



the Lothian Cycle Campaign

WHEN TO SLEEP!!

- **About Spokes** *[hopefully interesting]*
- **Activities** *[least interesting??]*
- **Techniques** *[could be interesting?]*
- **Example – Edinburgh** *[interesting]*
- **Example – Scotland** *[interesting]*
- **Final thoughts** *[may be useful ??]*



- **a voluntary organisation** *seeking*
- **better conditions for everyday cycle use** [we aren't interested in sport]
- **lobbying...**
- **locally** [mainly Edinburgh & Lothians]
- *and* **nationally** [Scotland]

WHEN WAS SPOKES CREATED?



1

10

100

1,000

10,000

100,000

1,000,000

SPOKES BULLETIN

No.1 & No.100. Now 12,000 of every Spokes Bulletin.

SPOKES

THE LOTHIAN CYCLE CAMPAIGN
2A Ainslie Place, Edinburgh EH3 6AR
Tel. 225 7752

BIKE ELECTION REPORT

Cycling has been neglected by Council policies too long. Motor traffic has increased to such an extent that many people who would cycle now feel that the roads are too dangerous. Whilst millions of pounds have been spent on planning and providing for cars, nothing at all has been done to encourage what is the healthiest, most efficient and safest method of personal transport, apart from walking.

The 1977 Council report on transport (the "TPP" report) didn't have ONE WORD about cycling. A letter to SPOKES from the Highways Department in 1977 stated "pressure of other work in the formulation of major transport policy has precluded any action so far."

On May 2nd elections are being held for Lothian Regional Council. SPOKES is putting the case for cyclists to all candidates and parties. And SPOKES is putting their policies to you. DON'T LEAVE IT THERE!

WHAT YOU CAN DO

- Use your bike
- Write to the papers
- Write to and visit your councillors (Council Chambers, George IV Bridge)
- Contact SPOKES for leaflets, stickers, posters
- Join one of the SPOKES working groups or help set up a new one
- Send us a donation and ask to be informed of forthcoming activities



SPOKES OBJECTIVES

1. To encourage cycling and to publicise its benefits for the community and for individuals.
2. To ensure that council policies actively encourage cycling and make full provision for it, as part of an overall transport strategy through which all members of the public can enjoy cheap, safe and efficient travel for work and leisure.

ELECTION FORUM

A public meeting will be held at which speakers from the 4 political parties will state their policies and answer questions.

DATE — Thursday April 20th
TIME — 7.30 p.m.

PLACE — Riddle's Court, Lawnmarket (up from George IV Bridge)

From our meetings so far it appears that many councillors have never before considered the needs of cyclists, and do not believe that there is a large demand for better cycling facilities. But they are willing to learn. THIS IS OUR CHANCE TO EDUCATE THEM. TAKE IT!

SPOKES MEETINGS

General Meetings are held fortnightly (April 10th, 24th, etc.) at 7.30 p.m. at 2A Ainslie Place. Meetings of working groups are arranged by the members.

MECHANICAL PROBLEMS?

Bring your bike to the COMMUNITY BICYCLE WORKSHOP. Open every Sunday 7 p.m. to 9 p.m. at 27 Drummond Street. We will provide help and tools COMPLETELY FREE.

KEEP THIS LEAFLET

- Use it to write to the papers.
- Use it to question your council candidates at their election meetings.
- Use it to remind your councillors when elected.

SPOKES

Bulletin 100 Summer 2008

SPOKES, The Lothian Cycle Campaign, St Martins Church, 232 Dalry Road, Edinburgh EH11 2KG ☎ 0113 312 2114
This is a postal address / answerphone - SPOKES is a voluntary body with no staff www.spokes.org.uk spokes@spokes.org.uk

MOUND VICTORY

Cyclists, pedestrians and buses will all benefit from a great political achievement by Spokes, along with Cllr Steve Burgess and many concerned individuals.

After a long struggle councillors picked up their courage, rejected the official recommendation, and agreed to ban car parking on the Mound at all times. While this is not the most vital cycling issue in the city, we hope it is a sign that councillors are at last willing to take cycling more seriously. And that the Lib Dems - largest party on the Council - are serious about their manifesto promise of a 'model cycle-friendly and walking-friendly city' [Spokes 97 p5].



The Mound as the Council wanted to keep it - bus stops blocked, cyclists squeezed, pedestrians pressurised.

How we won the Battle of the Mound - see page 5



The Mound without parking - cyclist safety, walkers' well-being, even no more jammed bus lanes!! Following this heart-searching within the ruling parties on the council, Spokes was invited by several councillors to discuss their case for real priority to active travel - walking and cycling - in the city. We especially thank Cllr Tim McKay [Libdem] for his initiative on this. With the huge problems of climate change, energy security, congestion and obesity it truly makes sense! Please urge your councillors to press for action - see page 4 for our ideas.

Help SPOKES, other cyclists, and yourself by writing to your MSP, MP, councillor and the press every so often. See back page for contacts. Ask your MSP / MP to raise your questions with the relevant minister. Send us the results!!

SCOTTISH FUNDING FALLS

Experts are calling for 10% of transport funds to go to active travel [p3] - but our research shows Scottish cycle spending below 1% - and falling in the new government's first budget year. Spending rises in some areas but other losses outweigh this, the main factor being a 13m cut for Strathclyde. Our figures are estimates, but the picture is clear unless the SNP finds new money - like the Lab/Lib government did in 06/07 when we showed an impending fall [Spokes 93 p3]. Meanwhile trunk road money rises by over £50m to £9.7m, and Forth Bridge toll abolition costs £25m [Spending Review].

Scottish £m	04/05	05/06	06/07	07/08	08/09
cycle spending*	11.9	11.5	18.3	19.4	17.0
total transport†	1329	1488	2248	2331	2258
% for cycling	0.90%	0.77%	0.84%	0.83%	0.75%

* Our estimates [Spokes 96 p5, and earlier]. † See page 7. (07/08 & 08/09 not comparable, due to government restructuring - local government not included, as 08/09 total may be higher and % lower. ‡ Figures differ from Spokes 93 as 'cost of capital' now included.

SPOKES BULLETIN No.100

See p3 for our online and offline celebratory exhibitions!

BIKES AGAIN 1 IN 5

Our May count is yet another wake-up call to the council and Scottish Government to get serious about bike use.

Even in bike-hostile Lothian, road use city-bound vehicle in every five is a bike in the 8-9am rush hour [p8]. But the 157 city-bound cyclists, and 169 buses and commercial vehicles, were clocked by 497 private cars. And 75% of those cars have just one person - along with a tonne of metal.

Edinburgh compares itself to Copenhagen - so let's invite Mayor Ritt Bjerregaard. Despite a heavy hike in use (thanks to serious investment) she has grown the budget more, and says "Giving cars priority is a thing of the past - from now on cycling will be taken even more seriously" [Spokes 98 p9]. What on earth would she say of Lothian Road?

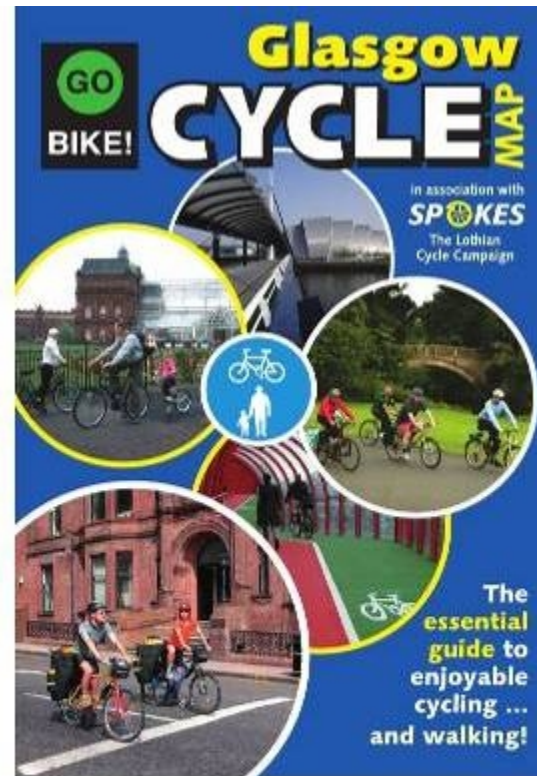
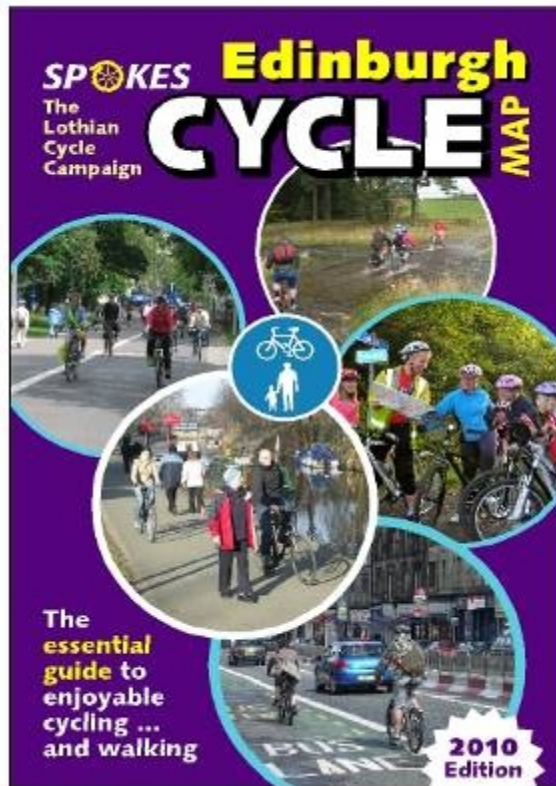
[Source: data, p8 and www.spokes.org.uk/downloads/technical].

WHAT THEY SAY ABOUT SPOKES

- * New resident: Your wonderful Edinburgh cycling and walking map has immeasurably improved my life in the city...
- * Scottish council cycle officer: It's very grateful for your existence - an example of cycling group best practice...
- * Member's comment on renewal form: Keep up the excellent work!... The way you engage with politicians and bureaucrats rather than just criticising and complaining... And our special thanks to you if you write to councillors, MSPs, etc. We'd achieve a lot less without you!!

SPOKES MAPS

100,000 sold!!



1

10

100

1,000

10,000

100,000

1,000,000

A FEW THINGS SPOKES DOES

- Ongoing contact/lobbying councillors/officers
- Council quarterly cycle forum
- Tram/cycling liaison group
- Publish 5 cycle maps
- Annual survey of Scottish cycling investment
- CCF-funded project on cycle storage for tenements
- Annual competition e.g. 'My favourite cycle facility'
- Work with organisations like Sustrans, Transform, Forthright Alliance, Stop Climate Chaos, ...
- Factsheets e.g. how to claim after a tramline crash
- Website as reference source, not just a blog
- Recreational rides
- Stalls at events
- *I could continue ...*

SOME TECHNIQUES WE USE

- ***Be active praising the good:*** don't just criticise the bad. Let the council/ govt see you're useful!!
- ***Seize & seek opportunities:*** [e.g. planning applications; presence of top people] ... i.e. don't solely concentrate on predetermined campaigns
- ***Use time well:*** e.g. designing a map or bulletin is fun but useless unless you also distribute widely!!
- ***Encourage members to lobby as individuals:*** notify them who to contact, when, and about what – let politicians/officials feel a wide constituency
- ***Consistent pressure:*** results can take time.

SOME TECHNIQUES WE USE

- ***Be active praising the good:*** don't just criticise the bad. Let the council/ govt see you're useful!!
- ***Seize & seek opportunities:*** [e.g. planning applications; presence of top people] ... i.e. don't solely concentrate on predetermined campaigns
- ***Use time well:*** e.g. designing a map or bulletin is fun but useless unless you also distribute widely!!

CAN YOU SPOT THEM TODAY?

Spokes <-> Edinburgh Council

Generally constructive relationship:

We praise the good as well as highlighting problems - so our ideas are respected

Example contacts:

- **Quarterly Cycle Forum** - chaired by Transport Convener
- **Active Travel Action Plan** - Spokes was on the Board producing the plan
- Many **smaller contacts** - formal & informal

Edinburgh – the Mound

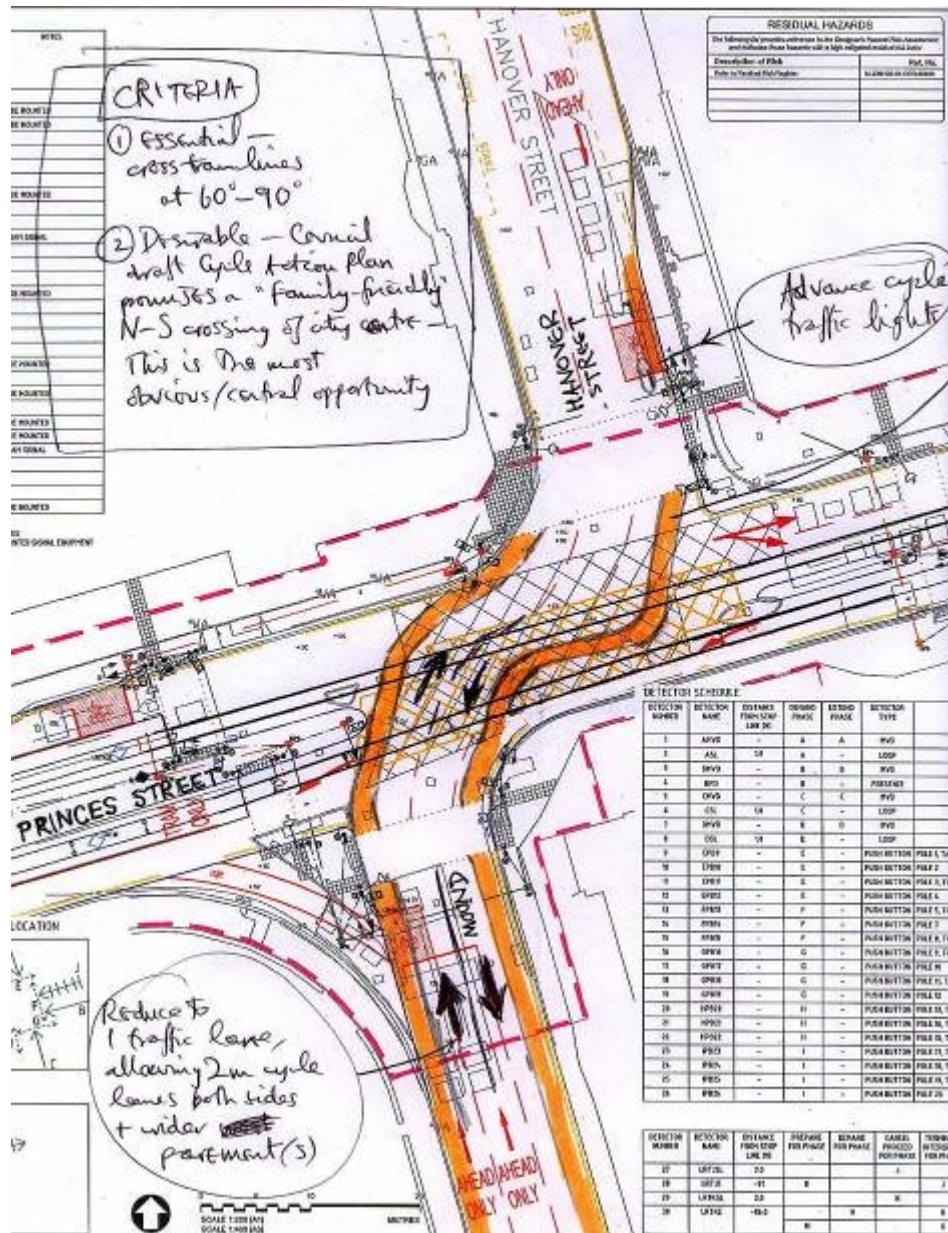


*A great Edinburgh street
and a great bike facility!!*

- **Cyclists** don't have to stop and start behind steep uphill traffic [often lorries & buses]
- **Pedestrians/tourists** now further from cars and lorries - can enjoy the street
- **Note peak-only restriction** - later lobbying jointly with Lothian Buses achieved a 24-hour parking ban

Crossing Princes Street at the Mound

- Vital N-S crossing - and part of ATAP 'family network'
- *Layout makes it almost impossible to cross tramlines from N to S at safe 60deg.*
- Crashes Feb & Oct (1 injury)
- Spokes proposal (shown) rejected as only one traffic lane each way [though Mound was *totally closed* in 2009]
- Discussions for 2 years - no other obvious solution

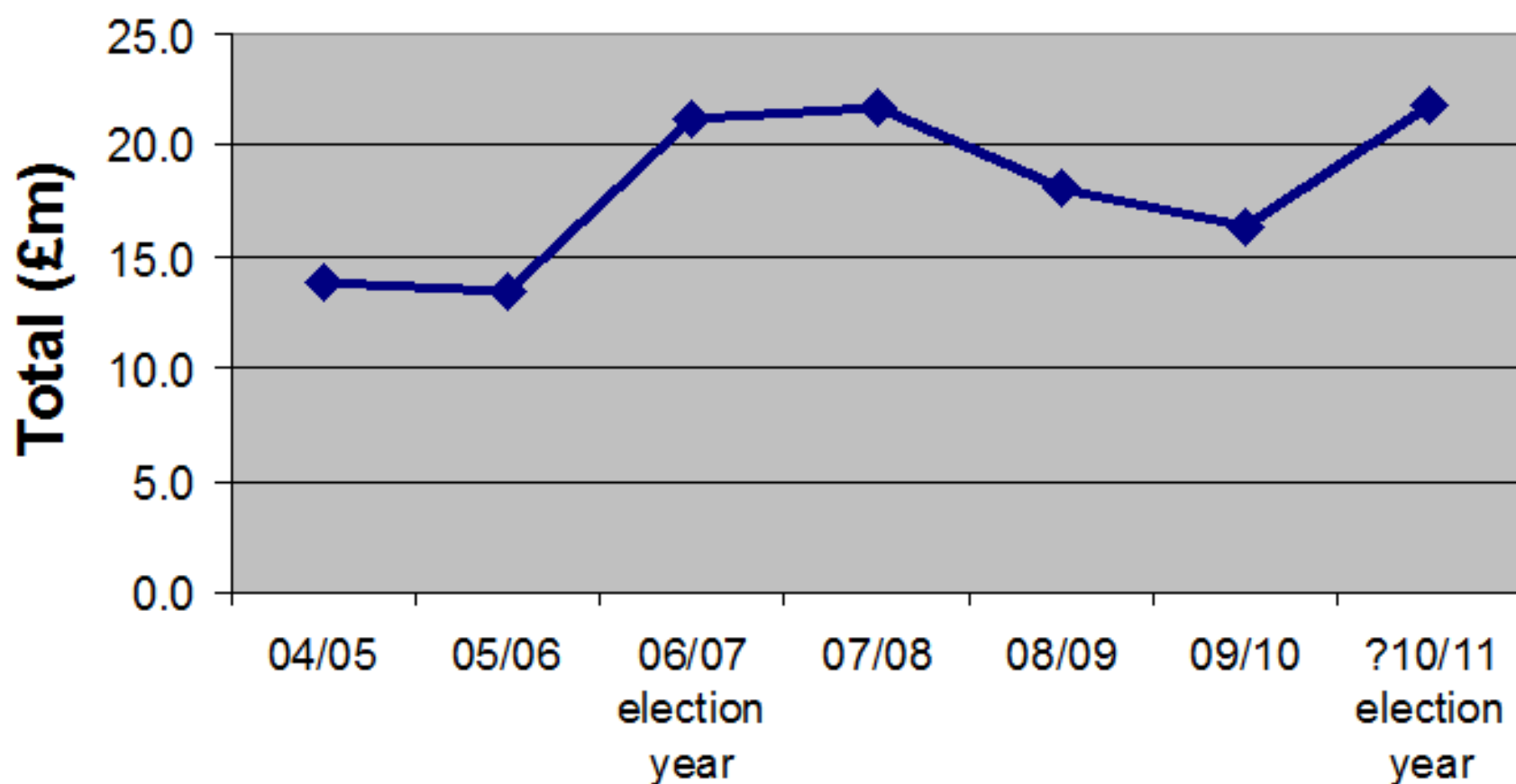


Spokes Annual Survey of Scottish cycle funding from all main sources

“the most detailed and comprehensive overview of annual public sector cycle expenditure”

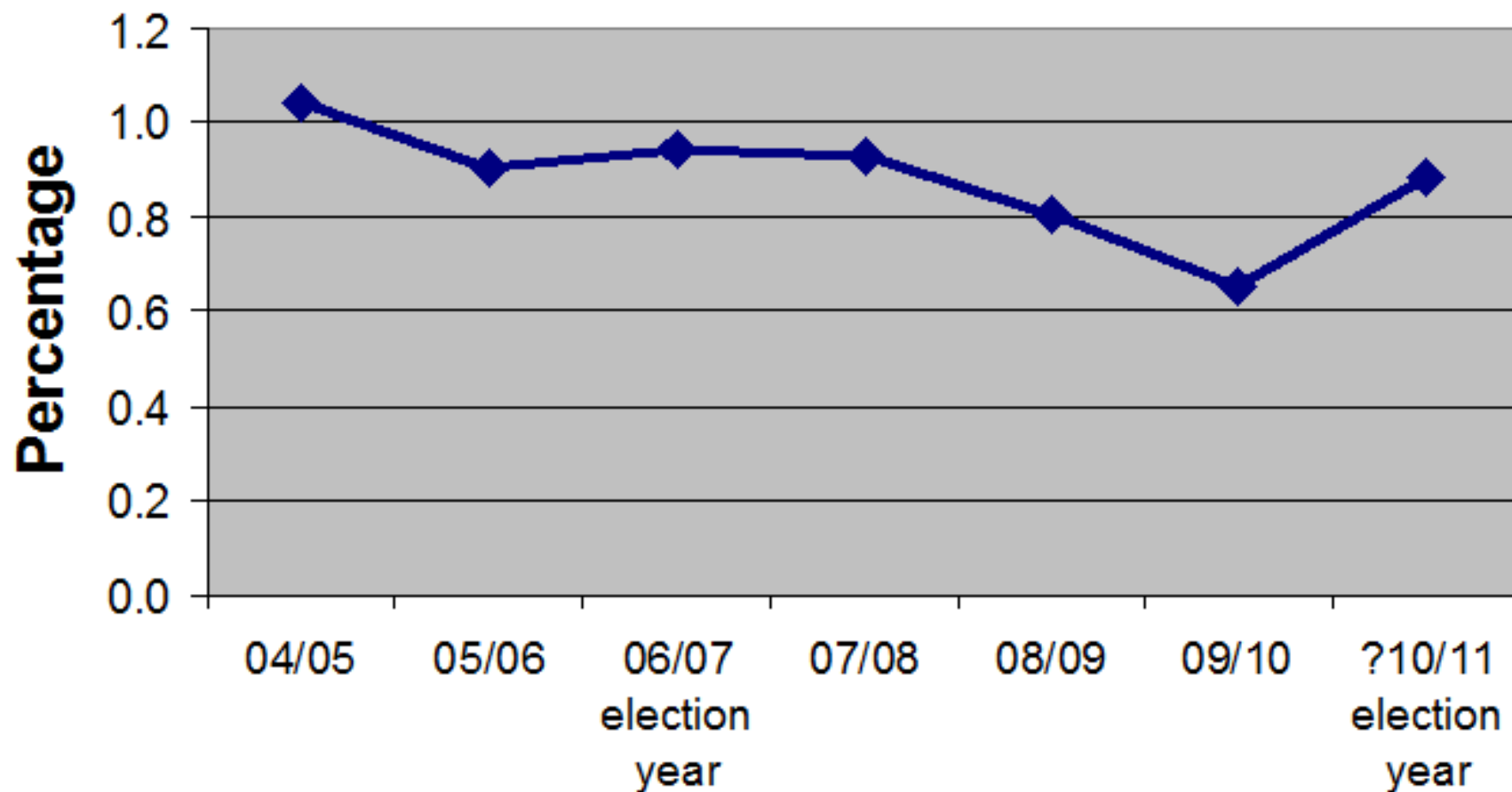
**Scottish Parliament Information Centre [SPICe]
Briefing 10/62 – Cycling in Scotland**

Scottish Cycling investment - total of all main sources [*cash terms*]

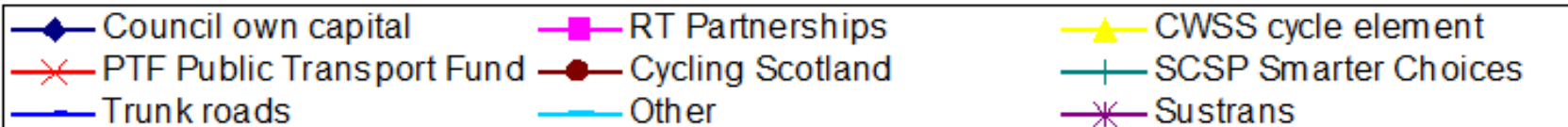
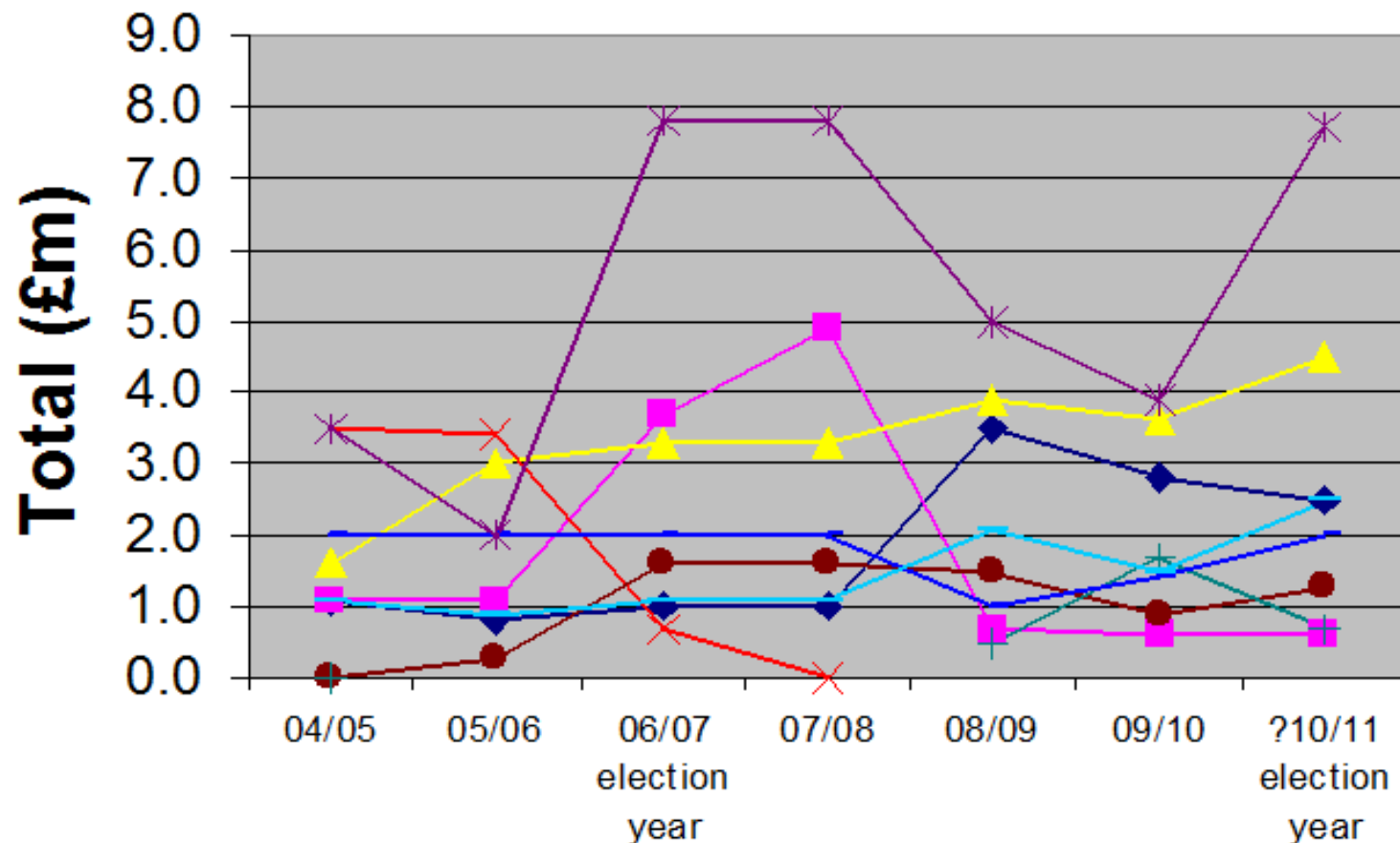


This year's data is provisional so is labelled ?10/11

Scottish Cycling investment - total as % of SG transport budget



Scottish Cycling investment - all main sources [cash terms]

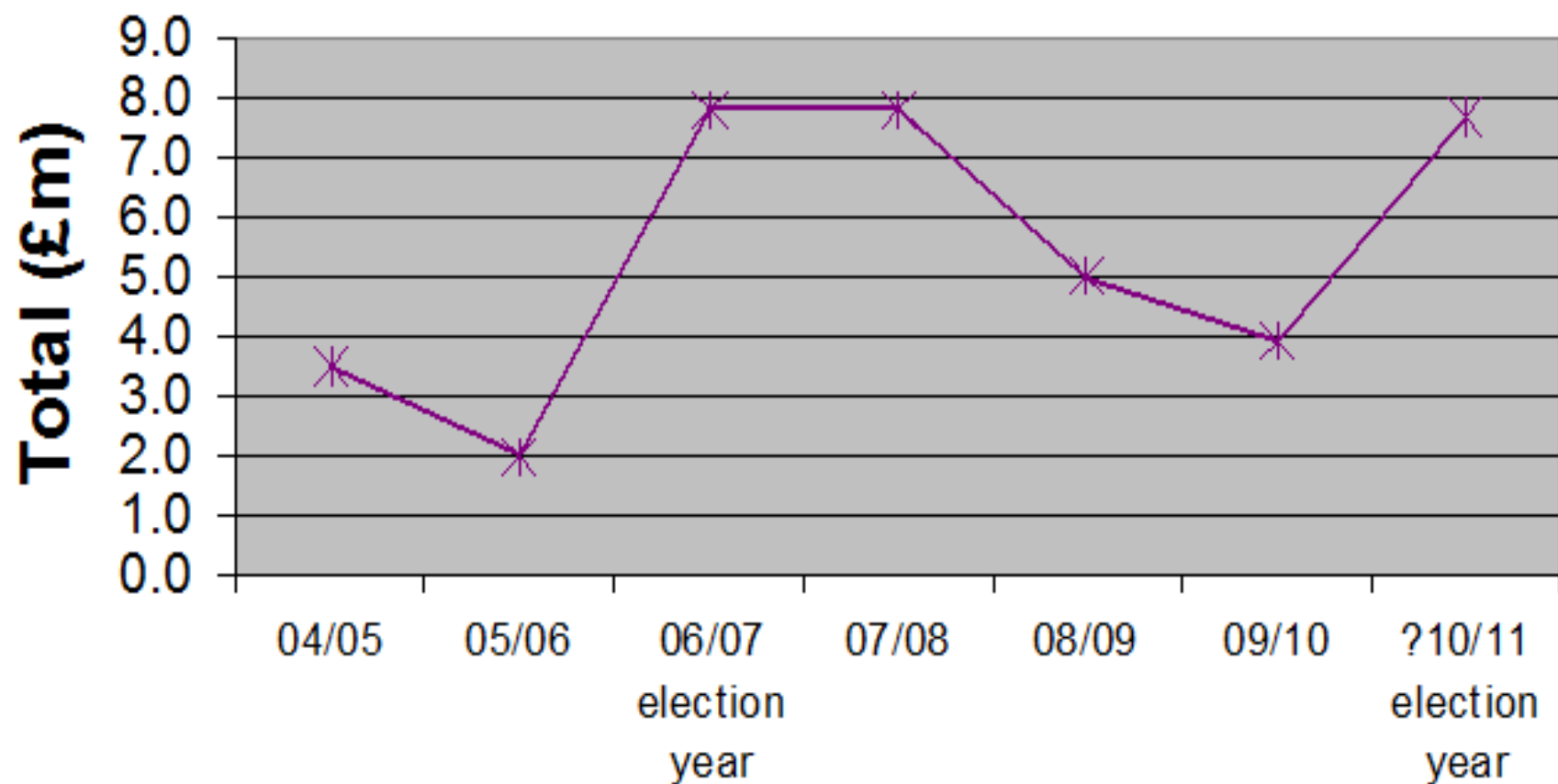


**Sustrans investment with
local authorities and others**

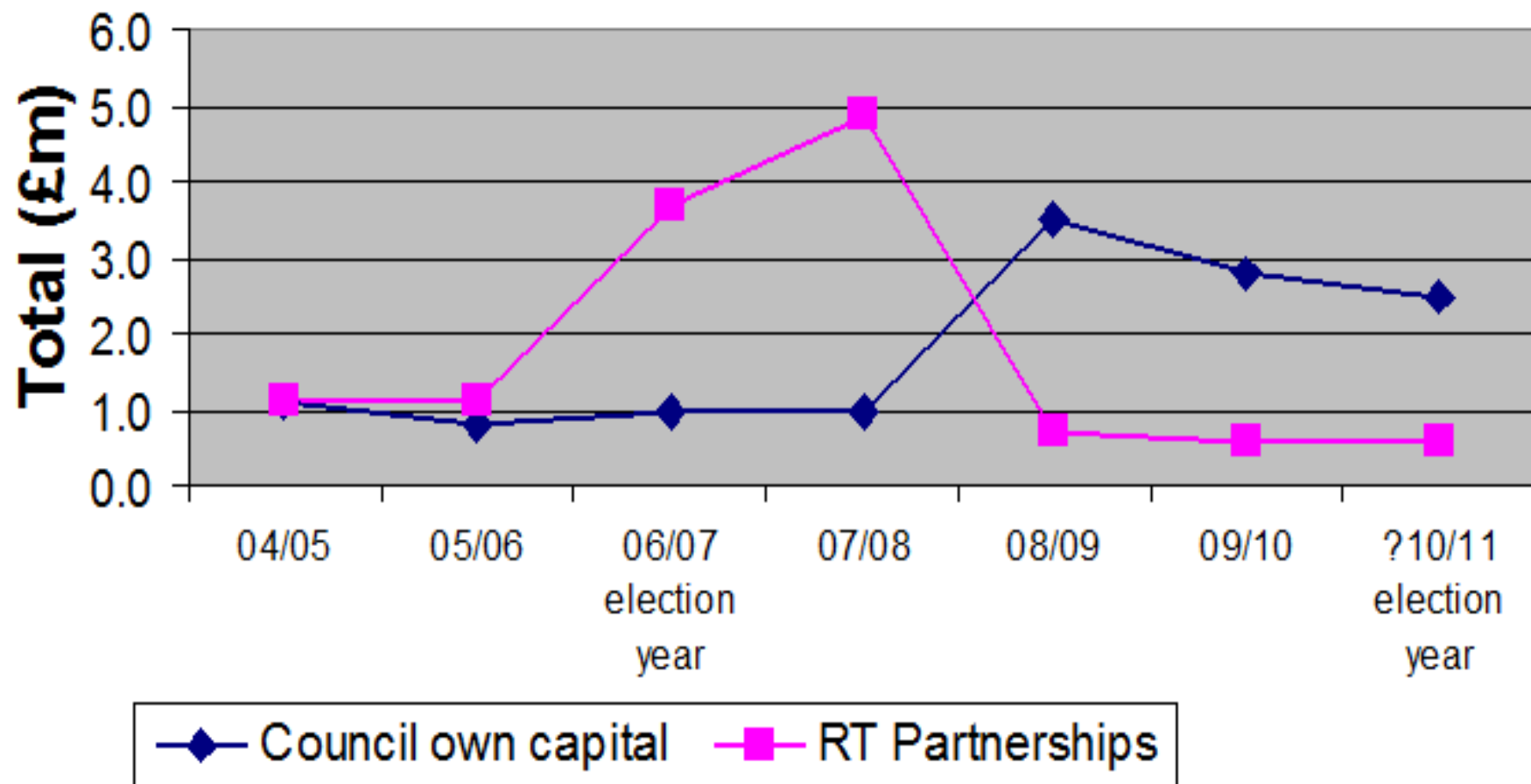
***“High standard, on
budget and in tight
timescales”***

**Nicol Stephen MSP when he was
Scottish Transport Minister**

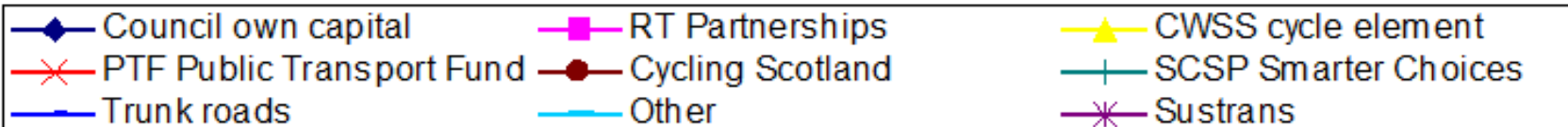
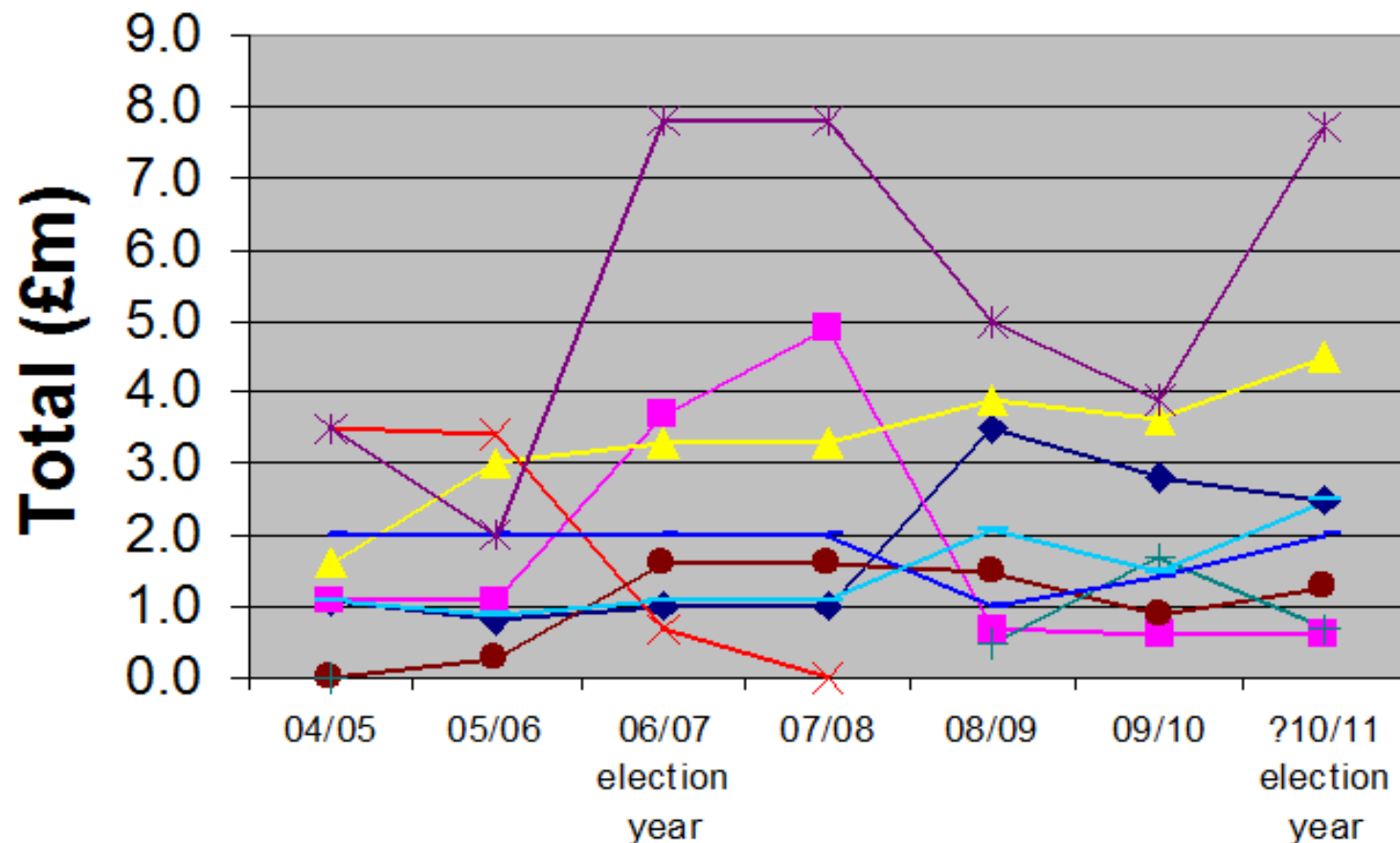
Scottish Cycling investment - *the Sustrans switchback*



Scottish Cycling investment - *example of hidden impacts*



Scottish Cycling investment - all main sources [cash terms]



FINAL THOUGHTS .. 1

Only *dedicated funding* brings serious local cycle investment

Biggest investment sources/types so far:

- Sustrans – *matched* funding to councils etc
- Public Transport Fund – *bidding* fund
- RTPs – *regional* sustainable transport funds
- CWSS – *automatic* cycle/walk funds

Most disappointing source for many years:

- *Local authority discretionary capital*

FINAL THOUGHTS .. 1 (ctd)

Only dedicated funding brings serious local cycle investment

Spokes 2011/12 budget proposal:

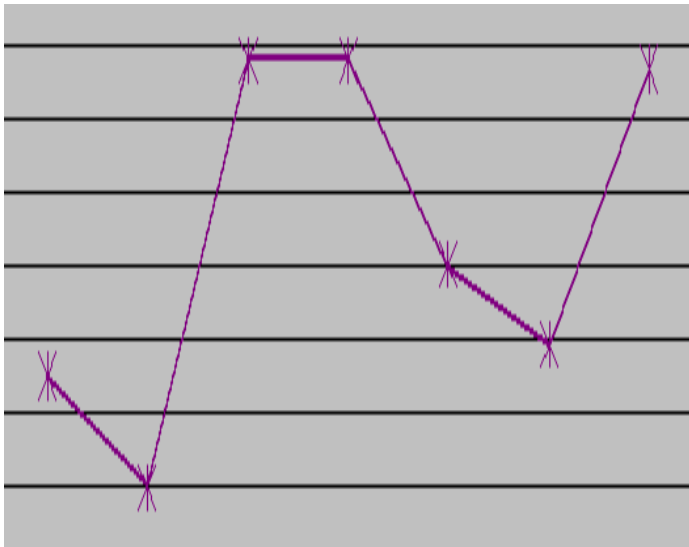
- **£10m council fund** - modified CWSS
- **£10m Sustrans/CS** – approx as 2010/11
- **£30m active travel bidding fund** – open to councils, RTPs, BW, rail, any organisation

TOTAL: 2% of current transport budget
A modest suggestion given the 10% target!

FINAL THOUGHTS .. 2

Politicians become more sensitive to pressure as elections approach
Remember the Sustrans switchback?

Easy to cut, easy to restore – ideal for politicians!



Lib/Lab 2005 mid-term CUT

- > **Pressure:** Spokes survey / Lib Dem conference motion
- > **2006 massive funding RISE**

SNP 2008/9 mid-term CUT

- > **Pressure:** Spokes survey / SP TIE cttee / SDC / CAPS
- > **2010 funding UP AGAIN!!**

FINAL THOUGHTS .. 3

Top *politicians* and *officers* can have a big effect – by detailed attention and setting priorities. It's often the person not the party.

Examples:

- **Edinburgh Council under Lib Dems** – “A Model Cycle Friendly City”? – no then yes!
- **Scotland under Labour** – huge difference according to who was transport minister.

FINAL THOUGHTS .. 4

Campaign groups can *identify* and *highlight* issues that are significant but below the radar

Spokes examples:

- **Local** – domestic bike storage problems are suppressing Edinburgh bike use
- **National** – Public Transport Fund and RTPs were main sources of cycling investment – removing their funds meant slashing cycling



1,000,000 regular cyclists – a fantasy?

1
10
100
1,000
10,000
100,000
1,000,000

There are ~150,000 bikes in Edinburgh ..

There are ~1,500,000 bikes in Scotland ..

***Let's create the safe and
welcoming roads and paths
that will bring them out!!***



the Lothian Cycle Campaign



the Lothian Cycle Campaign