

Edinburgh ACTIVE TRAVEL ACTION PLAN – making Edinburgh a cycling city

COUNCILLOR GORDON MACKENZIE

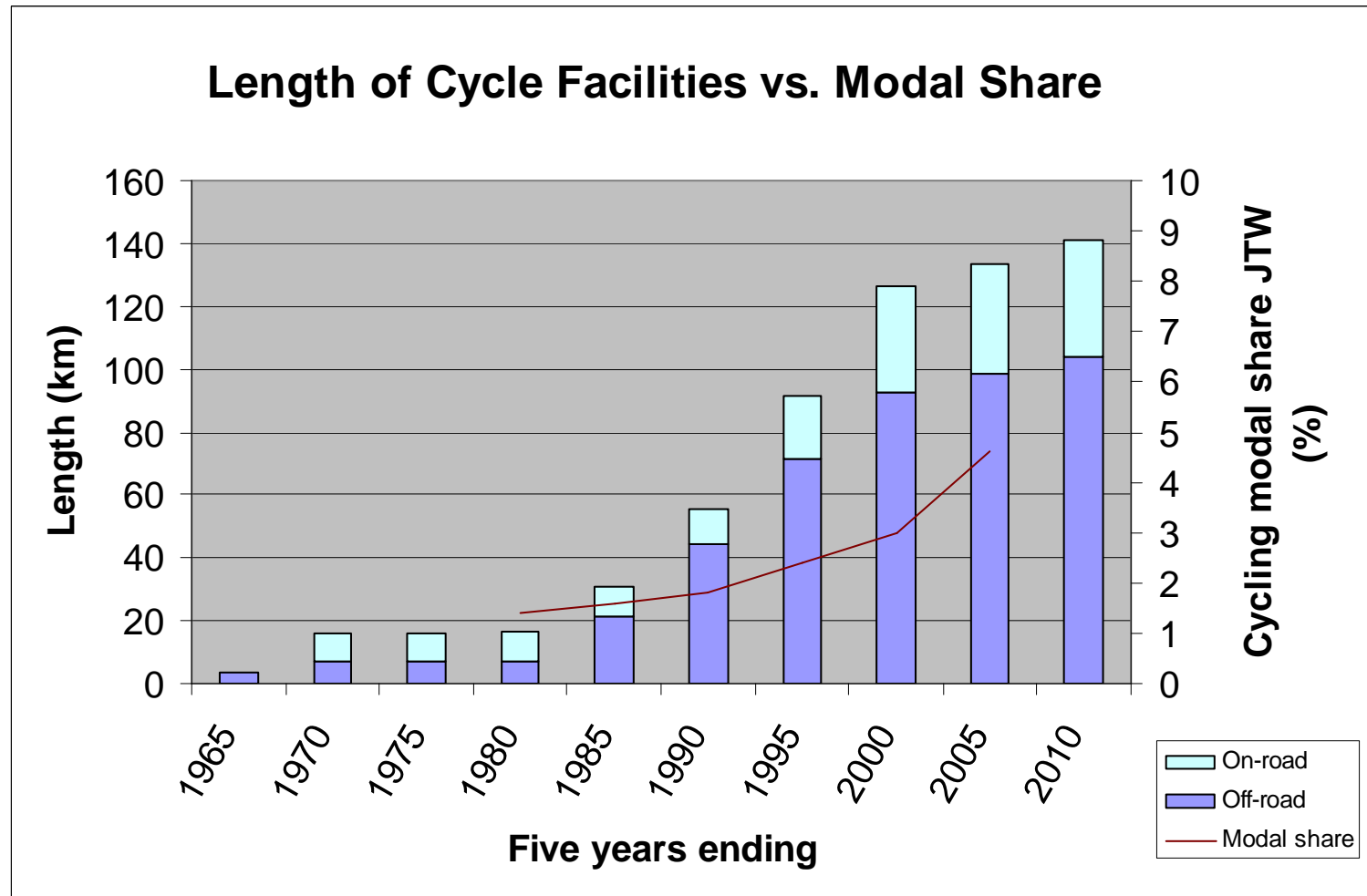
Convenor: Transport, Infrastructure and Environment – City of Edinburgh
Council



• EDINBURGH •
YOUR COUNCIL – YOUR CITY

Active Travel Action Plan

Cycle use vs. cycle facilities



Why Active Travel?

- Healthy
- Environmentally friendly
- Affordable
- Efficient (congestion reduction) and cost effective
- Social benefits

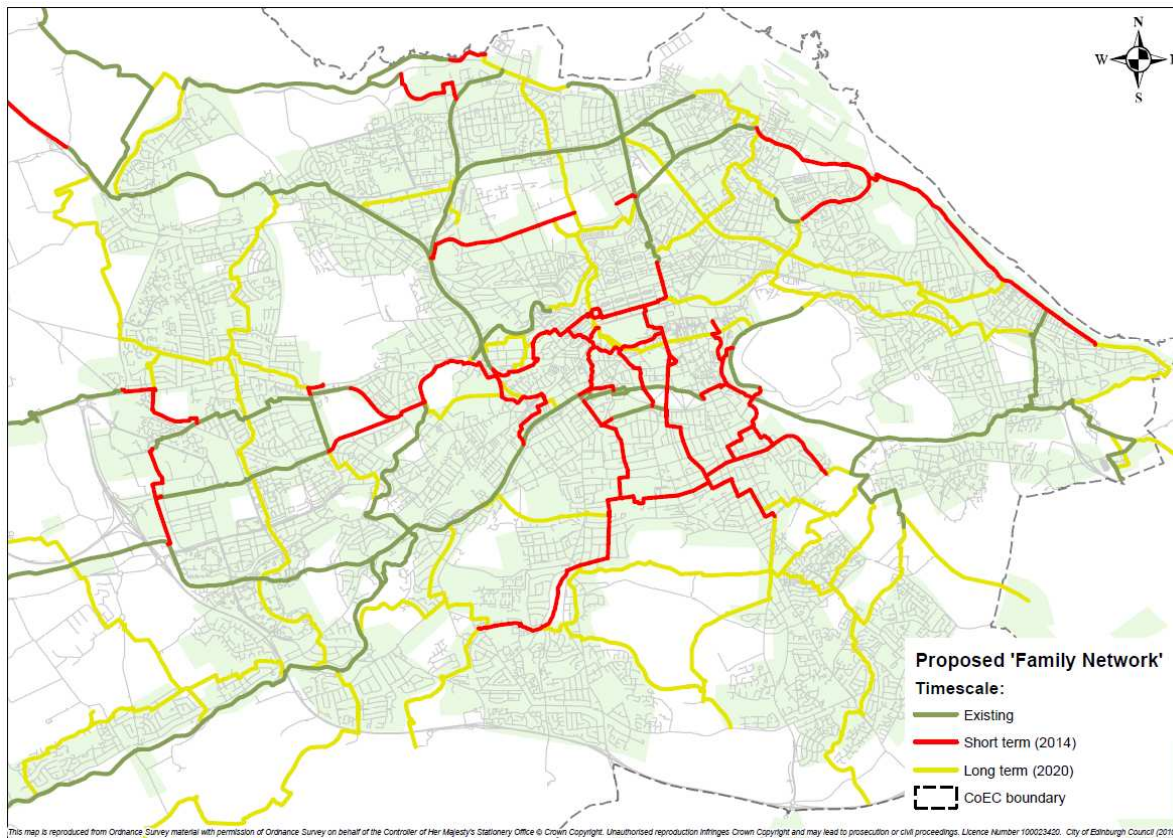
What is the ATAP?

- Cycling and Walking (focus of today is cycling)
- Focus on short to medium term
- Action –oriented – not another policy document
- Target areas of greatest potential
- ‘soft’ as well as ‘hard’ measures

Actions Summary

- Family network
- Cycle Friendly city programme
- Parking
- Maintenance
- Promotion
- Cycling to School
- Safety
- BikeShare

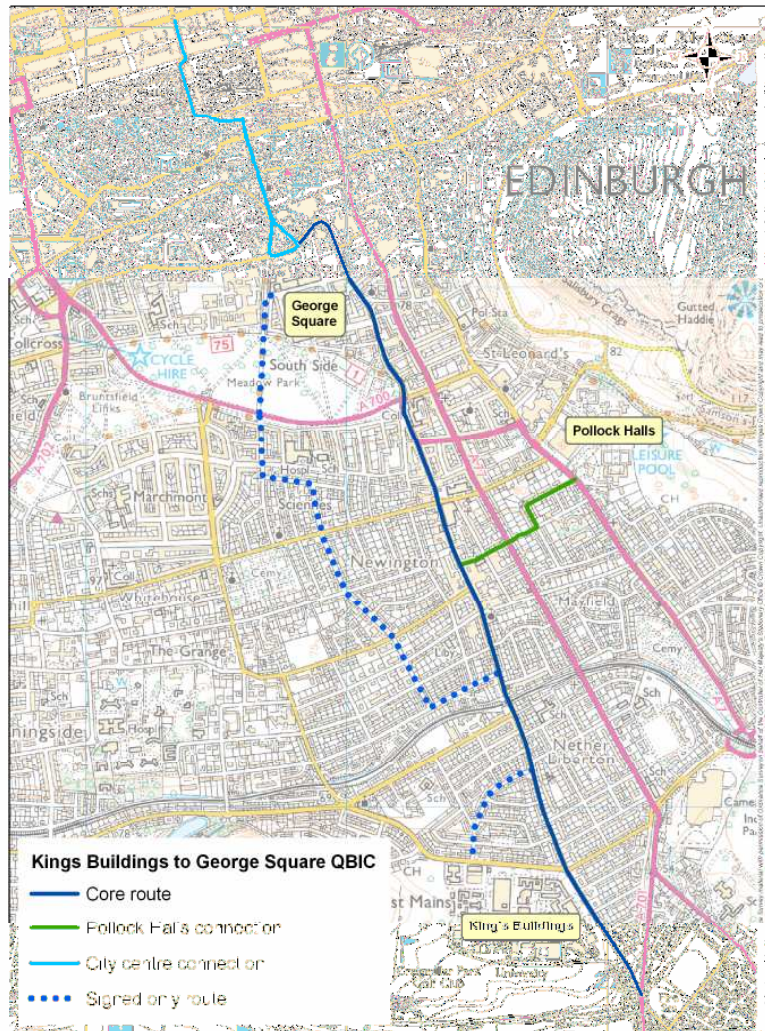
Actions - The 'family' network



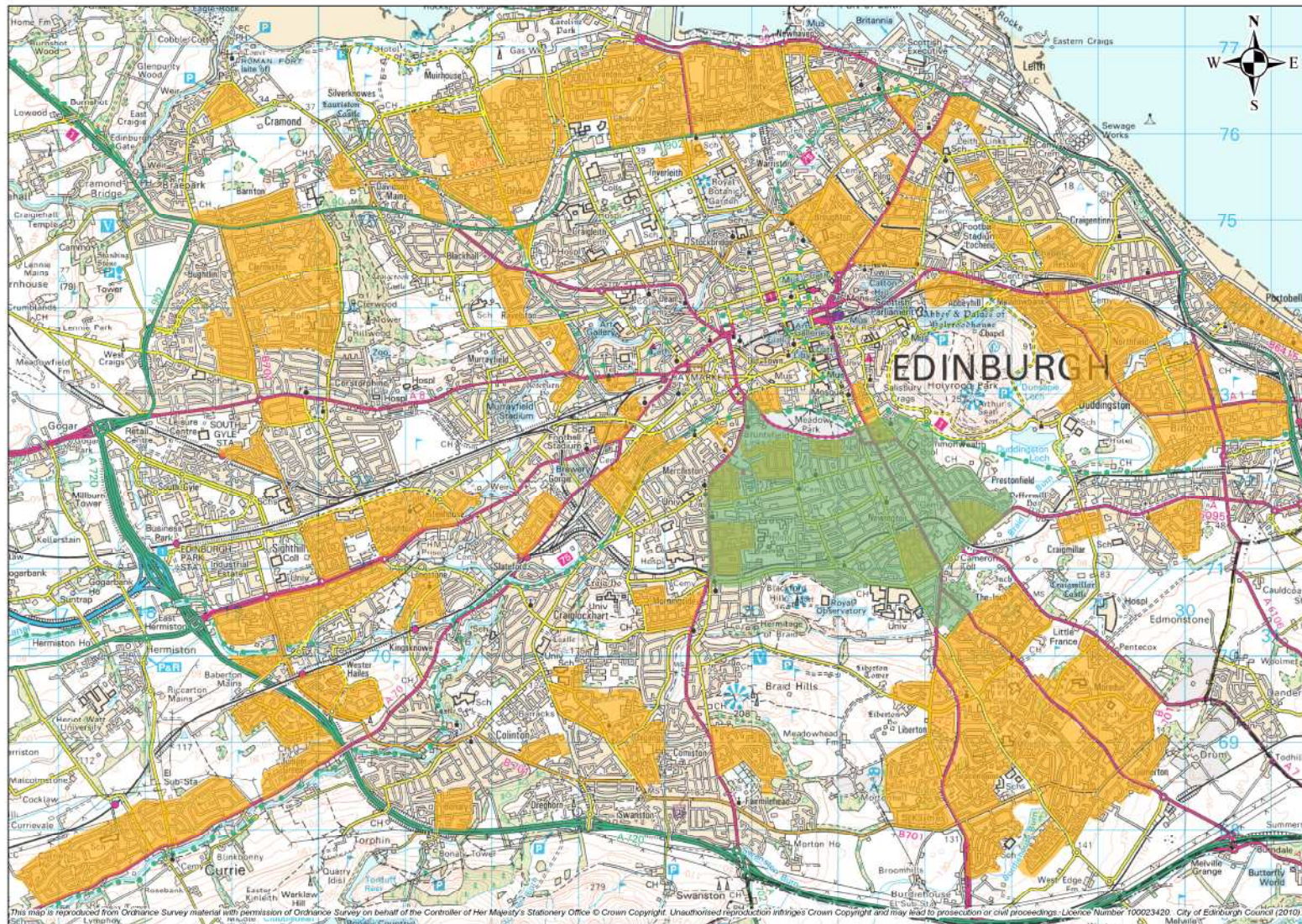
- Less confident cyclists
- National cycle network
- Early priority = filling gaps

Actions: Cycle friendly City

- On road
- Main road corridors
- Parking restrictions in cycle lanes
- Crossing to link quieter road routes
- Advanced Stop Lines
- One way exemptions
- Expansion of 20mph zones



20mph zones with proposed pilot limit area



Actions – Parking

- On-street provision - city centre and district shopping centres
- Transport interchanges
- New development – parking standards
- Existing residential - the biggest challenge



Actions - Promotion

- Signing
- Cycle maps and leaflets
- Web-based initiatives
- Working with partners (the Bike Station, employers, Universities, NHS)
- Branding of routes?
- Support of cycling events



Actions - Cycling to School

- Continue School Travel Plans and Safe Routes to School
- Encouragement of School Councils to take up pupil cycle training
- 'I Bike' project



Photos courtesy of Chris Hill



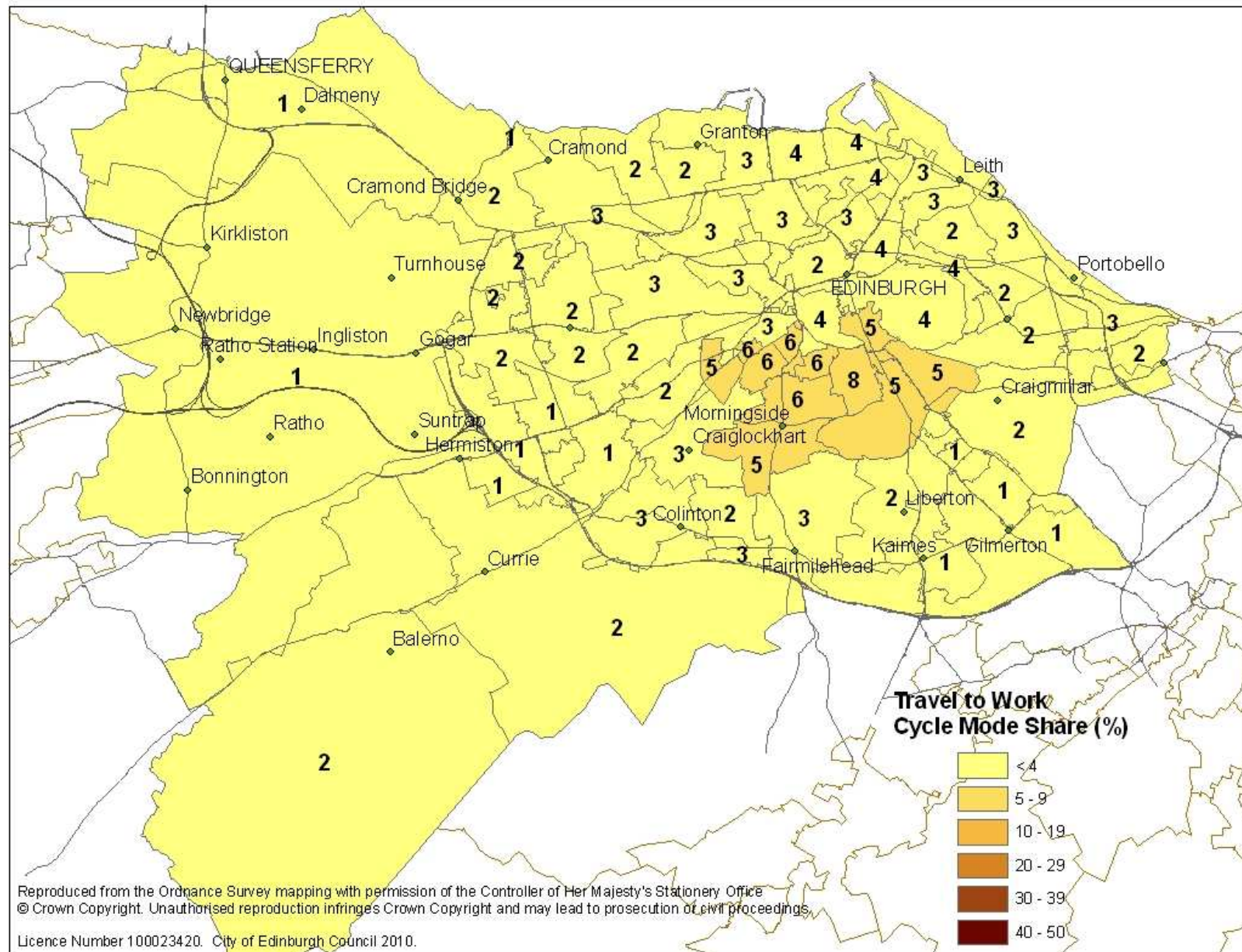
• EDINBURGH •
YOUR COUNCIL - YOUR CITY

Active Travel Action Plan

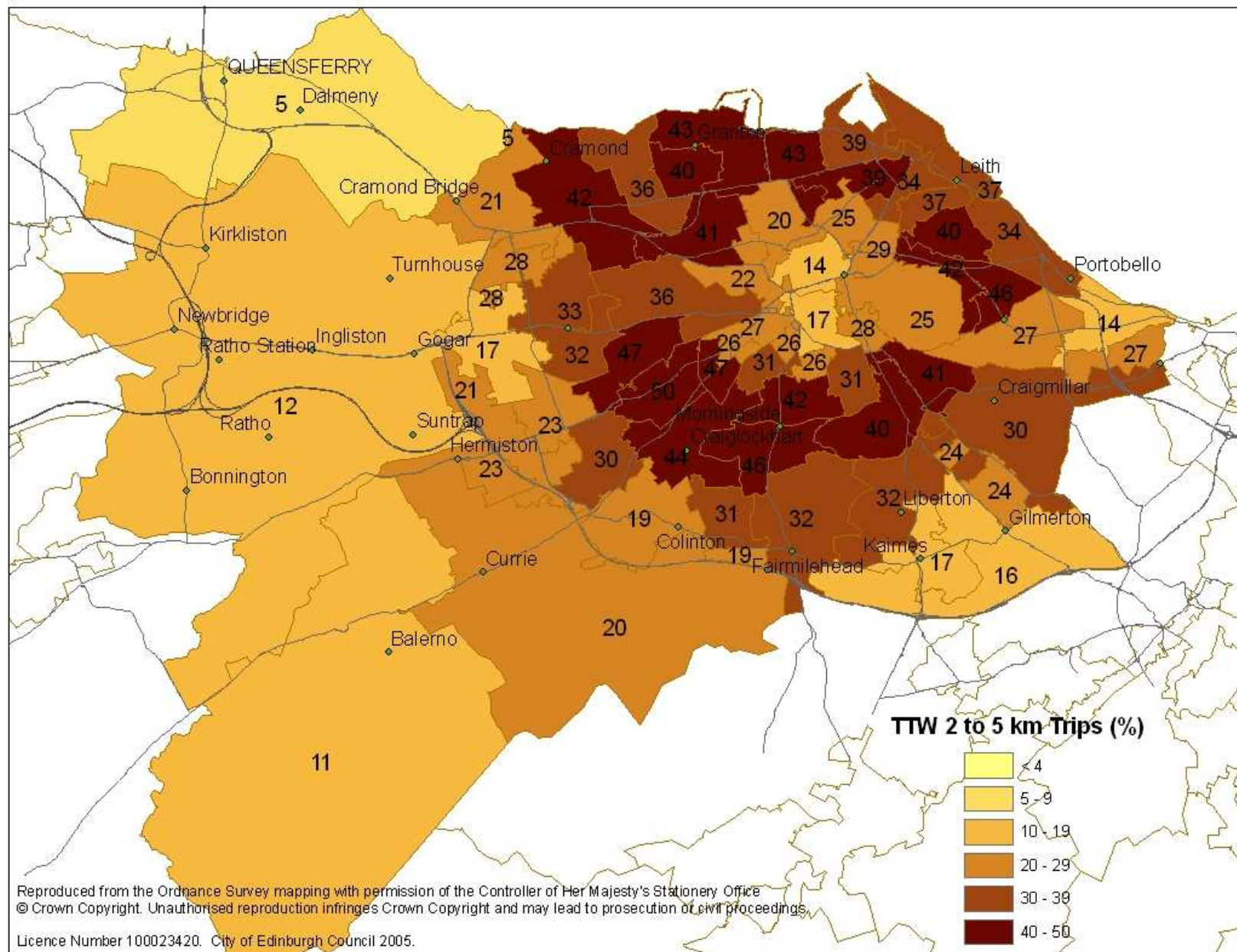
Actions - Safety

- Road Safety Plan
- Analysis of cycle collision data to identify patterns (e.g. locations, circumstances of collision, etc)
- Working group to consider best way to tackle issues identified
- Safety in numbers approach
- Reduce poor safety perception of cycling

2001 Cycling Mode Share to Work



Potential Cycling Mode Share?



Thank you for listening!



• EDINBURGH •
YOUR COUNCIL – YOUR CITY

Active Travel Action Plan