



Autumn Public Meeting
Cycling for All ... Diversity Rules
Thursday 15 November 2018

Meeting tweeting @SpokesLothian – hashtag #SpokesMtg

Thank you

West Lothian Bike Library

<https://www.facebook.com/wlbikelibrary/>
<https://www.wlbikelibrary.co.uk/>

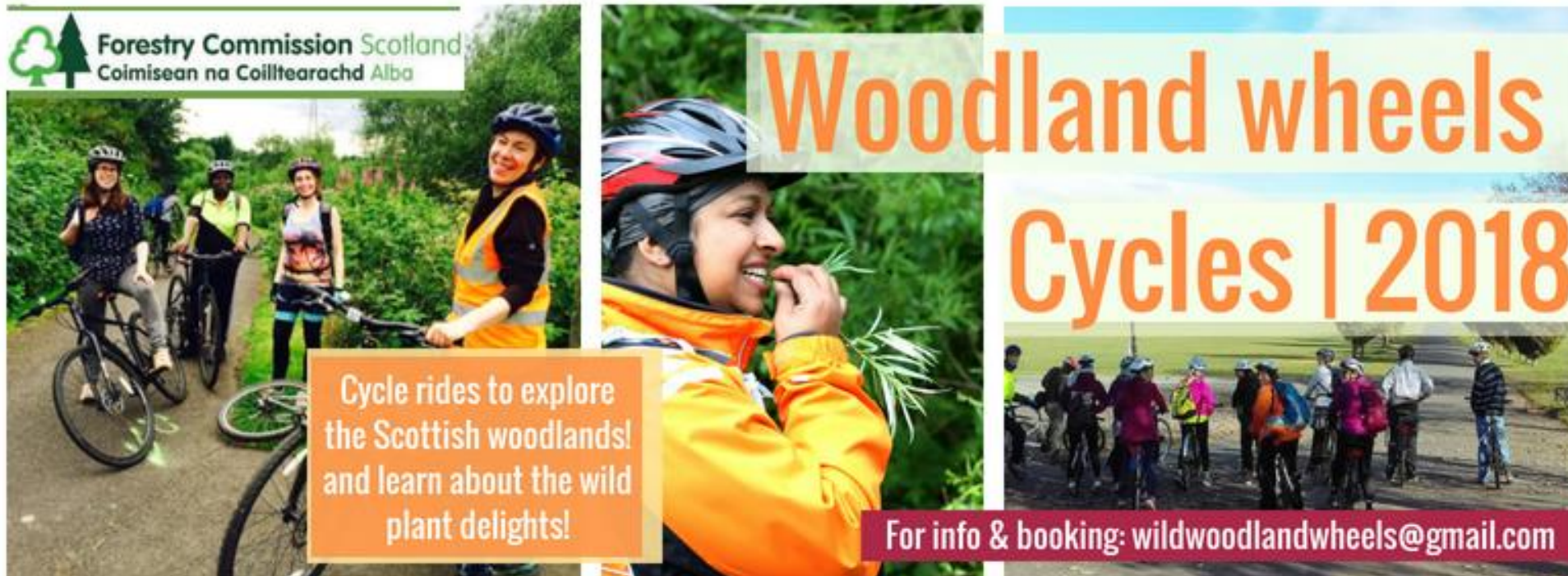


Thank you



Woodland Wheels

<https://www.facebook.com/WoodlandWheel/>

A promotional graphic for "Woodland wheels Cycles | 2018". It features a collage of images: a group of cyclists on a path, a close-up of a smiling cyclist in a yellow jacket, and a group of cyclists gathered on a path. Text elements include the Forestry Commission Scotland logo, the event title "Woodland wheels Cycles | 2018", a description of the rides, and a contact email address.

Forestry Commission Scotland
Coimisean na Coilltearachd Alba

Woodland wheels
Cycles | 2018

Cycle rides to explore
the Scottish woodlands!
and learn about the wild
plant delights!

For info & booking: wildwoodlandwheels@gmail.com

Thank you



Cllr Mark Brown
and
Horatio the e-bike



Thank you

Ageing Well

<https://www.edinburghleisure.co.uk/activities/bike-active/ageing-well>



Thank you

ELREC (Edinburgh and
Lothians Regional
Equality Council)

<http://www.elrec.org.uk/>

<https://www.facebook.com/ELREC>



Thank you

Bikes for Refugees



<https://www.facebook.com/BikesforRefugeesScotland/>

Thank you



All-Ability Cycling & VIE Velo

<https://www.cyclinguk.org/blog/davidglover/edinburgh-abc-first-riders>

https://twitter.com/Edinburgh_ABC https://twitter.com/vie_velo



Thank you
Knox Academy



<https://www.ka-net.org.uk/>

Thank you

Alison Johnstone MSP

<https://twitter.com/AlisonJohnstone>





Round Up of the Year

40th Anniversary



Spokes was founded in autumn 1977. We marked our 40th anniversary in autumn 2017.

We held a reception at the City Chambers attended by volunteers, Councillors and MSPs.

"Spokes led that charge, which was a lonely position when Spokes began ... but they were right," Adam McVey, Leader of Edinburgh Council.



40th Anniversary

For our anniversary we produced 3 videos and 6 exhibition boards. The boards show the present, past and future.



SPOKES

Spokes has been promoting cycling as everyday transport for forty years. Cycling is cheap, efficient, enjoyable, non-polluting and healthy.

Done by volunteers

Non-party-political

Encouraging cycling

Maps of Edinburgh, Midlothian, East and West Lothian, and Glasgow and valleys, at scale and in local shops. Edinburgh map now in 10th edition, sold over 170,000 copies.

30 community stalls available to hand out information and answer queries from the public.

Bikebreakfast every week since 1995. 250 free hot breakfasts to cyclists, 10 stalls, a 10 mile, security marking and supplies.

Spokes Factbooks about bike storage, advice for families, use of shared public, helmet facts, advice for drivers on taking care around cyclists, discounts on cycle rides, setting up a Spoke User Group at work.

Lobbying

Using social media to inform and influence the public and decision makers.

- Encouraging public, business and other cycling, walking
- Monitoring and commenting on plans for transport and building
- Bringing cyclist perspectives to committees
- Meeting libraries, councillors, MSPs and other decision makers
- Running infrastructure tours

Spokes helped establish **SUSTRAINS** Scotland and the **Edinburgh BikeStation** and supports other cycling organisations.

1200 members, 6000 Twitter and 1250 Facebook followers

Funded by donations and map sales

Campaigning

Spokes urges people to contact politicians to consider understanding of cycling needs and push for improvements.

Spokes Bulletin

- 3 times a year since 1977, 12,000 print-run
- Informs the public and decision makers about cycling issues and Spokes' activities
- 2000 envelopes delivered by 50+ volunteers by bike

Spokes' online website with current developments and extensive knowledge bank

- Spokes Facebook and Twitter
- Constantly updated with current news
- 14,000 tweets and a weekly FB reach of 4500

Summer Competitions generate ideas for campaigning

Gathering evidence

Traffic counts twice a year since 2006 in two locations recording private and commercial vehicles and bikes. Additional info serves to understand cyclists' journey better and build the case for an active place.

Cycling in schools

2 or 3 **Public meetings** annually to gather 100 people to hear of expert speakers, Spokes such as **Tackling Road Danger**, **Cycling and Health**, **Cycling for Learning**, and meetings before elections.

Monitoring funding for cycling and active travel at Council and national level

Photo: Mike and Rosie would like to thank everyone who helped us put this exhibit together, and... for their financial support. Visit our website at www.spokes.org.uk

1977 to 1986

"It appears that many councillors have never before considered the needs of cyclists, and do not believe that there is a large demand for better cycling facilities. But they are willing to learn."

— First Spokes Bulletin 1978

Spokes founded

Friends of the Earth held a meeting to decide how to grow cycle use in Edinburgh. At this time the Council had no cycle budget, there is no on-road cycle provision, cycling is forbidden in parks, shared railway lanes are derelict and cycle casualty rates are the highest in the city. A group is formed called Spokes.

First Spokes cycle count

25 Spokes supporters from 7:30-10:00am on May 10 and May 17 to count all formal junctions round the Meadows. Results: 706 and 1000 cycles.

Railways into cycle paths

Lothian Regional Council buys North Edinburgh-based railways from British Rail. Spokes sets up a new Railways group to press for early conversion to pedestrian and argues the Council to commission the number of Spokes. Mike Greenhow to produce a report.

Innocent Railway

Leslie Challen, Member of Scottish Parliament, opens the Innocent Railway for use as a railway and continues.

The Grimshaw Report

After Spokes' lobbying, John Grimshaw is appointed by the Scottish Office and Lothian Regional Council to report on potential opportunities, nationally and, in more detail, locally - the background of Scotland's Scotland.

John Grimshaw's **Scottish Railway Paths and Cycle Route** report is published and serves as a blueprint for later cycling developments.

Cycle team promised

Faced with chronic underfunding of the Council's cycle budget, Spokes persuades Lothian Labour Party to include a cycle team in its election promises.

Making progress

Spokes is regularly consulted by the Council. Cycle use begins to rise. Cycling now has a significant political profile in Edinburgh and the Lothians.

Bulletins

Spokes produces its first bulletin in 1978. It is now at issue 125.

Middle Meadow Walk

1978 - Cycling to the 10th mile, so no Meadows cycle route. Spokes campaigns for the new route including a major bike walk to enter the awareness of the Council's actions.

March 1982 - the Middle Meadow Walk

Cyclists cross on the shortest day of the year. It is at first experimental, then becomes permanent.

Building a path

1986 - Spokes obtains Council funding and permission to build the 10th Mile cycle path, with Spokes volunteers supported by John Grimshaw. A work of exceptionally hard graft follows.

The new path is opened by Cllr Mike and the Edinburgh North Lothian Highland Park Board. Part of the 10th mile from North Edinburgh Cycle Network from Dalry to Leith with a Green Space to Leith.

Rallies

During this decade Spokes holds and holds annual rallies in Princes Street and elsewhere, attended by 200-1000 demonstrators and by Councillors and MSPs. The rallies make the cycling issue visible and put pressure on the Council and Government.

Photo: Mike and Rosie would like to thank everyone who helped us put this exhibit together, and... for their financial support. Visit our website at www.spokes.org.uk

Looking forward to 2027

"Our air quality needs cycling, our congestion needs cycling, our citizens' physical and mental health needs cycling. In short, our city's general well-being needs cycling."

— Adam Murray, Edinburgh Council Leader 2007-9

Lothian Road

Edinburgh City Centre could look and feel quite different in ten years time. We envision that there will be better consideration for people, less traffic domination, less noise and cleaner air. Daytime deliveries will be controlled by cargo bikes and small electric vehicles. All public transport will be "green". There will be more space for cycling and more cycling facilities.

By 2027 we expect to see significant change from today with more secure parking bikes for everyday journeys for work, study, shopping and leisure. Post 2027, bike use will continue to grow - and Edinburgh's streets will have a reputation as a cycling friendly city.

Projected 2027 Cycling Network

City Centre Cycling in 2027

- New segregated routes into the centre (West to East linking Roseburn to Leith North to South linking The Meadows to George Street etc)
- Active Travel and public transport prioritised on Princes Street, The Meadows and several other City Centre streets
- Direct Routes Network completed, joining up popular destinations

Top ten for 2027

- Reduction in general motor traffic in the City Centre
- Large deliveries out of hours with local deliveries by cargo bikes.
- On Princes Street: Segregated cycling protection, wider footways, a shuttle tram or bus
- Protected on road radial cycle routes into the City Centre from main directions
- More active and residential neighbourhoods becoming walking and cycling friendly
- At least one cycling friendly town in each of Edinburgh and the Lothians
- Widespread cycle sharing scheme, including e-bikes and cargo bikes
- Bike Hubs offering storage and servicing facilities, showers, lockers, etc.
- On street secure cycle storage especially in tenement areas
- A Cycling Commissioner for Edinburgh leading significant improvements for the cycling and supportive changes across all areas of the Council

Photo: Mike and Rosie would like to thank everyone who helped us put this exhibit together, and... for their financial support. Visit our website at www.spokes.org.uk

40th Anniversary

The exhibition
has been
shown at over
20 venues.



Exhibition at Out of the Blue Drill Hall

Recent worksheets

Spokes produces worksheets on cycling related topics.



Think your workplace could be more bike-friendly?

This factsheet is for you if you cycle to work (or would like to).

It explains how to work with colleagues and your employer to improve facilities for cyclists at your workplace.

The ideas here mostly come from a large site, but will also be very useful in a smaller workplace.

Workplace Cycling was distributed to Bicycle User Groups (BUGs).

There are BUGS in Edinburgh
Edinburgh University
Bush Estate
Queen Margaret University
Heriot Watt
West Lothian Council
RBS

Recent worksheets

Supermarket Parking and Access

Leaflet to give to your local supermarket to install more cycle parking spaces, with guide for design.

Why improve bike parking and access?



Recent worksheets

E-bikes

How e-bikes have transformed lives and practical tips on using and accessing



WHY E-BIKE?

A recent Spokes competition asked...

"What has transformed your cycling life?"

Five entries came from people of middle age or over who had bought an e-bike.

Some had not cycled for years or decades, but all now cycle remarkable distances, for work and/or leisure. Four of the five had lost weight: three had lost 1-2 stones, one had lost "a ton of weight" and the fifth was slim already! For all five, their e-bike had transformed their lives.

This factsheet tells some of their stories and shows how you can do the same!

What is an E-bike?

- ◆ Basically, it's a bicycle with electrical assistance which can only operate when you are pedalling

The E-Bike Smile!!

Although she didn't enter our competition, Edinburgh City Council's Transport Convener, **Councillor Lesley Macinnes**, could have been in line for a prize too!!

In May 2018, not having cycled for 35 years, she bought a lovely red e-bike - and took to it like a duck to water (yes, even on some rainy days!) - so much so that she now enters the office with an *e-bike smile* !



photo and quotes courtesy of The Edinburgh Reporter



Bike Alert/Operation Close Pass *SP* *KES*

The police are still distributing 15,000 Bike Alert Leaflets for Operation Close Pass.

“A great tool for both close pass ops and educational type events,” the police.

The leaflet and video are also used at Young Drivers Events in August and October.

Brunton Theatre

5 High Schools

Big event at Corn Exchange





Edinburgh Festival of Cycling



4 events – Transforming City Centre – public meeting; Spokes Bike Breakfast; Velorution Tour; 40 years of cycle campaigning

Join us on your bike, June 2018

Wednesday 13 June	Wednesday 13 June
Transforming Our City Centres – public meeting Times 19:30 - 21:30 (doors open 6.45) Venue Augustine United Church, George IV Bridge, EH1 1EL • Daisy Narayanan, Leader of Central Edinburgh Transformation Project • Prof David Begg, Leader of Glasgow Connectivity Commission • Cllr Adam McVey, Leader of City of Edinburgh Council  #SpokesMtg	Spokes Bike Breakfast 2018 Times 07:45 - 09:00 Venue Edinburgh City Chambers, High Street, EH1 1YJ #SpokesBB • Free breakfast • Free Spokes map for first 20 arrivals after 7.45 • Bike Security marking, Police Scotland • Chain clean & lube, Edinburgh Bicycle • Councillor & MSP speeches, 8.30-ish • Wide range of stalls and attractions  #SpokesBB

Tuesday 12 June	Monday 18 June
Spokes Cycling Velorution Tour Times 18:15 - 20:00 Venue Meet top of Middle Meadow Walk • Guided tour of local infrastructure evolution • Past, present, possible future • Slow & fairly central Numbers limited; advance booking essential. Email: bycyclinged@gmail.com  #SpokesInfra	From zero to 200 miles of cycle route: 40 years of cycle campaigning – seminar Times 19:00 - 21:00 Venue Augustine United Church, George IV Bridge, EH1 1EL #Spokes40 • From eccentricity to everyday transport • Work trips from 1% to 2% to 4% to 8% to ? • Talk/exhibition/video/discussion  book online at edfoc.org.uk

More details of all events at: spokes.org.uk + edfoc.org.uk

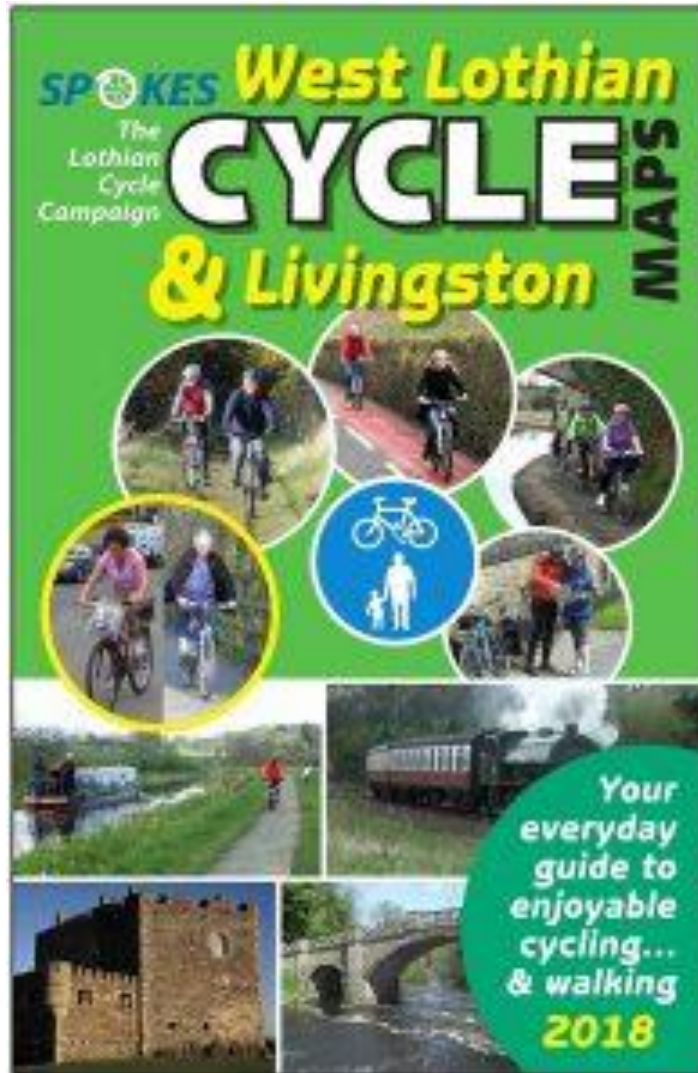


2018 West Lothian Map



Our West Lothian map came out in June 2018

Every km square on the map was surveyed by local volunteers, co-ordinated from Balerno and Livingston.



2018 West Lothian Map



**Official launch of map with
West Lothian Council**

Public Meetings



Spokes holds 3 public meetings each year
November 2017 - Cycling Plans in the New Councils

March 2018 – Cycling and the Tram Extension

June 2018 – City Transformation

The public meetings in March and June were “big news” meetings

March - plans for the tram extensions presented

June - exciting city transformation project revealed by **Daisy Narayanan**, seconded from Sustrans to head the project
Over 100 people attended.



Stalls

30 – 40 active volunteers
30-40 stalls in different venues



Stall at Castle Terrace Farmers' Market

Cargo bike grants

CARGO BIKES – GRANTS

Spokes offers grants to local community groups towards the cost of a cargo bike.

Hearty Squirrel food coop £500– food transport to stalls at Edinburgh University campuses and outside events

Food Sharing Scotland £500 each for up to 2 cargobikes for Tyred of Food Waste project to collect and distribute surplus food from supermarkets

Bikes for Refugees - £500 used to replace journeys where travelling by van or taxi to repair bikes or to deliver joint bike repair workshops

Minikindy – £250 for pick ups and drop offs in Edinburgh, taking children out into nature



Local Groups

LOCAL LOBBYING

Starting to grow. Spokes members involved as individuals.

Valuable as the Council is devolving some transport responsibilities to 4 Localities instead of all being done from the centre.

Roseburn Route Support Group

South Edinburgh Group – **Stella Thomson**

Portobello Spokes 'cell' - **Kirsty Lewin**

West Edinburgh - huge amount of local lobbying by **Henry Whaley** and **Graeme Hart** of Hart's Cyclery in individual capacities

Also cycling advocates are joining the committees of Community Councils



South Edinburgh Cycle Infrastructure Public Meeting

Edinburgh Council has been making cycling safer in the City Centre and North Edinburgh but we **urgently** need investment in cycle infrastructure for **South Edinburgh** and we **seem to have been forgotten!**

We want them to create a **safe cycling environment for residents**. This should enable everyone to:

- cycle confidently within the area
- **safely** cross main roads to reach local shops, schools, library, etc
- connect to routes in the City Centre and beyond



At the meeting we will:

- Hear about cycle infrastructure development in Edinburgh
- Identify **our** key asks to make cycling safe **in South Edinburgh**
- Explore how we **work together** to make it happen

Local councillors will be invited

Tuesday 5th June

7pm to 9pm

Pentland Community Centre, Oxbgangs Brae

Traffic counts

Spokes does 2 traffic counts per year.

Our November traffic count, averaged over our 4 regular count points, found bikes forming 16.5% of all vehicles – our highest ever November percentage, just over last year's 16.4%.

Our May traffic count showed a reduction of bikes from 19.1% to 16.9% of all vehicles.

Plateau in cycle use – levelling off unless step change in infrastructure.



*Thanks to **Barbara** and her team of counters*

Consultations

Much of Spokes's work is examining plans, major and minor, and presenting submissions to include better cycling provision.

They also attend relevant meetings organised by City Edinburgh Council and lobby for extra cycling staff.



Current Significant Consultations



CITY CENTRE WEST TO EAST LINK (CCWEL)

The most radical cycling infrastructure in Edinburgh so far has taken up a good chunk of the Planning Group's time. It included consultations on Melville Street, Randolph Place, George Street and First New Town.

It passed the TRO and RSO 7 to 4 at the Council Transport Committee meeting in June. Lab, SNP Greens, yes, Lib Dems, Cons, postpone.

Date of Scottish Government hearing is not yet fixed. It is hoped that work will begin late 2019.



Current Significant Consultations

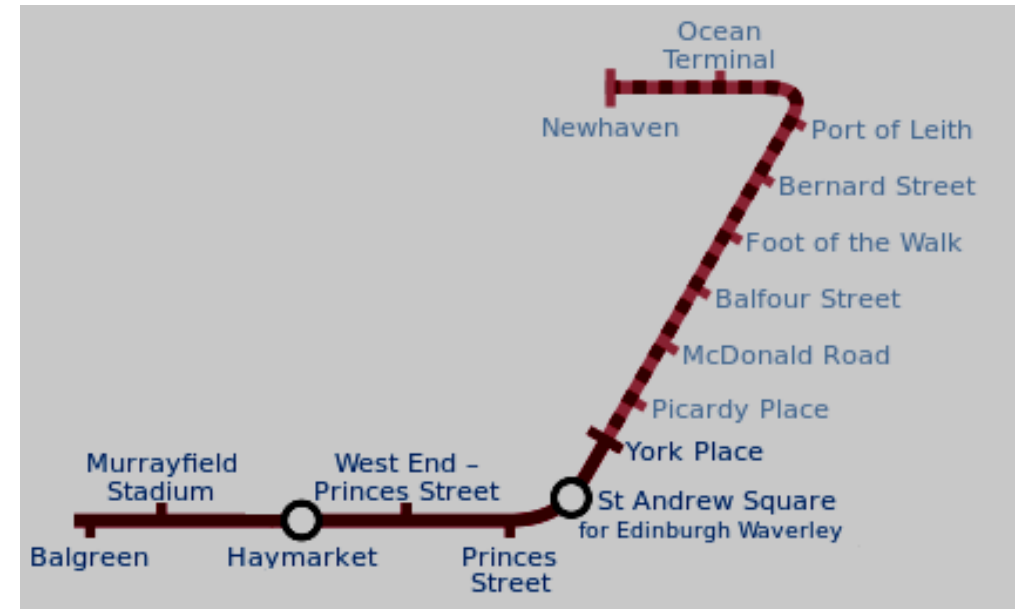


TRAMLINE EXTENSION

Extending the tramline to Leith and Newhaven.
Preliminary design had no cycling considerations.
Council designing a tram corridor not a transport corridor. Not linking to existing cycling infrastructure.
Road space extending, squeezing out cyclists and pedestrians.

Spokes did a big submission in April.

8,000 separate pieces of feedback led to a series of dedicated design workshops. New plans on display in October 2018. Leith Walk will now have segregated cycle lanes for the whole route.



Uncertainties remain - (a) beyond the foot of the walk and (b) the 18-month closure of Leith Walk for construction, when the road will be totally closed northbound and no cycle route in either direction unless council re-thinks.

Current Significant Consultations

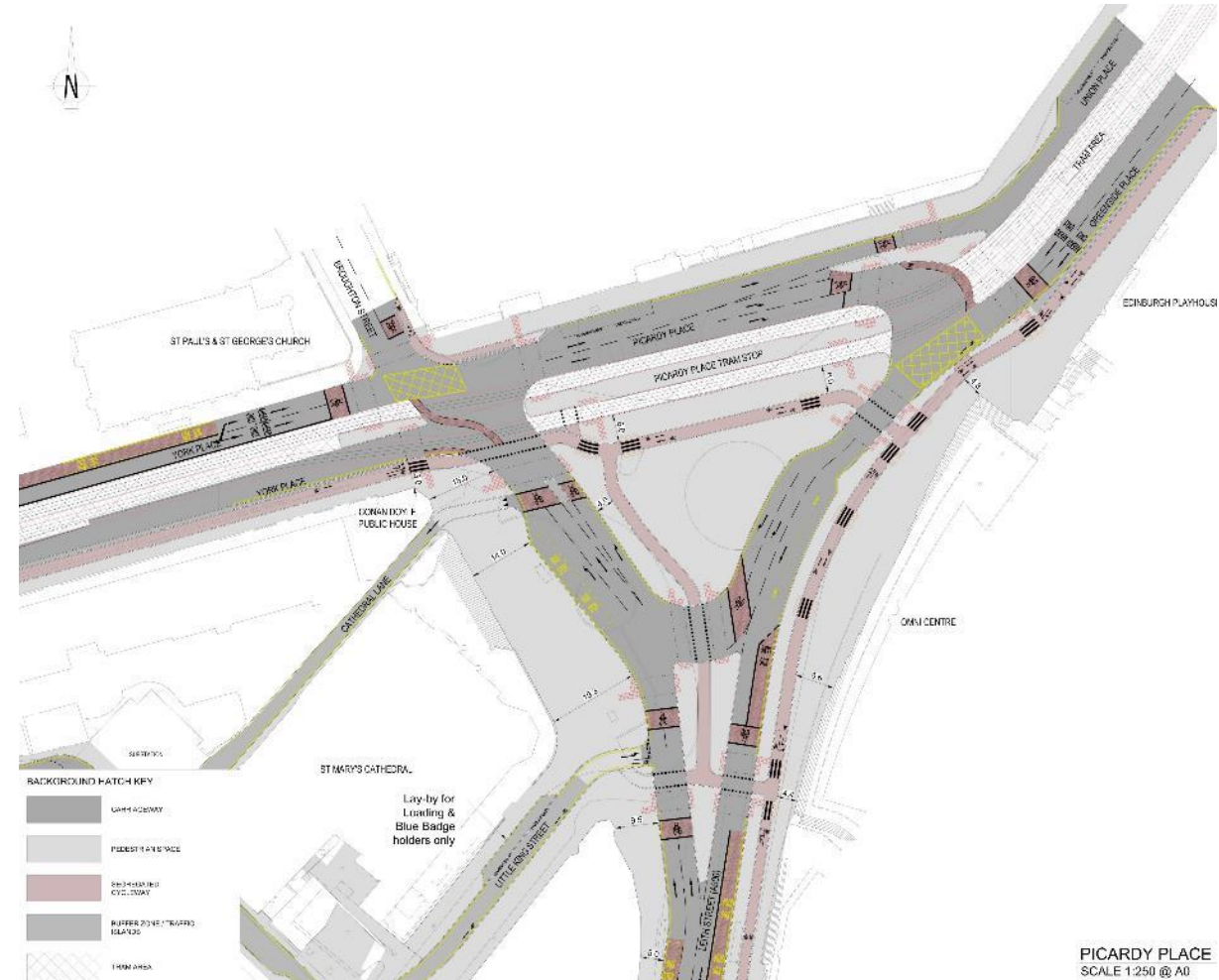


PICARDY PLACE GYRATORY

Spokes opposed the whole gyratory concept, however that was passed, albeit with some major improvements for cycling and walking.

New design provides significantly more useable public space than the earlier designs and cyclist routes which are far clearer and more direct.

Under construction.



Current Significant Consultations



TRAM SAFETY MEASURES

Spokes has been consulted on improvements to the present design.

Red surfaces showing better angles to approach the tracks.

Signs – “Give Cyclists Space”

Advanced Stop Lines

Short length of new segregated cycle lane on Princes Street and red screeded surfacing and road markings to guide cyclists crossing the tram tracks at South St Andrew Street.

Measures still to come

- Princes Street short segregated lane at South St Andrews St
- Haymarket Station, moving island
- Grosvenor St, cycle lane and later (if TRO succeeds) making it exit only
- West End junction rebuild - but this awaits City Transformation



Current Significant Consultations



SHERIFFHALL ROUNDABOUT

First plans didn't mention cycling.
Pushing for connected cycling from
Midlothian to other populated parts.

Consultation still on-going with stakeholder
meetings for non motorised transport. The
plans are an improvement on the status quo.



General developments



ROUND EDINBURGH..

The use of **e-bikes** spreading, including one ridden by Cllr Lesley Macinnes, the Transport Convener.

Bike Life Survey – 80% of Edinburgh residents support building more protected cycle lanes, even at the expense of other road traffic

More **Cargo bikes** appearing



General developments

BIKE STORAGE

Secure on-street cycle parking to be rolled out across the city

Members of the City of Edinburgh Council's Transport and Environment Committee agreed on plans to extend a scheme, which has been successfully trialled in the city's Southside and West End since 2014.

The covered bike storage containers provide much-needed cycle parking in densely-populated and tenemented areas of Edinburgh, which was the first local authority in Scotland to offer the facility to residents.



General developments

EDINBURGH CYCLE HIRE SCHEME

began September 18th.

Sponsored by Just Eat.

2,075 trips in 2018 (30.9.18)



Councillors with the shared bikes



General developments

CITY TRANSFORMATION

Daisy Narayanan, of Sustrans has been seconded to head the City Transformation role. The project is not just transport, but working across departments including input from housing, transport, planning & economic development. **Daisy** outlined her vision at our public meeting in June 2018.

The plan includes:-

City Mobility Plan

Central Edinburgh Transformation

Low Emission Zone

Public Consultation – to November 2018.

August 2019 – Agree finalisation changes informed by consultations.



General developments



CAR FREE DAYS

Car free day in June 2018. Council chiefs have stated that they wish this to be a regular event.

The City of Edinburgh Council wishes to develop an 'Open Streets' programme of vehicle-free days on the first Sunday of each month (10am–5pm) in key parts of the city centre and town centres.

Consulting until end November.



General developments



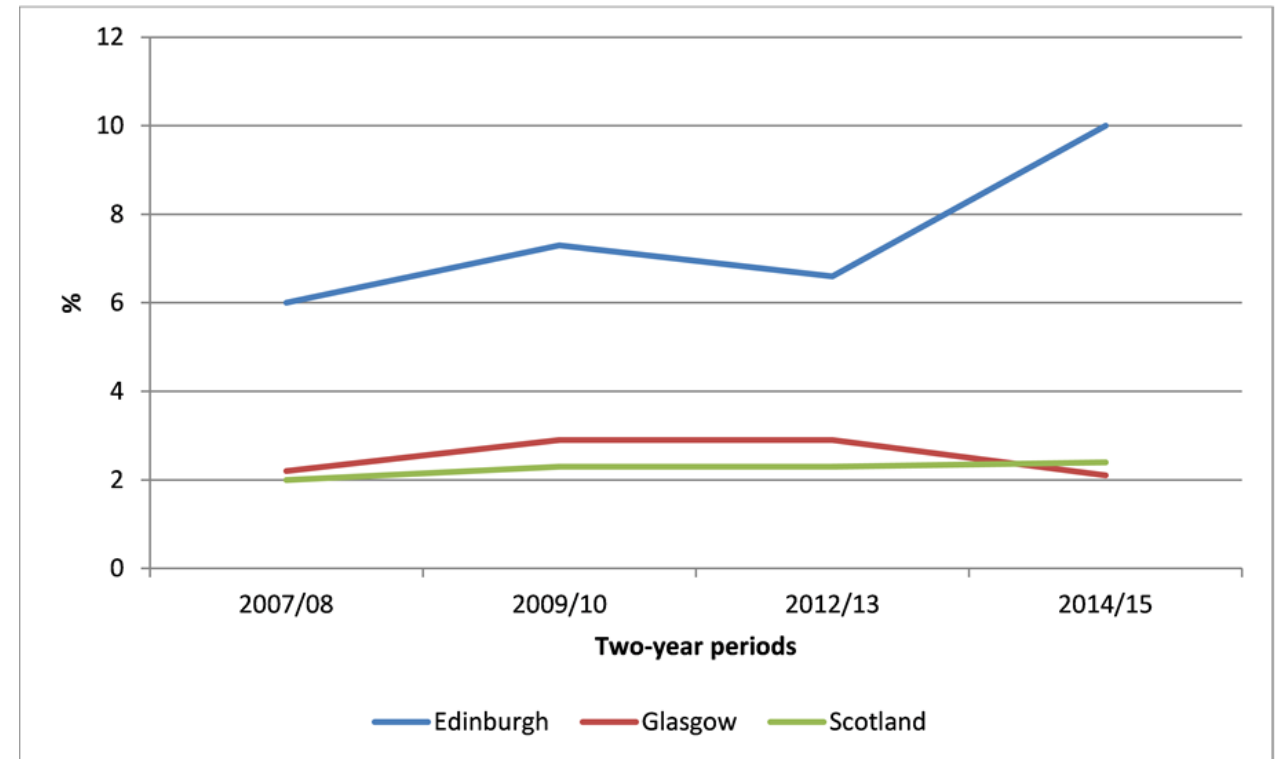
SCOTTISH GOVERNMENT

The **Scottish Parliament Information Service** study shows Edinburgh has the highest proportion of journeys to work by bike of any Scottish Council.

Scottish Government - doubling of **annual investment for active travel** from £39m to £80m, or £15 per person.

Active Travel Commissioner to be appointed.

Figure 1: Proportion of commuting trips made by bike in Edinburgh, Glasgow and Scotland



Data from Transport and Travel in Scotland: Local Area Analysis and Scottish Household Survey: Household Transport (Transport Scotland) 2009-2016

Recent Infrastructure

GILMERTON – SHAWFAIR – ROSLIN PATH EXTENSION

Opened June 2018.

Ramp for better access to Gilmerton - provisional completion November 2018.



Recent Infrastructure

LEITH STREET

Multiple lanes of mixed traffic, cyclists travelling uphill surrounded by lorries, cars and buses; and heavily-used footways which at the top are way below Council standards

Motor traffic prioritised. A few cycling tweaks

Spokes's campaign to get the Leith Walk cycle lane continued all the way to top of Leith St has so far failed as it ends on Calton Road. A few tweaks.

We can hope City Transformation project will introduce changes.



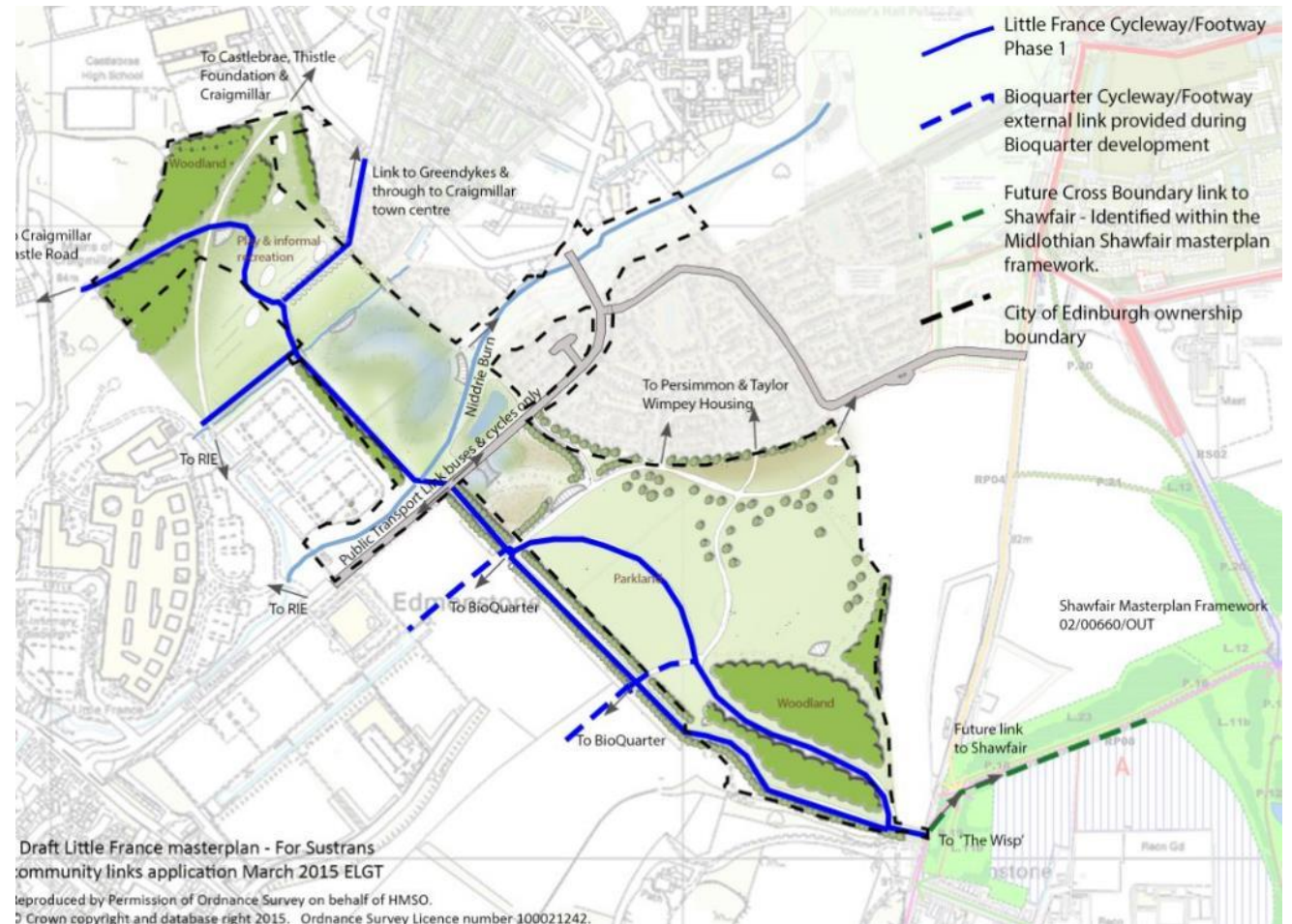
Recent Infrastructure

LITTLE FRANCE PATHS

Runs through the new park, behind the Bioquarter and up towards the Edmonstone Estate.

The new route will link the new and proposed housing developments in the south east of the city and beyond to the city centre and Craigmillar.

Linking the new neighbourhoods as they come on stream to existing residential and employment areas as well as the new Shawfair railway station on the Borders rail line.



Recent Infrastructure

NEPN MAINTENANCE

£900,000 spent on improving drainage, access, signage and general look of the NEPN, including installing benches.



Recent Infrastructure

A71 FOOTWAY

Big splash in the Daily Record about **Peter Hawkins** of the Spokes Planning Group clearing the pavement running alongside the A71, starting at Curriehill Road (April 2018). The Council had scheduled to start maintenance in the summer.



Recent Infrastructure



LEITH WALK

After consultation with Spokes the orcas have been replaced by 'kerb splitters' (mini islands).

2 stage right-turn on McDonald Road

Bus-stop bypass



Bike Rail



Dedicated carriages for cycles and other outdoor sports equipment on rural routes in the north and north west.

Class 153 diesels to form dedicated bike/luggage carriages for northern routes.

Spokes involved in this process. Spokes part of the stakeholders offering feedback on the design. Stakeholder consultation.



Future developments



WHAT NEXT?

Many projects were put on hold because of staff shortages. With more staff in the Active Travel team we can hope that some of these projects will move on.

City Centre West To East Link (CCWEL)– Scottish Government Hearing

City Transformation Project June – August 2019 – Agree finalisation changes informed by consultation

Meadows to Canal– construction 2019

Completion of tram design

Onstreet storage - expected to go out to tender shortly, for a company to install and operate the system. Units should be in place some time in 2019.

Consultation/planning continuing for:-

- Meadows-George.St

- West Edinburgh- George Street

- Roseburn to Canal

About Spokes



Spokes has been promoting cycling as everyday transport for forty years in Edinburgh and the Lothians.

We are non-party political.

We are funded by donations and map sales.

We have a membership of 1200.

We produce a bulletin 3 times a year with a 13000 print run, delivered by 50+ volunteers by bike.

www.spokes.org.uk

Twitter:- Spokes CycleCampaign@SpokesLothian

Facebook:- Spokes the Lothian Cycle Campaign

Thanks to...

Martin – main organiser

Kate and helpers – stall

Kenny – membership stall

Judy and helpers – teas and coffees

Shane - electronics

Dave - promotion

Rosie - presentation

Meeting tweeting

@SpokesLothian – hashtag

#SpokesMtg



Autumn Public Meeting : all welcome : Thu 15 Nov 2018

Cycling for All .. Diversity Rules!

Age, high or low
Fitness, or not
Gender, whatever
Ethnicity, whatever
etc, etc

Getting about by bike should be – and can be! - for almost everyone. Hear from the people who have achieved it, and discuss what is needed! Infrastructure ... Suitable bikes ... Buddies ... Confidence ... and ???

the good and the bad

A wide range of organisations fostering diversity in cycling will each speak for 5 minutes on what they do and why it matters ... then a 1-hour panel discussion and Q/A chaired by Spokes member **Alison Johnstone MSP**

West Lothian Bike Library David Liddell	Woodland Wheels Anna Canning
Horatio the e-bike – our journey so far Councillor Mark Brown	Ageing Well Morag Bryce
ELREC [Ed & Lothians Regional Equality Council] Ruth Mutyambizi	Bikes for Refugees Marjan van de Weg
All-Ability Cycling & VIE Velo David Glover	Knox Academy, Haddington Archie Goddard, S6 pupil

Starts 7.30 Ends 9.30
Doors Open 6.45

Augustine United Church, 41 George IV Bridge, EH1 1EL

Meeting tweeting [@SpokesLothian] - Use hashtag #SpokesMtg
Facebook [Spokes Lothian] - We hope to live stream the meeting

Come early ☕ coffee 🚲 Spokes stall 📺 exhibition 💬 chat

Organised by **Spokes The Lothian Cycle Campaign**
St Martin's Community Resource Centre, 232 Dalry Rd, Edinburgh EH11 2JG
spokes@spokes.org.uk (0131) 313 2114 (Ansaphone)
www.spokes.org.uk Twitter: @SpokesLothian