

Spokes the Lothian Cycle Campaign 0131 313 2114 [spokes.org.uk](http://spokes.org.uk) [spokes@spokes.org.uk](mailto:spokes@spokes.org.uk) twitter @SpokesLothian  
St Martins Centre, 232 Dalry Road, Edinburgh EH11 2JG - this is a postal address, Spokes is a voluntary body with no staff

## BUDGET EMERGENCY

Transport is Scotland's top climate emissions source, with road traffic its largest component. Yet the 19/20 Scotland Programme for Government [PfG] fails to increase active travel cash, despite the First Minister telling Parliament that the *climate emergency* is the “*centrepiece*” of the PfG [gov.scot/publications, 3.9.19].

Meanwhile trunk road growth is to continue, bringing yet more traffic to urban areas. The PfG recognises the impact of growing congestion on bus reliability, with a welcome £500m bus corridor fund - but the cycle, walk and road policies belie the 'climate centrepiece' claim.

### CLEANER AIR STRATEGY REVIEW

Earlier, the *Cleaner Air for Scotland Strategy Review* [gov.scot/publications, 29.8.19], commissioned and published by the Scottish Government, laid out the kind of steps needed to cut climate and toxic emissions, including the policies below - *but the PfG does not adopt them.*

[para 7.9] *Current funding for active travel is insufficient for transformative change ... Doubling the funding again (i.e. £80m-->£160m) would signal the seriousness of the task and also upskill and expand the human resources needed.*

[7.20] *Additions to the Trunk Road and Motorway network should be significantly de-prioritised and ideally end within the next five or so years\* ... this is so that there is no further demand incentive ... investments in new road infrastructure encourage people to travel further and faster by car.*

\*with some exceptions, such as safety and some rural needs

[7.19 & T5] *Scrappage of polluting vehicles does not have to mean replacement with new motor vehicles. ... include options for e-bikes, public transport season tickets and other incentives to reduce car ownership.*

**Spokes note:** the Scottish Government provides EV and e-bike loans, but in separate silos instead of proactively suggesting e-bike/cargo-bike options to people/businesses considering EVs.

### CLIMATE ACT 2019

Thanks to campaigning by Stop Climate Chaos, and the many people supporting it, the 2019 Climate Act tightens targets. Scotland's greenhouse emissions must now be cut 75% by 2030 [from 1990], reaching zero by 2045.

Scotland now has some of the world's toughest targets; but Green MSPs abstained in the vote, arguing that “*targets are meaningless without actions to meet them.*”

### BUDGET 20/21 – WHAT YOU CAN DO

The draft Scottish budget is due this autumn. It will be the acid test on whether the Air Strategy Review and Climate Act will bring a PfG rethink, including on cycle/walk investment and trunk road expansion.

**Please email or visit your MSPs to make this happen!**

**Inside**

- ♦ **New Cycling Solutions** .. Spokes public mtg ... bike hire, bike storage, cargo bikes
- ♦ **Cycling inspiration** centre-page supplement
- ♦ **City Centre Transformation** – approved!

## EDINBURGH INVESTMENT



New Edinburgh path avoiding Lower Granton Road *Laidback Bikes*

## GLASGOW INVESTMENT



Glasgow City Centre Avenues project, Sauchiehall Street pilot - segregated bike route, trees, wide footway, car lanes cut 4 → 2. Other Councils have similar ambition but rapid and widespread execution needs more government cash. *Urban Realm Design*

## TARGET MISSED

The biggest non-surprise of 2019 is the long-overdue government admission that it will miss its 2020 target for 10% of all trips to be by bike [Parliament, 18.6.19].

The latest government *Transport & Travel in Scotland* report [transport.gov.scot/publications] found just 2.8% of work trips by bike in 2018 and a mere 1.4% of all journeys.

Also shocking is an apparent redefinition as 10% of *journeys under 5 miles, not all journeys* [LTT 5.7.19] - so the Cabinet Secretary could tell Parliament we are at 4%! The definition, dating from 2009, was “*all journeys*” and was a “*target*,” not just a “*vision*.” [e.g. government 2009 letter at [spokes.org.uk : documents : national : 0906](http://spokes.org.uk : documents : national : 0906)].

It flopped because it was miserably resourced from the start. Only in 2018 did significant change begin, due to then Minister **Humza Yousaf** MSP, who doubled annual investment to £80m from 2018/19 on [Spokes 129].

**Help Spokes, other cyclists, and yourself, by contacting your MSPs, MP, councillors and the press periodically. See back page for contacts. Ask them to raise your point with the relevant Minister/Convener. Send us the results!**





## NEW CYCLING SOLUTIONS

### EDINBURGH CYCLE HIRE E-BIKES

The first 30 Just Eat Edinburgh e-bikes can now be tried out at community events (such as Open Streets on the first Sunday of each month). The full 168-bike fleet will be launched for public hire in the Spring. The bikes give e-assist up to 15mph max and can even zoom up Ramsay Gardens (photo)! They will be located with the normal bikes and unlocked the same way. Contact [edinburghcyclehire.com](http://edinburghcyclehire.com) for more info or to discuss possible ebike events.

### CARGOBIKES

Use of cargo-bikes for local transport of everything from parcels to goods to children is common in Europe and growing rapidly in Britain.

Edinburgh looks set to join, notably with Council and Sustrans cargo-bike support for Leith Walk businesses during tramline construction. More at our public meeting!

### SPOKES CARGOBIKE CASH GRANTS

Thanks to a kind anonymous donor, Spokes offers grants up to **£1500** or 50% of the cost [whichever is least] for community groups in Edinburgh or Lothian needing a cargo bike. Grants at our discretion; conditions apply.

For information sheet and application form go to [spokes.org.uk](http://spokes.org.uk) : documents : advice : cargobikes.

Larger grants and loans are available to a range of organisations, for cargo-bike and ebike fleets, from [energysavingtrust.org.uk/scotland/grants-loans/ebike-grant-fund](http://energysavingtrust.org.uk/scotland/grants-loans/ebike-grant-fund).

### TRY/HIRE/BUY A CARGO BIKE

- ♦ CBs can be *hired* from **Harts Cyclery** [see p4 advert] and from **Festival of Cycling**, [edfoc.org.uk/cargo-bike-hire](http://edfoc.org.uk/cargo-bike-hire).
- ♦ CBs can be *purchased* from **Harts**, **Laidback** and **Edinburgh Bicycle Coop** [see p4 adverts for contacts].
- ♦ Businesses can borrow CBs free for a trial period from **Sustrans Scotland**. Info: Search *cargo bike* at [sustrans.org.uk](http://sustrans.org.uk).

### Fri 15 Nov: SPOKES PUBLIC MTG

## New Cycling Solutions for Edinburgh

Don't own a bike? Nowhere to store one? Limited carrying capacity? Many of the restrictions which used to limit bike travel and transport are starting to fade, thanks to new innovations and opportunities ...



Find out what's happening from the people delivering the new solutions; then a 1-hour panel discussion & Q/A, to voice **your** thoughts, chaired by **Dr Caroline Brown**, Urban Institute, Heriot-Watt University

**Richard Armitage**

- European Cycle Logistics Federation - Executive Director
- Last Mile Manchester - Director
- Manchester Bike Hire - Director

**Cllr Lesley Macinnes**

- City of Edinburgh - Transport & Environment Convener

**Katherine Soane**

- Edinburgh Cycle Hire, Transport for Edinburgh

**Gavin Rimmer**

- Cyclehoop - business development manager

**Starts 7.30 Ends 9.30**

**Doors Open 6.45**

**SPOKES**

**Augustine United Church, 41 George IV Bridge, EH1 1EL**

**Meeting tweeting** [ @SpokesLothian ] - Use hashtag #SpokesMtg

**Facebook** [ Spokes Lothian ] - We hope to live stream the meeting

☺ Come early ☺ coffee ☺ Spokes stall ☺ exhibition ☺ chat



# cyclehoop

**Bikehangar**

**info@cyclehoop.com**

**0208 699 1338**

**Perfect cycle parking for:**

- on street
- business
- private



## INSPIRED TO GO BY BIKE!

Our [summer competition](#) revealed a fascinating range of motivations which inspired adults to *start using a bike* or to do so *more regularly for everyday journeys*. The stories were so inspiring that we've prepared a *cycling inspiration* factsheet [[spokes.org.uk: documents : advice](https://spokes.org.uk/documents/advice)].

**Top motivations to start cycling or to cycle more were...**

- ♦ Friends and relations [have you tried inspiring yours?]
- ♦ Climate and environment concerns
- ♦ Health and fitness
- ♦ Ones children: being with them, and concern for their future
- ♦ New opportunities provided by e-bikes

**In addition, people were motivated to stay using a bike by ...**

- ♦ The joy of cycling [a great discovery once one has begun]
- ♦ Reliability/consistency of journeys by bike compared to car

**Some inspirational quotes...**

- ♦ *Getting on two wheels brought immense joy. I've done all I can to share that joy and inspire others out of the car.*
- ♦ *I now have back problems which affect my walking, but the problem seems to disappear when I'm riding my bike!*
- ♦ *For my children's future there are so many reasons – climate change, physical and mental health, air pollution.*
- ♦ *I owned a car but relaxed when I sold it and reverted to bike as my main transport – conscience clear again!*

**Like last year, women easily outscored men - 50% of female entrants won prizes but just 23% of men!**

**Prizes** - our thanks to *ScotRail, Edinburgh Bicycle Coop, Sustrans, Laidback Bikes, Harts Cyclery, Camera Obscura & World of Illusions, Boardwalk Beach Club, Filmhouse, Kalpna, Festival of Cycling, Lanterne Rouge, Cafe Milk.*

**More info** - See our website [blog [16.9.19](#)] for all the entries, more about the prize donors and a link to earlier comps such as *Cycling Jokes/ Recipes/ Problems/ Routes.*

## Top Twelve Prizewinners

1 Katharine Wake, Blackhall	Lifetime of inspirations
2 Charlie Wood, Portobello	My children's future
3 Andrew White, Willowbrae	Climate Crisis: be the change
4 Nick Connor, Morningside	Seeing people using bikes
5 Jamie Thin, Liberton	Inspired by blind friends
6 Malcolm Bruce, Telford	Campaigning & environment
7 Steven McClusky, Leith	Supporting refugees to cycle
8 Katherie Ivory, Newington	Inspiring workplace colleagues
9 Hazel Darwin-Clements, Willowbrae	Climate conversation & e-bike
10 Cherry Ledlie, Southside	E-bike to overcome hills
11 Eileen Holttum, Marchmont	My mum
12 Fenella Watson, Kirknewton	Stay healthy despite toddlers

## JEREMY VINE SHOULD HAVE ENTERED!

*"I loathed cyclists until I was 45. They were a strange hybrid of road user and pedestrian who got in the way of both.*

*"I was stressed at work and miserable, shuttling round in cars and tubes and turning up late everywhere. Feeling I was fraying I bought a bicycle. It cost £250.*

*"I started to cycle the 6.5 miles to BBC Radio 2. It was transformative. Quickly I got slimmer and happier. My headaches went, my mood lifted. Without touching Lycra, I was addicted.*

*"My gentle cycling averages 9.8mph; vehicles in daytime central London average 7.8mph. **Accidentally, I have discovered the future . . . a city where we travel light and use our own energy to move around.**"*



## SPOKES MAPS [spokes.org.uk/spokes-maps](https://spokes.org.uk/spokes-maps)

Spokes volunteers are working hard to survey the whole of **Midlothian** for our Spring 2020 edition. All our maps will then be on tear- and water-resistant recyclable paper.

Thanks to ongoing high sales we are having to reprint our **Edinburgh** map for the second time (with some updates). The next full revision is expected in 2021.

### BUYING SPOKES MAPS

- ♦ **Edinburgh; E.Loithian; W.Loithian/Livingston**, on water-and tear-resistant paper, £6.95 in shops. **Midlothian** £5.95.
- ♦ **Special price** for orders *by post* to Spokes: Ed,EL,WL £5 each; ML £4; **Plus** £1 p&p **per order**. Cheques to 'Spokes.'
- ♦ **Free with orders by post:** one copy *per order* (not per map) of *Favourite Cycle Rides* **or** *Favourite Cycling Recipes*. Please say which, or none will be sent.
- ♦ **Users say...** *a joy to use, wonderful, superb, among the finest, We have one on our office wall – it's often used.*

Many organisations display spokes maps to encourage staff walk and bike commuting, but this weatherproof outdoor display by [West Lothian Bike Library](#) is a first!



**FREE:** Laminated unfolded Edinburgh 2010 Spokes maps - good for pinboards! Contact [maps@spokes.org.uk](mailto:maps@spokes.org.uk).

## LEISURE BIKE RIDES

**Spokes Sunday Rides - 'Explore, Dream, Discover!'**

First Sun each month, 30-40 miles. Meet 10am, Usher Hall. Under 14s *must* be with an adult. Pub/café lunch or bring picnic. We help at breakdowns and wait for the less-fast. Your bike *must* be in good order. [www.snowcycle.co.uk](http://www.snowcycle.co.uk) 445.7073.

**Other Edinburgh rides** - [www.cycling-edinburgh.org.uk](http://www.cycling-edinburgh.org.uk) includes 'very easy' rides, regular rides, weekend rides.

**On all rides - Please ride considerably and carefully. You are entirely responsible for your own safety.**

## 😊 THANK YOU 😊

*Spokes is funded by donations from our 1000+ members and sales of our unmissable maps. Thus we can speak out without fear or favour, not worried about losing funds.*

**Join Spokes!** See [spokes.org.uk/membership](https://spokes.org.uk/membership)

## SPOKES MEMBERSHIP RENEWAL

*Members not yet renewed for 2019 receive a reminder in this mailing. If you are up to date you'll get a 2020 renewal form in Feb/March – please don't try to renew in advance!*

## SPOKES BULLETIN INFORMATION

**Editor** Dave du Feu **Printer** Barr Printers **Print run** 13,000+  
Bulletin text may be used freely, if you credit us and give our website. **Created with** Openoffice.org **Next Issue** Feb 2020.





**CYCLE LAW**  
Scotland

**SCOTLAND'S SPECIALIST,  
POST-ACCIDENT SERVICE  
FOR CYCLISTS, BY CYCLISTS**

Visit: [cyclelawscotland.co.uk](http://cyclelawscotland.co.uk)  
Call: 0333 555 7783  
Text: "CLS" to 60155

**FOR  
CYCLISTS  
BY CYCLISTS**



For a day away, or a longer break, take your cycle on ScotRail trains. Cycles are carried free on all services, and we provide cycle storage facilities at most of our stations. Find out more at [www.scotrail.co.uk](http://www.scotrail.co.uk) or contact us on 0344 811 0141.

ScotRail is operated by  
**abellio**

**All sorts of bikes for all sorts of journeys**

**EST Loans Available** one size fits all **includes FRAME LOCK**

**Shimano Steps**



**NIHOLA E-BIKE** - full Danish design, airshock, lights, discs, stand, rack, 700c

**CIRCE HELIOS TANDEM** with cargo options  
E-version available. Multi-person, multi-use



**URBAN ARROW™** - best selling powerful Bosch assist family & cargo



**Making light work of cargo**

Open 10-6 Saturday  
By request other days

**Laid Back** 14 St Peter's Place, Edinburgh EH3 9PH

[laid-back@blueyonder.co.uk](mailto:laid-back@blueyonder.co.uk) 07981 430159 [www.laid-back-bikes.scot](http://www.laid-back-bikes.scot)

Gazelle Orange C8 HMB eBike



**KONINKLUKE Gazelle**

Hart's Cyclery is Edinburgh's exclusive Gazelle dealer!

The best city and utility bikes in the world, including Gazelle's extensive range of electric bikes, available right here.

253 St John's Road, Edinburgh, EH12 7XD 0131 334 1441

**HART'S CYCLERY**

[HARTS-CYCLERY.CO.UK](http://HARTS-CYCLERY.CO.UK)



**GIVE THEM ADVENTURES, NOT JUST A BIKE!**

**RESERVE YOUR CHILD'S BIKE FOR £10 AND  
WE'LL STORE IT FOR FREE UNTIL CHRISTMAS**

Available in store:  
Bruntsfield: 8 Alvanley Terrace, EH9 1DU  
Canonmills: 30 Rodney Street, EH7 4EA  
[www.edinburghbicycle.com/ten](http://www.edinburghbicycle.com/ten)

**EDINBURGH BICYCLE COOPERATIVE**

**Allan McDougall**  
SOLICITORS

Expert legal advice for cyclists

0808 560 0872  
[allanmcdougall.co.uk](http://allanmcdougall.co.uk)

With you every  
pedal of the way



# NATIONAL & GLOBAL

Growing weather extremes in Britain and around the world are convincing the public that the science is right - the climate crisis is real and action is urgent.



Spokes stall at the 20 September Edinburgh Climate Strike

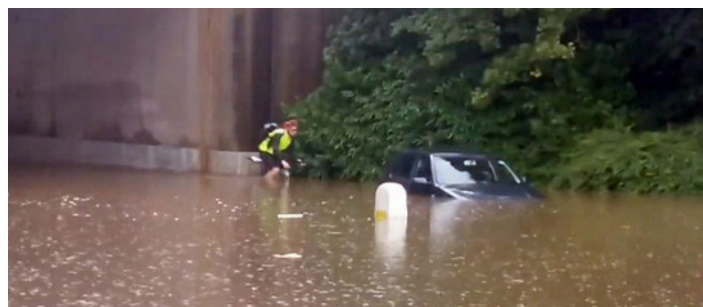
The October worldwide climate strike saw 25,000 adults and children on Edinburgh's streets and, shortly after, the Scottish Parliament gave all-party support to a Labour amendment upping Scotland's 2030 emissions target. **Thanks if you took part and/or contacted MSPs.**

Climate heating impacts are increasingly devastating in hotter and colder parts of the world but, even in our own more temperate climate, the effects grow more and more obvious. The highest UK temperature ever recorded - 38.7C - occurred in July, as records fell Europe-wide.

By April 23, Britain had suffered more **wildfires** than in any previous whole year. Scotland wildfires occupied 5000 firefighter hours in 2018, compared to just 600 in 2009. Warmer air holds more water, and **flash floods** are now so common as to be losing their newsworthiness.



Wildfires across Britain in Feb 2019 - this one on Arthur's Seat.  
More info - google 'wikipedia UK wildfires 2019'



West Edinburgh was hit by flash floods in June and again in August, closing the main Edinburgh-Glasgow railway for a day.

## TARGET v. ACTION

Scotland now has some of the toughest climate targets in the world – but, as the **UK Committee on Climate Change** told Parliament, “Targets do not themselves reduce emissions any more than speed limit signs make all drivers slow down.”

Action so far has concentrated on the 'easy bit' - renewable energy. But we badly also need the hard bit - cutting demand. Transport is now Scotland's top emissions source, and rising, and is our main interest, so here we put forward ideas to help tackle transport emissions.



Climate march

- ♦ **Trunk road expansion** As proposed by the government's independent *Clean Air Strategy Review* [p1], this must end. Some local safety improvements may be needed, but current policy encourages more and longer journeys, dispersion of businesses, shops and households, and more traffic in towns.
- ♦ **Active travel cash and staff** In 2018 Transport Minister **Humza Yousaf** doubled bike/walk investment to £80m a year. A huge step then [[Spokes 129](#)] - but Sustrans and councils are now geared up to use more. Staff should also shift from road to active travel and public transport. Further cash is also needed for **cross-boundary routes**, such as Musselburgh-Portobello, which councils rate lower priority than routes in their population centres.
- ♦ **Flying** Tax breaks for this, the most polluting transport mode, should go: VAT-free tickets, duty-free airport retail, jet fuel.\* A *frequent-flyer levy*, zero on the first flight each year, rising with each subsequent flight, is already Green policy, and being considered by Labour. Flying is very unequal: 10% of the UK population make 60% of flights and each year over 50% don't fly at all. You can make a personal pledge at [flightfree.co.uk](http://flightfree.co.uk).  
\*search for tax break at [transportenvironment.org](http://transportenvironment.org)
- ♦ **Small legislative changes** The Scottish Government has opposed or delayed several measures to improve cycling conditions. For example, opposing default **20mph** [p8] and 3 years (so far) deciding whether to ease rules on front garden bike sheds [[Spokes 133](#) p8].
- ♦ **UK change** Perhaps the best way to increase pressure for climate-friendly measures at UK level would be votes at 16! - already the law in Scotland.

**Send your suggestions to your MSPs. Ask to get your ideas into the forthcoming Scottish Budget 20/21.**

**“The problems in the next 30 years are really major and are going to cause social unrest, great changes in the way we live and eat ... It is going to happen.” The most encouraging thing is that the electors of tomorrow are making their voices very, very clear”**

Sir David Attenborough, giving evidence at a House of Commons committee, 9 July 2019



# CITY CENTRE TRANSFORMATION

On 19 September Edinburgh Council approved the *Transformation Strategy* [Spokes 134]. The 10-year plan will see car-free streets in the Old Town (from 2021) and car-reduced elsewhere in the centre, with much improved conditions for walking, cycling and public transport.

In a Spokes deputation supporting the Strategy, Chris Paton said *"I have never visited another city and thought, 'this place would be better with more cars.'"*

This is the boldest re-think since Cllr David Begg in the late 1990s banned cars from Princes Street, installed its cycle lanes (removed by a later Council) and created bus Greenways on arterial routes into the centre.

Of course the strategy will continually evolve, based on experience and new opportunities. We will argue for...

- ♦ **Action, not words.** Delays plague many Council projects
- ♦ **Tougher targets** for reduction of private motor traffic
- ♦ Higher priority for the **Lothian Road 'boulevard'** – Spokes counts show 20% of peak-hour citybound vehicles are bikes
- ♦ Higher priority for the **West End Junction** where Zhi Min Soh was killed by traffic in a suspected tramline crash
- ♦ **Segregated cycling** in certain key streets currently shown only as 'possible,' including Morrison St & top of Leith St.

**More info:** [spokes.org.uk:documents/submissions:local:1909](http://spokes.org.uk:documents/submissions:local:1909).

**Open Streets** Old Town streets will be car-free each month on the first Sunday, pending permanent pedestrianisation in 2021.

## RELATED DEVELOPMENTS

**West-East Route phase 1, Roseburn-Haymarket**  
Work cannot begin until the government inquiry into objections reports, expected in January. This has caused a 15-month delay *so far* – and the inquiry is in effect just repeating Edinburgh's own extensive consultations.

**Picardy/Leith Street** On legal advice the Council won't 'open' this segregated route until the government inquiry ends. Many people, however, use it for their own safety!



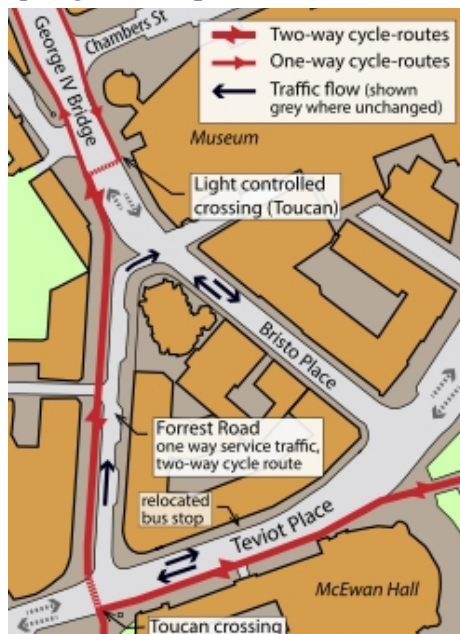
**Beyond Foot of the Walk** Work on the tram extension begins soon. Leith Walk will get high quality segregated provision [Spokes 132] but beyond that is not yet designed. *We fear tramline injuries until the promised alternatives appear, especially for narrow Constitution Street.*

**Edinburgh Low Emission Zone** The Spokes consultation response is at [spokes.org.uk:documents/submissions:local:1907](http://spokes.org.uk:documents/submissions:local:1907).

## 2019: IDEAS CATCH-UP ... CONSTRUCTION: WHEN?

### FORREST ROAD

Spring 2017: [Spokes Bulletin 127](#)



2019: Meadows-Geo.St consultation



The **Transformation Strategy** includes many proposals for which Spokes has long argued, including these three vital schemes and even the walk/bike bridge to Leith St, across Waverley valley [Spokes 134]. **It is great now to see them in the strategy – but when will they be built?? Ask your councillors!**

### LOTHIAN ROAD

Sept 2017: [Spokes 2027 poster](#)

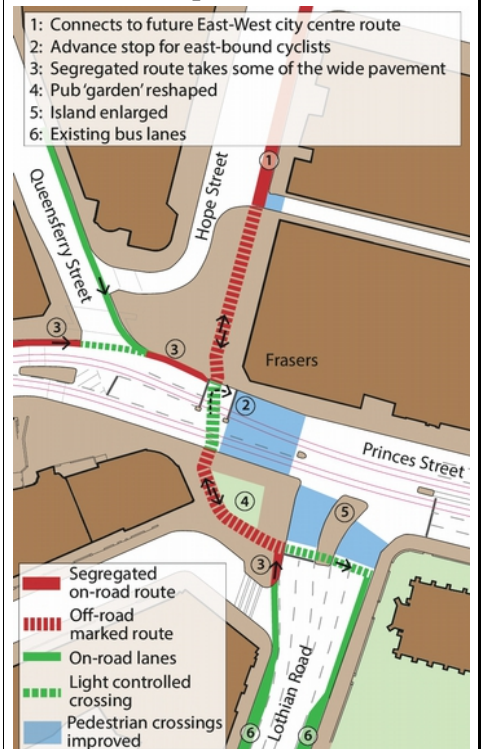


2019: City Centre Transformation



### WEST END JUNCTION

Winter 2015: [Spokes Bulletin 123](#)



2019: City Centre Transformation

*"Importantly, improvement to pedestrian and cycle movement across Princes St/Lothian Rd junction will be a key early intervention to address immediate safety and operational concerns."* [Strategy, p64]



# SELECTED LOCAL NEWS

If anything on this page concerns or encourages you, contact your councillors. See p8 or [edinburgh.gov.uk/councillors](http://edinburgh.gov.uk/councillors)

## BIKE BUSES

A fantastic development in 2019 has been the proliferation of primary school 'bike buses', pioneered by Sciennes Primary, with several now attracting a magnificent 100-150 pupils and adults! They are hugely inspirational for children and parents; and a strong message to other road users - and to councillors! So far, we know of these bike buses ...



Davidsons Mains bikebus

- Sciennes [sciennesactivetravel.wordpress.com](http://sciennesactivetravel.wordpress.com)
- James Gillespie [blackfordsaferoutes.co.uk](http://blackfordsaferoutes.co.uk)
- Blackhall photos – [google catlin blackhall bikebus](https://www.google.com/search?q=catlin+blackhall+bikebus)
- Davidson's Mains twitter [#DMainsBikeBus](https://twitter.com/DMainsBikeBus)
- Corstorphine twitter [#corstorphinebikebus](https://twitter.com/corstorphinebikebus)
- Canal View [@CanalViewPSEdin](https://twitter.com/CanalViewPSEdin)

### Resources...

- Guide to running a bike bus – it's one of the downloads at [cycling.scot : resources : school](http://cycling.scot/resources/school)
- Edinburgh bike bus twitter account [@BikeBusEdin](https://twitter.com/BikeBusEdin)

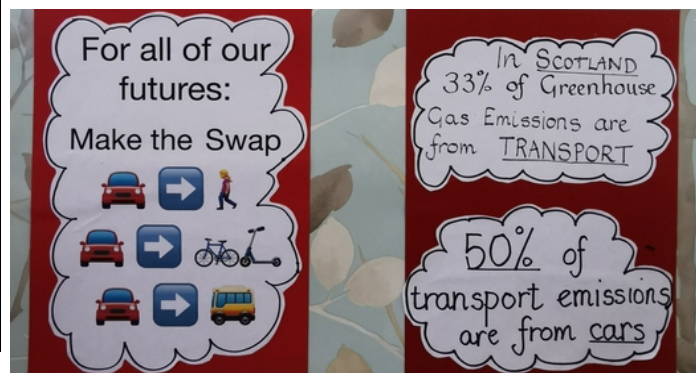
## THANKS CHAS

Cllr Chas Booth is leaving the Transport & Environment Cttee, to move to Planning. Chas pushed many cycle policy changes – and attended almost every Spokes public meeting to take ideas back to the Council. His successor as Green Transport speaker is Cllr Claire Miller, also a Spokes member!



## SOUTH EDINBURGH

The South Ed Spokes local group held an exhibition at Oxbgangs Library. Group twitter [@Cyclesouthedin](https://twitter.com/Cyclesouthedin).



## ROADWORKS & CLOSURES

Following a Spokes initiative, the Council is considering an *Active Travel & Roadworks* 'best practice' factsheet as part of its Street Design series. There is already a document on legal requirements, but a council wishing to boost active travel needs to promote contractor best practice, not just meet the legalities. **If you agree, please ask your councillors - and give them some examples.**



Leith Walk advisory sign confusing cyclists, drivers & walkers. And – officially these are only for where a road is fully closed.

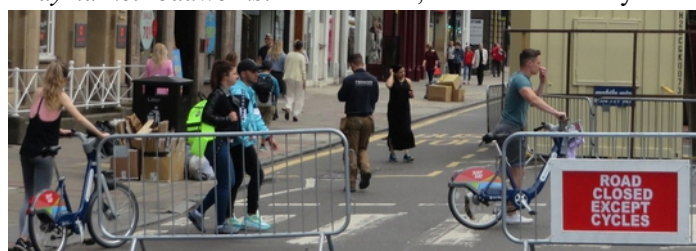
### The points we have suggested include, among others:

- **Road closures** – a cycle route through should be provided in all but exceptional cases. Detours can be dangerous with additional turns and heavy traffic on narrow roads.
- **Temporary traffic lanes** under (say) 4m width should have *Do not Overtake Cyclists* signs.
- **Advisory Cyclist Dismount signs** should *never* be used – their advisory nature is not understood, and the result is to annoy many cyclists, motorists and pedestrians. *Mandatory* signs are undesirable but may be unavoidable in a few cases.
- **Loose chippings** from surfacing should be swept, to avoid dangerous build-ups at bends and elsewhere.
- **Roadworks on cycle paths** – alternative signed safe routes should be provided; not just pointing to the nearest road.

## POSITIVE LOCAL EXAMPLES



Haymarket roadworks: Narrow lane, do not overtake cyclists



George Street: Festival closure, with bike exemption



North Edinburgh cyclepath works: Many contractors would use an (advisory) 'dismount' sign. This is much better and more likely to be followed - though we suggest using 'please.'



## 20 IS PLENTY

Preliminary analysis of Edinburgh's city-wide 20mph scheme, based on first year data, is very encouraging. Indeed there have been so many requests for more of the remaining 30mph roads to become 20mph that all 30mph and 40mph roads will now be re-assessed for reductions. [[edinburgh.gov.uk, news, 7.10.19](http://edinburgh.gov.uk/news/7.10.19)].

- ◆ Speeds in the new 20-limit roads fell by 1.3mph on average and up to 2.4mph in some roads. Generally, the faster a road, the more its speeds fell, so benefits are much greater than the 1.3 average might suggest.
- ◆ Research suggests that a 1% speed cut reduces crashes by some 6%.
- ◆ Crash numbers fell from a 3-year average of 983, down to just 612. This is just one year, and there may be other factors, but it's hopeful.
- ◆ Surveys based on 1200 households found 65% of people supporting 20mph, compared to 58% before roll-out.
- ◆ There was no significant bus delay or traffic diversion.
- ◆ Police have held over 250 operations on 20mph roads, issuing ~1500 warnings and ~100 penalties. Miscreant motorists get 'roadside education' including a video of local children telling them to think what they are doing.



## 20 BILL DEFEATED

Sadly, and despite strong public support, the Bill by Green MSP **Mark Ruskell** to make 20mph the default Scottish urban speed limit, instead of 30, was defeated by conservative voices in Parliament, with the SNP, Tories and Lib Dems combining against. The new Edinburgh report above surely highlights just how wrong they were.

Councils can of course still install area-wide 20mph, as Edinburgh did, but only with massive and costly bureaucracy: which is why both Edinburgh and Glasgow supported the Bill despite the Minister's opposition.

The main 'anti' argument appeared to be that a 20mph default is "one size fits all" – conveniently forgetting that it is no more one size fits all than the current 30 default!

## HOW TO CONTACT POLITICIANS

1. Simplest - find them *all* at [www.writetothem.com](http://www.writetothem.com). Or...
  2. MSPs – you have one constituency MSP and several Regional MSPs. Find them at [scottish.parliament.uk/msps](http://scottish.parliament.uk/msps)
  3. Councillors web+phone below **Who runs the council?**
- |  |               |                    |
|--|---------------|--------------------|
| <a href="http://edinburgh.gov.uk">edinburgh.gov.uk</a>     | 0131.529.3186 | SNP/Lab (minority) |
| <a href="http://eastlothian.gov.uk">eastlothian.gov.uk</a> | 01620.827827  | Lab (minority)     |
| <a href="http://midlothian.gov.uk">midlothian.gov.uk</a>   | 0131.270.7500 | Lab (minority)     |
| <a href="http://westlothian.gov.uk">westlothian.gov.uk</a> | 01506.280000  | Lab (minority)     |

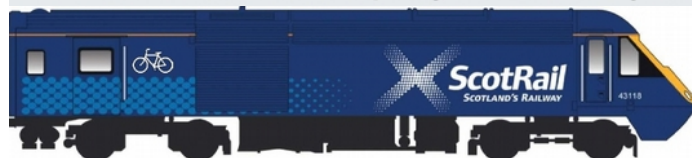
## A PERSONAL VISIT??

Many people email their MSP/councillor, but why not visit their surgery for a chat on issues that concerns you: it could make an even bigger impact! Ask them for time/place.

## 20 REDUCED TO 2 !

Getting bikes north from Edinburgh/Glasgow has long frustrated commuting and tourism. **Transport Scotland** and **ScotRail** had promised a solution with refurbished 4/5-coach High Speed Trains (HSTs/125s) to Inverness/Aberdeen. A 2015 Scottish Parliament presentation told of at least 20 spaces per train compared to the previous 4.

The Class 125s will have a capacity of at least 20 cycles.



**But - gradually the space numbers have been reduced [e.g. Spokes 128] from the promised 20+ to 2, yes, two!!**

Back in 2017 **Liam Kerr MSP** lodged a Parliamentary motion when spaces were cut to 8, 6 of them end-to-end only. Although signed by around 40 MSPs, from all parties except the SNP, the 8 has now been chopped to 2!

Furthermore the 2 bike spaces are the difficult-to-use 'bike hangers'. One passenger told us his train guard was "scathing" about the number and style of bike spaces.

**Please speak to your MSPs if this concerns you - it is a fault of Transport Scotland as well as ScotRail**

## 385 IS BETTER!

The highly-praised new central belt Class 385 electric trains are relatively good for bike space – and, thanks in part to Spokes input, it is well indicated outside and in.

## POLICE #OPCLOSEPASS

Spotted on facebook by @JoeSoap76

Just been pulled by traffic boys in Mauchline, never got done for speeding, they've got a cyclist going through Mauchline (from Cumnock side) fitted with cameras dressed in normal clothes, they are alerting the police parked up at the layby and pulling you in if you are too close to the cyclist 😊

👍👎😬 27

23 comments

## USEFUL CONTACTS

**Suggest bike parking sites:** [activetravel@edinburgh.gov.uk](mailto:activetravel@edinburgh.gov.uk)  
**Adult cycle training:** 668.1996 [info@thebikestation.org.uk](mailto:info@thebikestation.org.uk)  
**Bikes on rail, bus and ferry:** [www.travelinescotland.com](http://www.travelinescotland.com):  
**Potholes, glass on paths, broken lights, in Edinb/Lothian:** [Use lamp-post numbers to report location]. 0800.232323 [www.edinburgh.gov.uk/clarence](http://www.edinburgh.gov.uk/clarence). Or [www.fillthathole.org.uk](http://www.fillthathole.org.uk).  
**Bad glass/dumping [Ed only]** Rapid Response 0808 100 3366  
**Taxi issues:** [licensing@edinburgh.gov.uk](mailto:licensing@edinburgh.gov.uk) [try taxi firm first]  
**Lothian Buses:** [mail@lothianbuses.com](mailto:mail@lothianbuses.com) 554 4494.  
**Dangerous drivers, mobile use, drink-driving, speeding, other road crime:** see [www.spokes.org.uk](http://www.spokes.org.uk) : links : reporting  
**Emotional/practical victim support:** RoadPeace 0208964102

**Help Spokes, other cyclists and yourself by joining us!**

**Download a membership form at [www.spokes.org.uk](http://www.spokes.org.uk)**