

Spokes the Lothian Cycle Campaign 0131 313 2114 [spokes.org.uk](http://spokes.org.uk) [spokes@spokes.org.uk](mailto:spokes@spokes.org.uk) twitter @SpokesLothian  
St Martins Centre, 232 Dalry Road, Edinburgh EH11 2JG - this is a postal address, Spokes is a voluntary body with no staff

## 2020 VISION or REALITY?

If the 2010s was the decade of unimplemented and unending cycling consultations, will the 2020s be the decade of action - at least in Edinburgh?

Signs for 2020 itself look good in Edinburgh, but the rest of the decade depends on the courage with which the Council implements its **City Centre Transformation**, **City Mobility Plan** and **City Plan 2030** [see p6].

### THE WORLD WATCHES EDINBURGH COUNCIL!!

The tweet below by the 'Yes In My Backyard' movement, about Edinburgh's **Mobility Plan**, was liked over 1000 times, including by mayors and planners around the world. So Edinburgh's progress is under serious scrutiny! - and doubtless many of the international delegates coming to November's huge COP26 Glasgow Climate conference will be through to check out Edinburgh.



Central NJ Yimby  
@YIMBY\_Princeton

US 'climate mayors' ought to check this out:  
Edinburgh is planning to go carbon-zero by \*2030\*.  
To make it happen, they are banning personal cars  
from key downtown areas and greatly expanding  
transit. Is your city doing this?

267 Retweets 1.2K Likes

At **Scotland** level, the 20/21 draft budget leaves much to be desired [below]. South of the Border, the **UK** government seems fixated on road expansion, with its climate emergency transport response solely electric vehicles and, when challenged about flying, electric planes!

## CLIMATE EMERGENCY BUDGET?

The Scottish Government's first budget since declaring a Climate Emergency increases active travel cash by just £5m; and %-wise it *falls* to just 2.8% of total transport!

Budget year	AT total	Transport	AT as %
18/19	£80m	£2,395m	3.3%
19/20	£80m	£2,580m	3.1%
May 2019 - Scot Govt declares Climate Emergency [p5]			
20/21	£85m	£2,986m	2.8%

The budget is in draft, with a Feb 27 debate and final vote on March 5. Pressure on MSPs could bring change.

### Inside

- ♦ **Local bike campaigning** .. Spokes public meeting plus centre-page factsheet on local campaigning
- ♦ **Climate wisdom** .. where is it to be found?
- ♦ **Bikes on bus, rail, tram** .. good & poor examples

## EDINBURGH 2020

Here we list **concrete actions** due in 2020, not just plans:

- ♦ Work has begun at York Place on the first short section of **CCWEL** west-east city-centre segregated route [picture].



The Roseburn section has been delayed *over a year* by an arcane government inquiry process triggered by objectors – the inquiry report was due in January but is still awaited.

- ♦ 180 **bike storage units**, each for 6 bikes, to be installed by Cyclehoop, starting April, under a Council contract
- ♦ 120 **e-bikes** for 'Just Eat' Edinburgh Cycle Hire
- ♦ **Cargobikes** supporting Leith Walk businesses during tramline works, as a pilot and an example for the city
- ♦ **Leith Walk** gets a 2-way temporary cycleroute, with cars banned northbound, for the 18 months of tramline work
- ♦ **Open Streets** Old Town road closures first Sunday each month; permanent closures to motor traffic from 2021
- ♦ **Advance cycle traffic lights** at many junctions
- ♦ **Tramline physical safety measures** at South St Andrew Street, S Charlotte Street & Haymarket/Grosvenor Street.
- ♦ **Low Emission Zone** city-wide, with tougher restrictions in city centre – first stages due late 2020.

## MAIN ROAD CYCLING

Arterial routes to the city centre from surrounding areas tend to be direct and the least hilly, but such roads are also the scariest, and the most dangerous per km cycled.

A long-delayed Council study of main road cycle facilities has now begun. Originally we feared this likely to be timid, but we hope the delay means it will align with the draft Mobility Plan [p6], which promises “to *reallocate road space on all arterial routes to improved public transport and dedicated active travel infrastructure.*”



The A7 BioQuarter segregated route, due to open March '22

Help Spokes, other cyclists, and yourself, by contacting your MSPs, MP, councillors and the press periodically. See back page for contacts. Ask them to raise your point with the relevant Minister/Convener. Send us the results!

## FOR YOUR DIARY - see also [spokes.org.uk](http://spokes.org.uk)

**Mar 1-31 Scottish Workplace Journey Challenge** Record your sustainable-mode work journeys – prizes, kudos and glory for individuals and workplaces! [see box below]

### Mar 23 SPOKES PUBLIC MEETING

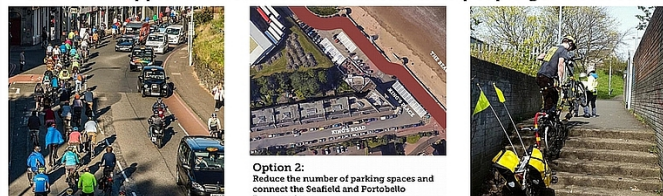
Download poster at [spokes.org.uk](http://spokes.org.uk) or ask for printed copies

**Spring Public Meeting : all welcome : Mon 23 March 2020**

## Local Bike Campaigning

Campaign Group  
Community Council  
Bike Bus  
Demo / protest  
Online community  
Individual campaign

People want decent conditions for getting about by bike – for climate and the environment, for health, for towns and cities not dominated by the car and for a happier life. Find out and discuss how people get involved!!



People involved in bike campaigning will speak for 5 minutes about what they do and why it matters ... followed by a 1-hour panel discussion and Q/A. Background stories in our *Local Campaigning* factsheet [[spokes.org.uk](http://spokes.org.uk) : 22.1.20 blog]

<b>Spokes Planning Group</b> David French	<b>Corstorphine Bike Bus</b> Diana Farrell
<b>Spokes Porty</b> Kirsty Lewin	<b>Drem-Gullane path campaign</b> Iain Monk
<b>Spokes South Edinburgh</b> Stella Thomson	<b>Roseburn support group</b> Henry Whaley
<b>City Cycling Edinburgh, online forum</b> [invited, to be confirmed]	<b>QA / discussion</b> chaired by Spokes member Cllr Scott Arthur

**Starts 7.30 Ends 9.30**

**Doors Open 6.45**

**Augustine United Church, 41 George IV Bridge, EH1 1EL**

**SPOKES**

Along with the meeting we have a new factsheet, *Local Bike Campaigning*, featuring most of the speakers plus other campaigning options such as your local Community Council or your bike shop. The factsheet will be in this printed bulletin and online at [spokes.org.uk/bulletin](http://spokes.org.uk/bulletin).

**Mar 1, Apr 5, May 3, Jun 7 Open Streets** car-free Old Town [www.connectingedinburgh.com](http://www.connectingedinburgh.com) : categories : [Open](#)

**Apr 25, May 30 a.m. Farmers Mkt** Castle Ter, Spokes stall

**May 01-03 Pop-up PoP** [pedalonparliament.org](http://pedalonparliament.org)

**June 6-14 Bike Week 2020** [cyclinguk.org/bikeweek](http://cyclinguk.org/bikeweek)

- ♦ tbc **Spokes Bike Breakfast**
- ♦ **June 11 Spokes Public Mtg** Cross-Boundary routes



Join the  
**Scottish Workplace Journey Challenge**  
1-31 March

Win prizes as you challenge colleagues to travel sustainably to, from and for work.

[scotland.getmeactive.org.uk](http://scotland.getmeactive.org.uk) **sustrans** JOIN THE MOVEMENT

### SPOKES MEMBERSHIP RENEWAL

Members who are due to renew for 2020 will be notified in their mailing. If so, do it now! - see instructions in mailing.

## LEISURE BIKE RIDES

### Spokes Sunday Rides - 'Explore, Dream, Discover!'

First Sun each month, 30-40 miles. Usher Hall, 10am. Under 14s *must* be with an adult. Pub/café lunch or bring picnic. We help at breakdowns and wait for the less-fast. Your bike *must* be in good order. [snowcycle.co.uk](http://snowcycle.co.uk) 445.7073.

**Other Edinburgh rides** - [www.cycling-edinburgh.org.uk](http://www.cycling-edinburgh.org.uk) includes 'very easy' rides, regular rides, weekend rides.

**On all rides** - Please ride considerately and carefully. You are entirely responsible for your own safety.

## SPOKES COMPETITION 2020

### 'My Regular Bike Journey'

Our 2018 & 2019 competitions, seeking personal ideas and experiences [[spokes.org.uk](http://spokes.org.uk), blogs [16.9.19](#), [13.9.18](#)] were so inspiring that we produced factsheets on e-bikes and on cycling inspiration [[spokes.org.uk](http://spokes.org.uk) : documents : advice].

We're doing similar this year, asking about a *regular journey* you make by bike - work, leisure, shopping, taking kids to school or whatever. Tell us *anything you want* about the journey – e.g. its pleasures or frustrations, whether you pootle or speed, or compare going by bike versus car. We want to know what the bike journey means to you, good or bad; not a detailed route guide.

**Don't send entries yet – the competition will be launched in our Summer Bulletin, but start thinking now. We'll publicise winning entries, to inspire other people!**

A prize in our 2019 comp was a £500 voucher towards a cargobike. Prizewinner Hazel now has this Nihola trike for transporting her children – even in the rain!

There may be a similar prize in this year's comp.



## FESTIVAL OF CYCLING

We are really disappointed to hear that EdFoC is unlikely to go ahead in 2020, though it is hoped to return in 2021. EdFoC is a fantastic addition to Edinburgh's cycling year – and to the city's festivals - but is a massive workload for Kim Harding and his small team of dedicated volunteers.

The biggest problem is getting the sponsorship to make EdFoC viable. If you know of businesses or others who would offer significant support, contact [edfoc.org.uk](http://edfoc.org.uk).

### 😊 THANK YOU 😊

*Spokes is funded by donations from our 1000+ members and sales of our unmissable maps. Thus we can speak out without fear or favour, not worried about losing funds.*

**[Join Spokes!](#) Download or phone for application form.**

### SPOKES BULLETIN INFORMATION

**Editor** Dave du Feu **Printer** Barr Printers **Print run** 13,000+ Bulletin text may be used freely, if you credit us and give our website. **Created with** Openoffice.org **Next Issue** May 2020.



## NEW FROM SPOKES

### UPDATED EDINBURGH SPOKES MAP

Due to the popularity of our Edinburgh map, we've had to order a second reprint! We included some revisions - the new Granton coastal route, Shawfair railway path, bike shop list and many small corrections/updates. The map is now in bike shops or see [spokes.org.uk/spokes-maps](http://spokes.org.uk/spokes-maps).

**Note:** This is a revised edition 10. We hope to fully survey Edinburgh then publish a new edition 11 in 2021.

### FACTSHEET - CYCLING INSPIRATION

Stories from our 2019 competition of what inspired people to start cycling, or cycle more, for everyday travel.

### FACTSHEET - LOCAL BIKE CAMPAIGNING

Stories of how people, in a huge variety of ways, campaign for improved cycling conditions.

**Note:** the above factsheets are printed in Bulletins 135/136 respectively and pdfs are available at [spokes.org.uk/bulletin](http://spokes.org.uk/bulletin).

### BROKEN GLASS / BOTTLE DEPOSIT VIDEOS

Spokes worked with [Zero Waste Scotland](http://Zero Waste Scotland) and [Have You Got the Bottle](http://Have You Got the Bottle) to produce videos on how a bottle deposit scheme will reduce cycling dangers and punctures. Our first submission to the government on this was in 1997!



### SPOKES PORTY VIDEOS

Our Portobello group has published videos on the joys of using a bike, and on their PoP ride to show councillors the problems+joys of cycling to school, narrated by the kids.

### PUBLIC MEETING VIDEOS

There's a video of our last public meeting, [New Cycling Solutions for Edinburgh](http://New Cycling Solutions for Edinburgh), storage, e-bikes, cargo-bikes, etc.

**Note:** Find links to all videos above at [spokes.org.uk/videos](http://spokes.org.uk/videos).

## IDEAS & OPPORTUNITIES

### A COP OF COFFEE?

South West Edinburgh police have a drop-in 10.30-11.30 first Mon each month at Corner Cafe, Currie, to discuss anything. Not sure if other police teams do it but seems a good idea! Also follow them on twitter, [@EdinpolSW](https://twitter.com/EdinpolSW).

## THE STORING OF CARS

Whilst the pollution, congestion and sedentariness of widespread individual car ownership is well known, less attention has been paid to the sheer space occupied.

Real Estate Company JLL's Research Director Nick Whitten says we should "persuade people away from highly inefficient private use" and use the space for new housing, cycle routes and car-free zones [Local Transport Today 29.9.19]. In London, the 868 car parks within a mile of tube or rail could provide 80,000 homes, with travel by walk, bike, public transport and car club/share systems.

### FLYING OFF - COMPANIES

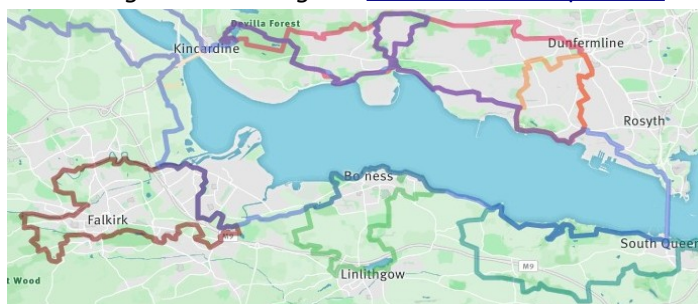
Reducing or eliminating flying is a very effective way for individuals and companies to cut their carbon footprint. Now 30 companies have signed up to [ClimatePerks.com](http://ClimatePerks.com), where employers offer paid 'journey days' to staff who holiday by rail (or bike?) instead of plane. Ask your boss to sign up and build their reputation as a climate leader!

### FLYING OFF - INDIVIDUALS

If you as an individual decide not to fly in 2020 (and 95% of the world's people never have!) see [flightfree.co.uk](http://flightfree.co.uk) (email [info@flightfree.co.uk](mailto:info@flightfree.co.uk)). They also have a local group. There's some lovely ideas for flight-free holidays by rail, bike, ferry, etc at [inews.co.uk](http://inews.co.uk) [search Flight Free 2020].

### FORTH ESTUARY LEISURE BIKE ROUTES

A set of 9 'heritage trails' around Stirling, Falkirk, Fife, West Lothian etc, accessible from rail stations, has been published with website pdf's and GPX for phones. See *Wanderings and Windings* at [innerforthlandscape.co.uk](http://innerforthlandscape.co.uk).



### BRIDGEND BIKING (AND E-BIKING)

[Bridgend Inspiring Growth](http://Bridgend Inspiring Growth) is a community owned charity based at Bridgend Farmhouse, 41 Old Dalkeith Rd. Their many activities include family bike rides, a bike workshop and even advice/help to convert your bike to an e-bike! Naturally, there's a cafe too! [bridgendfarmhouse.org.uk](http://bridgendfarmhouse.org.uk).

### EAST OR WEST - BOTH ARE BEST!

We love to hear of bike-friendly stop-off points...

#### Going East?

[Lanterne Rouge](http://Lanterne Rouge), Gifford, Main St, is Cycling UK's top Scottish bike-friendly cafe. Sheffield racks, bike spares - and donating a prize to our 2019 competition. Oh yes, the food is praised too!



#### Going West?

[The Bridge Inn](http://The Bridge Inn) Ratho tweeted.. "It's cold on the towpath! Cyclists, you're welcome to pop in if you need a bathroom break or to fill up your water bottle; we'll look after you."

Many cities, such as **Oslo** and **Amsterdam** are already implementing such policies. **Utrecht** plans a 24-hectare city district, Merwede, with shops, businesses, parks and homes for 12,000 people, high quality cycling, walking and public transport, plus car-share options - but *no private car spaces*, either at homes or in public places [Dutch Urban Cycling Institute, [@fietsprofessor](https://twitter.com/@fietsprofessor), 9.1.20 tweet].

**Paris Mayor** Anne Hidalgo, for her re-election campaign, promises to cut 60,000 of the 83,500 onstreet car spaces, converting to walking, cycling, stalls, play, even veg plots! Another aim is a "quarter-hour city" - everyone 15mins walk/cycle from all daily needs [[@carltonreid](https://twitter.com/@carltonreid) tweet 29.1.20].



**CYCLE LAW™**  
Scotland

**SCOTLAND'S SPECIALIST,  
POST-ACCIDENT SERVICE  
FOR CYCLISTS, BY CYCLISTS**

Visit: [cyclelawscotland.co.uk](http://cyclelawscotland.co.uk)  
Call: 0333 555 7783  
Text: "CLS" to 60155

**FOR  
CYCLISTS  
BY CYCLISTS**

## COMING SOON !!!

Some 15 hardy Spokes volunteers have been surveying Midlothian through the depths of winter, so you can have a fully updated version of our already highly-praised Midlothian cycle map – also used by walkers. The new edition will be on water- and tear-resistant paper. Expected early summer.

For more info about Spokes maps, see [spokes.org.uk](http://spokes.org.uk) : [spokes.maps](http://spokes.maps).

Do check out the Feedback section!

A strong and durable all-weather map specially designed for cyclists

## Midlothian Cycle Map



1:50,000 (approx)  
3.3 cm to 1 km  
2 inches to 1 mile

For route planning and use on the road  
For experienced cyclists and those just starting  
Off-road paths  
Suggested quieter roads  
Places of interest  
Cyclists street plans of the main towns

**SPOKES**  
The Scottish Cycle Campaign

Draft cover, not final

## All sorts of bikes for all sorts of journeys

**EST Loans Available** **one size fits all** **includes FRAME LOCK**

**Shimano Steps**

**CIRCE HELIOS TANDEM** with cargo options  
E-version available. Multi-person, multi-use

**NIHOLA E-BIKE** - full Danish design, airshock, lights, discs, stand, rack, 700c

**URBAN ARROW™** - best selling powerful Bosch assist family & cargo

**Making light work of cargo**

Open 10-6 Saturday  
By request other days

**Laid Back** 14 St Peter's Place, Edinburgh EH3 9PH

[laid-back@blueyonder.co.uk](mailto:laid-back@blueyonder.co.uk) 07981 430159 [www.laid-back-bikes.scot](http://www.laid-back-bikes.scot)

Gazelle Orange C8 HMB eBike

**KONINKLIJKE Gazelle**

Hart's Cyclery is Edinburgh's exclusive Gazelle dealer!

The best city and utility bikes in the world, including Gazelle's extensive range of electric bikes, available right here.

253 St John's Road, Edinburgh, EH12 7XD 0131 334 1441

[HARTS-CYCLERY.CO.UK](http://HARTS-CYCLERY.CO.UK)

**HART'S CYCLERY**

[edinburghcyclehire.com](http://edinburghcyclehire.com)

# Just Eat Cycles

**E-bikes**

Available to hire through  
Edinburgh's cycle hire scheme  
from March 2020

**Transport for Edinburgh**

# EDINBURGH BICYCLE COOPERATIVE

BRUNTSFIELD | CANONMILLS | ONLINE  
[WWW.EDINBURGH BICYCLE.COM](http://WWW.EDINBURGH BICYCLE.COM)

bikes & electric bikes | clothing & accessories | servicing & repairs

# Allan McDougall

SOLICITORS

Expert legal advice for cyclists

0808 560 0872

[allanmcdougall.co.uk](http://allanmcdougall.co.uk)

With you every  
pedal of the way



# NATIONAL & GLOBAL

Growing weather extremes in Britain and around the world have convinced the public that the science is right - the climate crisis is real and action is urgent.

Climate concern is a growing reason for going by bike, especially for women [[Scotsman 15.1.20](#)]. Entries in our 2019 comp suggested similar [[spokes.org.uk, 16.9.19](#)].

Britain in 2019 experienced its hottest day ever, 38.7C on 25 July, and hottest ever winter day, 21.2C on 26 Feb, whilst the hottest ever December day hit 18.7C at Achfary in the Scottish Highlands.

Severe floods and wildfires were experienced in many countries but Australian fires reached a level never before seen, with (so far) an area 10 times that of the Amazon fires devastated, over 3000 homes destroyed, severe weeks-long smoke pollution in Sydney and Canberra, a *billion* vertebrate animals killed - and far more invertebrates.

[search for *australians* at [thebulletin.org](#)]



## WHERE IS WISDOM TO BE FOUND?

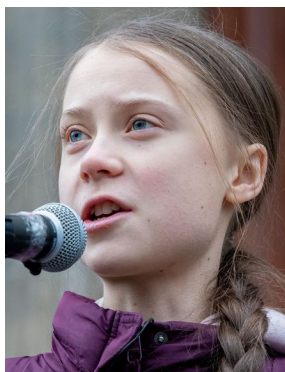
### THE WISDOM OF AGE

*"We have been putting things off year after year, raising targets ... we can't go on leaving it to next year ... the moment of crisis has come, we can no longer prevaricate ... we have to change by deliberate, life-or-death decisions."* **David Attenborough**  
BBC interview 16.1.20



### THE WISDOM OF YOUTH

*"I don't want you to listen to me, I want you to listen to the scientists ... to unite behind science. And then to take real action."* **Greta Thunberg**  
Testimony to US Congress 18.9.19



### THE WISDOM ?? OF GOVERNMENTS

**UK Ministers:** £29bn road budget and continuing growth in flying is fine – electric planes will solve it! [Secretaries of State for Transport, **Grant Shapps MP**, and for Health, **Matt Hancock MP**, in BBC interviews].

**Scottish Ministers:** The £6bn A96+A9 dualling and the £120m Sheriffhall flyover will continue [Scottish Budget]. [Transform Scotland](#) says *"this is a modestly-tweaked business-as-usual budget ... Until the roads programme is fundamentally reviewed, Scottish Ministers are in no way playing their part in tackling the Climate Emergency."*

**Are Governments listening? If you think not, ask your MSPs (Scotland) or MPs (UK) to speak to Ministers.**

## CLIMATE EMERGENCY QUOTE

*"This Scottish Government will place climate change at the heart of everything we do. I can confirm that it will be at the core of our next ... Spending Review"*

Climate Change Secretary, **Roseanna Cunningham MSP**, in the government's [Climate Emergency declaration, 14.5.19](#)

## WHAT THE EXPERTS SAY

Governments set up expert committees to assess evidence and propose actions. Is Scotland's government listening?

NB: extracts below are abbreviated to fit.

**UK CLIMATE CHANGE CTTEE** [theccc.org.uk](#)

♦ *Targets do not themselves reduce emissions any more than speed limit signs make all drivers slow down*

♦ *Scotland's 2030 target is extremely stretching and demands new policies that start to work immediately*

♦ *Distance travelled by road in Scotland increased steadily since 2011. So despite efficiency improvements road emissions continued rising.*



**INFRASTRUCTURE COMMISSION** [infrastructurecommission.scot](#)

[Especially pp 60, 108, 109 of the [Key Findings Report](#)]

♦ *Transport planning decisions should focus initially on (i) demand management/reduction, then (ii) increased active travel, then (iii) increased public transport*

♦ *Strategic investment decisions must fully address demand management, a substantial increase in active travel's proportion of journeys, opportunities for shared mobility and a much greater role for public transport*

♦ *Presumption that (road) investment is to future-proof existing road infrastructure and make it safer, resilient and more reliable rather than to increase road capacity*

♦ *If new road capacity (e.g. bypasses) is deemed necessary ... it must include broadly equal capacity reduction for private vehicles on the existing network*

♦ *A binding national target for road traffic in Scotland ... with targets for each 5-year milestone.*

### CLEANER AIR FOR SCOTLAND STRATEGY REVIEW

[gov.scot/publications, 29.8.19](#)

[7.20] *Additions to the Trunk Road and Motorway network should be significantly de-prioritised and ideally end within the next five or so years*

[7.19 & T5] *Scrappage of polluting vehicles does not have to mean replacement with new motor vehicles*

[para 7.9] *Current funding for active travel is insufficient for transformative change.*

## CAN YOU BELIEVE IT?

The '[Carbon Assessment](#)' of the draft 20/21 budget shows that CO2 emissions from health and sport spending are roughly twice those from transport!! Here's why...

The assessment covers only the emissions from spending the budget, so it covers road building, but not road use! Whole-life emissions are considered at other stages of policies and projects, but not in the budget assessment.

# EDINBURGH COUNCIL

If anything on this page concerns or encourages you, contact your councillors. See p8 or [edinburgh.gov.uk/councillors](http://edinburgh.gov.uk/councillors)

## 2030 AMBITIONS

Three policy documents will shape Edinburgh over the next 10 years and beyond. If implemented bravely, they point to a more cycle, walk and public transport-friendly city, with greatly reduced car dominance and cleaner air.

Alongside the **City Centre Transformation Plan**, approved in 2019 [[Spokes 135](#)], the Council is now consulting on the **Mobility Plan** (city-wide transport policies) and the **City Plan 2030** (land-use policies).

### MOBILITY PLAN This includes...

- ◆ **By 2022** Completion of currently planned segregated routes: CCWEL, Meadows-Canal, West Ed Link, Bioquarter to Dalkeith Rd, Leith Walk, Meadows-George St (May '23).
- ◆ **By 2025** Detailed plan to reallocate road space on all arterial routes to improved public transport and dedicated active travel infrastructure. This plan needs to be sooner – though some routes, e.g. above, will be built before then.
- ◆ **By 2030** Tram extended to Bioquarter and Newbridge; and city centre 'largely car-free.'
- ◆ **Other policies include** ... Workplace parking levy, goods micro-distribution hubs, further speed limit reductions.



The **City Centre Transformation** has further city centre projects – work has already started on initial options for Lothian Road 'boulevard,' the Old Town-Leith Walk cycle bridge [[Spokes 134](#)] and central area pedestrian priority.

### CITY PLAN 2030

This is the land-use plan, but that of course is intricately linked to transport. Indeed a central and crucial stated policy is “a city where you don't need to own a car.”

The consultation is laid out as “choices”, including...

- ◆ Choice 6 Places focussed on people, not cars
- ◆ Choice 7 Reducing car traffic
- ◆ Choice 8 New walking and cycling routes.

Unlike the Mobility Plan, the City Plan does not mention arterial routes, other than a very welcome A71 route, Livingston to West Edinburgh - which is not explicit in the Mobility Plan! The two documents need to be more compatible and clear on all arterial routes.

### WHAT YOU CAN DO – by 27 March

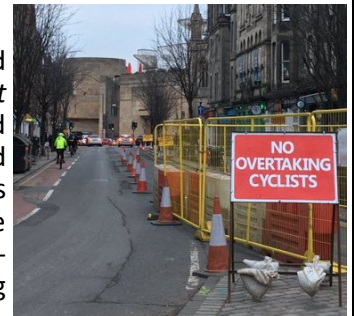
If you support these draft plans, it is really important to reply to the consultations - there will also be opponents!

We urge you to express overall strong support even if you are also suggesting improvements such as above. We also hope to email members with further ideas/comments.

Find the consultations at [consultationhub.edinburgh.gov.uk](http://consultationhub.edinburgh.gov.uk).

### CYCLISTS DISMOUNT??

In Spokes 135 we deprecated advisory *Cyclist Dismount* signs, often used lazily and inappropriately. We pictured alternatives used sometimes by Edinburgh Council and we urged a best-practice fact-sheet. Here's another, during Forrest Road gas works.



### ROAD RENEWALS POLICY RENEWED

Spokes has consistently pressed for higher active travel priority in major road resurfacings. Slowly, policy has improved and we are starting to see the results.

There is now a '**cycle weighting**' giving (slightly) higher priority for roads with heavier cycle use. Example - this advanced Whitehouse Loan resurfacing by 2 years.

Secondly, **road resurfacing projects must now consider including walk/cycle improvements**. Example – picture.



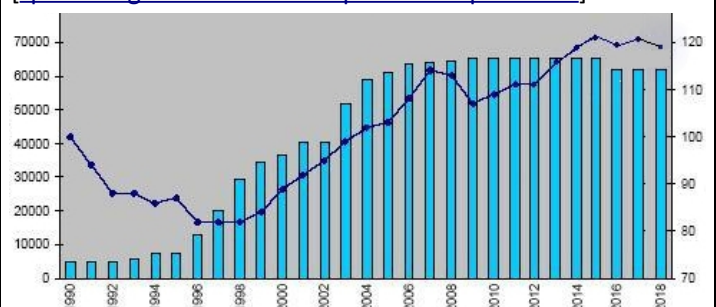
*A segregated lane appearing on part of Portobello Road - thanks to a resurfacing scheme, not a cycle project as such*

Big cycle improvements also expected on **Gilmerton Road** and, very exciting, a contra-flow lane from **Bread Street** to **Morrison Street**, all as part of resurfacing projects. However new facilities often mean a Traffic Order, which causes a 9-12 month delay. This can rule out facilities if there is rapid road deterioration and surfacing is urgent.

### 'BUILD IT AND THEY WILL COME'

Yes, it's true for segregated bike routes; sadly also for new roads, and as this remarkable graph shows, it also works for Edinburgh bus lanes! Note also that the 'effective' length of bus lanes was cut further in 2015 when the last Council inexplicably scrapped bus lane operation at weekends and offpeak [[spokes.org.uk/30.10.16.blog](http://spokes.org.uk/30.10.16.blog)].

We are delighted that the present council is now looking into 7-7-7 operation, i.e. 7am-7pm, 7 days a week. [[spokes.org.uk : documents : publictransport : bus](http://spokes.org.uk/documents/publictransport/bus)].



Edinburgh bus patronage v. length of bus lanes

Bus Patronage (million trips) – blue bars, right axis

Total Bus Lanes Length (metres) – blue line, left axis



## SCHOOL NEWS

### CAR-FREE NEW PRIMARY SCHOOL

Canaan Lane school, due to open in 2021 with 460 primary and 80 nursery places, will have zero car or drop-off spaces and 86 bike/scooter places (blue badge parking is nearby). The objectives are to boost pupil health by encouraging active travel and reducing pollution, and to support the Council's 2030 carbon-neutral policy.

### EDINBURGH SCHOOL BIKE-BUSES

Several Edinburgh bike buses continued through the winter and are now a regular, loved and highly anticipated feature of school life. We listed all existing schemes, and guidance for setting up new ones, in [Spokes 135](#). Diana Farrell, [Corstorphine bike bus](#) organiser, is a speaker at our [March 23 public meeting](#) [p2].



James Gillespie  
Wee Unicorns bike bus  
photo: algo, CCE forum

### SAFE ROUTES MOTION

Following a Duddingston Parent Council deputation, the Transport Committee passed an important [motion on cycling to school](#) by [Cllr Claire Miller](#) (a Spokes member) on 11 October 2019. Encouragingly, the motion was expanded by the SNP/Labour coalition to include secondary as well as primary schools. The motion confirms that the Council's forthcoming [Active Travel Action Plan](#) revision will include safe routes to school actions and says that all new schools must have safe walk/cycle to school, including onroad measures.

### DUDDINGSTON ROAD

The above deputation called for a cycle network linking St John's and Duddingston primaries with Portobello and Holyrood high schools. A preliminary Council study has already confirmed Duddingston Road segregation feasibility, and it is included in the Council's city-wide review of main road cycle facilities. However, funding has not yet been allocated – speak to your councillors if this matters to you! Also, to connect to Holyrood High (and the Innocent path) Duddingston Road West needs to be included.

### STIRLING SCHOOL BIKE HIRE

Cycling rates fall when pupils move from primary to secondary. A [2018 Sustrans survey](#) found 1.4% of secondary students 'normally' cycled to school, compared to 5.2% at primaries.

To tackle this, Forth Environment Link is running a 1-year trial, [Schools Bike Share](#), taking the City's Nextbike cycle hire scheme into Stirling's four high schools.

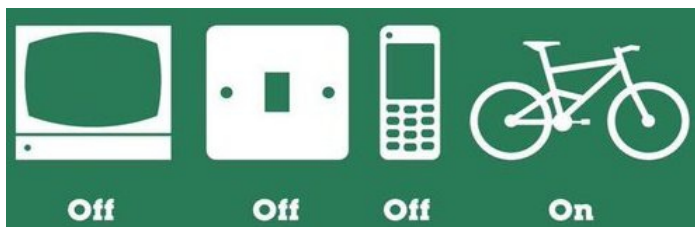


Stirling Schools Bike Share  
photo: Scotsman

Interested students do 3.5 hours of classroom and onroad training then, if successful, they are given a 1-year Nextbike membership allowing free use for each first hour. There is a bike station at each school, and 30 or so others around the city [search [nextbike](#) at [stirling.gov.uk](#)].

We wonder if the schools scheme may also give all pupils a greater appreciation of bike hire as a whole and so reduce the danger of vandalism and misuse by young people which has affected Edinburgh's system [[spokes.org.uk](#), [20.11.19 public meeting blog](#)].

## THE TRULY SMART HOME



### E-BIKE ---> GP-BIKE

The Spring sees 120 e-bikes added to Edinburgh's *Just Eat Cycle Hire* scheme. They could transform not only personal lives, but also companies and public services!

Our 2018/2019 competitions have already shown the massive difference that e-bikes can make to **individuals**, even some who have not cycled for decades [search for [inspiration](#) and for [e-bikes](#) at [spokes.org.uk](#)]. Now we read of how they have benefited and inspired a **public service**, Clackmannan & Kincardine Health Centre. The Centre was loaned an e-bike by Stirling Cycle Hub, [[stirlingactivetravelhub.org](#)] with these exciting results..

*All the doctors and a few admin staff had a go, and they absolutely loved it! The bike was well used for house calls - quicker than taking the car (most house calls are only a couple of miles away), easier to find addresses, and never a parking problem. They even found that if they had a spare half hour they could have a quick blast to blow the cobwebs away and get some fresh air. Also, many patients saw the doctors riding, showing ebikes as a fun, accessible way to get more active. And that was mid-winter, so it will be really great for summer house calls! The practices now each intend to buy their own ebike.*



Dr Rachel Mooney of the Health Centre  
photo: Alloa Advertiser

### (MUCH) BETTER THAN AVERAGE

Can speeding and casualties be cut rapidly and drastically? Policing is costly and inevitably intermittent. But there is an almost magic solution – **average speed cameras**. They can't be used everywhere, but where they can the results are often stunning.

Originally for trunk roads, Scotland's first urban trial, Edinburgh's **Old Dalkeith Road**, is so successful that the police are assessing 25 other city roads for possible implementation [[BBC News 4.9.19](#)]. Before the cameras, 60% of drivers broke the 30mph speed limit. Now the average speed is 25.6mph, with virtually no offenders. Casualties are down, from six in the three 'before' years, to zero in the first full year of the cameras [[search for Dalkeith](#) at [safetycameras.gov.scot](#)].



## BIKE + RAIL/BUS/TRAM

Not all cyclists need to take their bike on public transport but for many it's a hugely valuable option, expanding the types and ranges of journeys which can be made by bike – for work, for leisure and sometimes in emergencies.

In 5 years of Spokes twitter, our most popular tweet by far *on any topic* [175 retweets] was our 2016 revelation that Oban bookable bike spaces might be cut to two - a campaign which helped influence the fantastic decision to introduce bike carriages this summer [Spokes 132].

Second most popular tweet was the desperate 2017 news that HST Inverness/Aberdeen trains would get only 2 spaces instead of the 20 promised to Parliament – now a huge problem for cyclists and train guards [Spokes 135].

**For this Bulletin there's some great bus news - but disappointing rigidity on rail (LNER) and Edinburgh Tram.**

### ☺ BORDERS BIKE BUSES

Borders Buses [[bordersbuses.co.uk](http://bordersbuses.co.uk)] have installed internal racks for 2 or 4 bikes on the following services...

- ◆ X62 Galashiels-Peebles-Edinburgh
- ◆ X95 Carlisle-Hawick-Galashiels-Edinburgh
- ◆ 253 Berwick-Dunbar-Haddington-Edinburgh



This follows a successful 2019 trial. So far, 20 buses have bike racks and all new buses will have them too.

The Borders Bus app confirms which buses have racks, although we don't think you are told if they are occupied. However, their website needs updated on scheme details.

Several Spokes members have reported using the buses with bikes, and all were full of praise for Borders Buses!

### ☹ LNER RIGIDITY

Whilst the need for bike booking on certain rail services is clear (e.g. for holidays and lines with few bike spaces) flexibility and discretion are essential. Even more so for LNER whose website [[lner.co.uk](http://lner.co.uk)] proudly proclaims...

*"We're not afraid to do things differently. If there's a better way, we find it ... We make it happen."*

Sadly, LNER couldn't have found a much worse way for Dr Graham Mackenzie, hoping to travel home from Kirkcaldy to Edinburgh for a sleep between two 12-hour hospital night shifts. Despite there being *4 empty bike spaces* and *no intermediate stops*, and despite explaining his position he was turfed off due to having no bike reservation.

Dr Mackenzie's tweet about this resulted in a massive twitter storm, with over 250 likes and 70 replies with ideas, sympathy and similar experiences. A formal complaint has now been lodged with LNER - see [[twitter.com/gmacscotland/status/1219675147336134660](https://twitter.com/gmacscotland/status/1219675147336134660)] and we understand LNER is considering changes as a result!

### ☹ TRAM RIGIDITY

Spokes is the first to praise Edinburgh Trams - the only UK tram so far to carry bikes on regular scheduled services, albeit it is common in Europe/USA. In particular, several people told us how valuable this was in an emergency.

Following a successful 2016 trial, thanks to Cllr Hinds, the policy is flexible: bikes can be taken *at any time* subject to the attendant's discretion. This understandably affects many peak-time and big-event services - but most users, attendants and Council staff wrongly think there is a total ban. Official text is unhelpful: *"Restrictions apply on peak services"* [[edinburghtrams.com/contact/tram-accessibility](http://edinburghtrams.com/contact/tram-accessibility)] but Edinburgh Trams is unwilling to adopt clearer wording.

In one recent case a user on his way to a meeting in wet weather was forbidden entry to an almost empty tram at St Andrews Square at 9.10am. Hurrying to his meeting, he then skidded and fell on the wet rails at Haymarket. Whilst this crash was not 'caused' by the attendant's false belief that bike carriage was banned until 9.30, the victim would otherwise have been happily at their meeting rather than lying shaken on the wet road at Haymarket.

### HOW TO CONTACT POLITICIANS

1. Simplest - find them *all* at [www.writetothem.com](http://www.writetothem.com). Or...
2. MSPs – you have one constituency MSP and several Regional MSPs. Find them at [scottish.parliament.uk/msps](http://scottish.parliament.uk/msps)
3. Councillors web+phone below **Who runs the council?**  

<a href="http://edinburgh.gov.uk">edinburgh.gov.uk</a>	0131.529.3186	SNP/Lab (minority)
<a href="http://eastlothian.gov.uk">eastlothian.gov.uk</a>	01620.827827	Lab (minority)
<a href="http://midlothian.gov.uk">midlothian.gov.uk</a>	0131.270.7500	Lab (minority)
<a href="http://westlothian.gov.uk">westlothian.gov.uk</a>	01506.280000	Lab (minority)

### A PERSONAL VISIT??

Many people email their MSP/councillor, but why not visit their surgery for a chat on issues that concerns you: it could make an even bigger impact! Ask them for time/place.

### USEFUL CONTACTS

**Suggest bike parking sites:** [activetravel@edinburgh.gov.uk](mailto:activetravel@edinburgh.gov.uk)  
**Adult cycle training:** 668.1996 [info@thebikestation.org.uk](mailto:info@thebikestation.org.uk)  
**Bikes on rail, bus and ferry:** [www.travelinescotland.com](http://www.travelinescotland.com):  
**Potholes, glass on paths, broken lights, in Edinb/Lothian:** [Use lamp-post numbers to report location]. 0800.232323 [www.edinburgh.gov.uk/clarence](http://www.edinburgh.gov.uk/clarence). Or [www.fillthathole.org.uk](http://www.fillthathole.org.uk).  
**Bad glass/dumping [Ed only]** Rapid Response 0808 100 3366  
**Taxi issues:** [licensing@edinburgh.gov.uk](mailto:licensing@edinburgh.gov.uk) [try taxi firm first]  
**Lothian Buses:** [mail@lothianbuses.com](mailto:mail@lothianbuses.com) 554 4494.  
**Dangerous drivers, mobile use, drink-driving, speeding, other road crime:** see [www.spokes.org.uk](http://www.spokes.org.uk) : links : reporting  
**Emotional/practical victim support:** RoadPeace 0208964102

**Help Spokes, other cyclists and yourself by joining us!**

**Download a membership form at [www.spokes.org.uk](http://www.spokes.org.uk)**