

At column numbers circled in red, the following signs should be erected onto the columns to highlight the crossing points of nursery children accessing the forest kindergartens across the city:

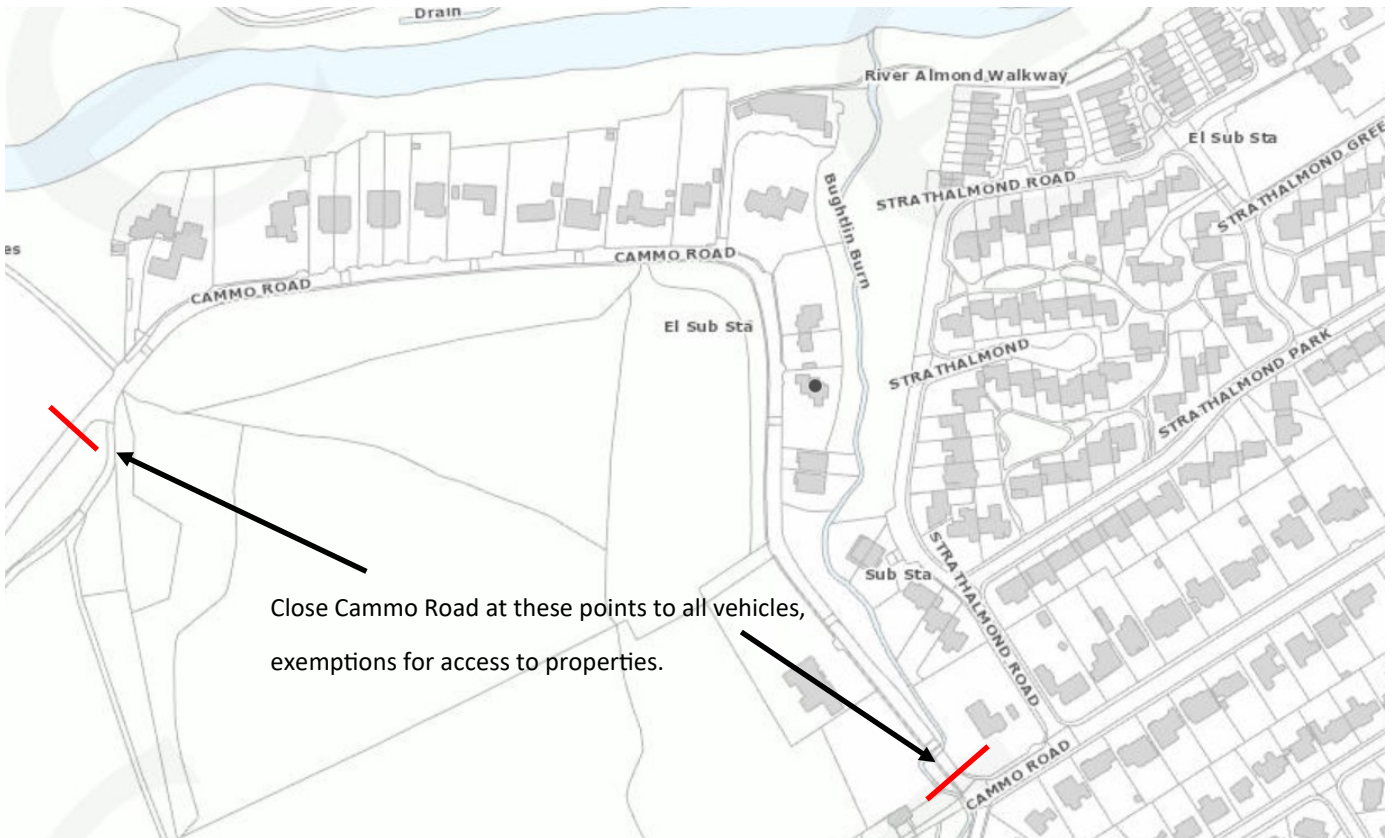
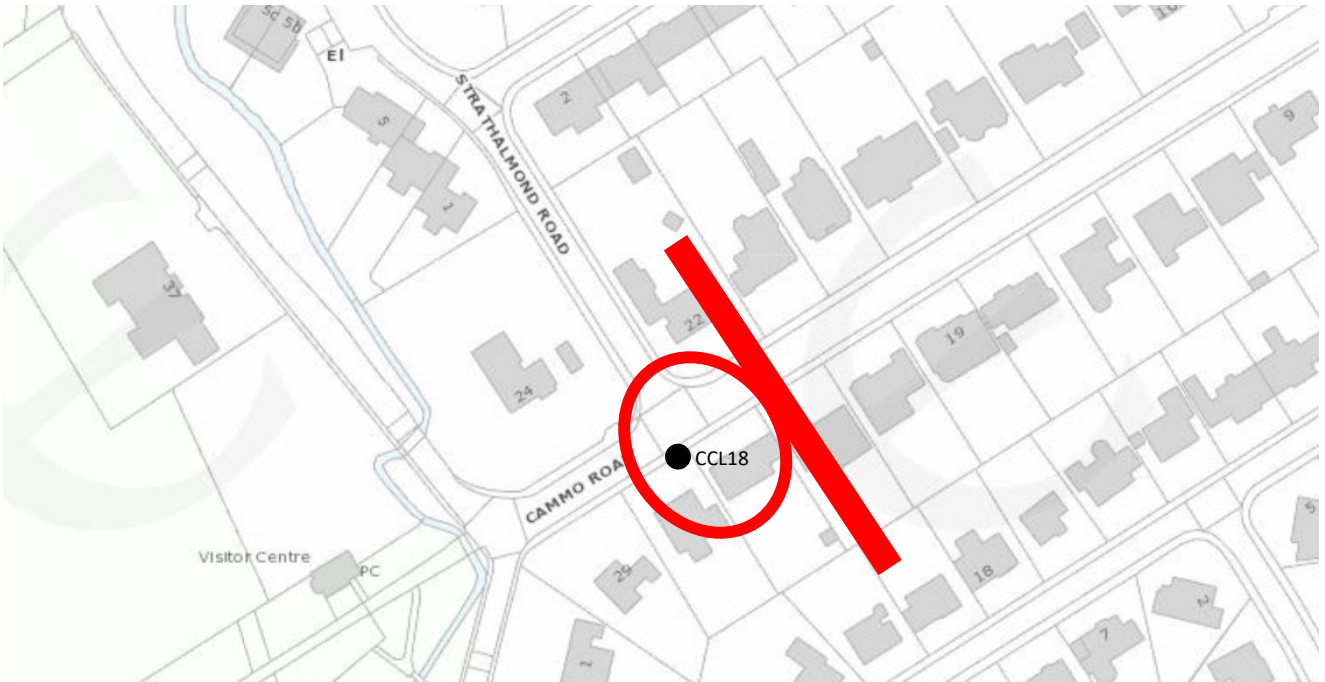


**Figure 8-6** Diagram 545 (S2-2-25) Children going to or from school or playground ahead



**Figure 8-7** School ahead (S2-2-25)

## Cammo Road



Close Cammo Road at these points to all vehicles,  
exemptions for access to properties.