

# CENTRAL SECTION - ACTIVE TRAVEL IMPROVEMENTS

## 1. WHAT WE KNOW

We have engaged with local residents, stakeholders and members of the public in May and September in 2018, and in May in 2019.

The previous engagement has told us...

- Overall levels of support for segregated cycle routes in the area, with 70% of respondents in support
- Support for improved crossings on the route
- In Gogarloch and South Gyle the preferred method of parking control is a Resident Priority Parking Area (RPPA), with 48% of residents in support of this method.

## 2. YOU SAID - WE DID

### Key Design Changes...

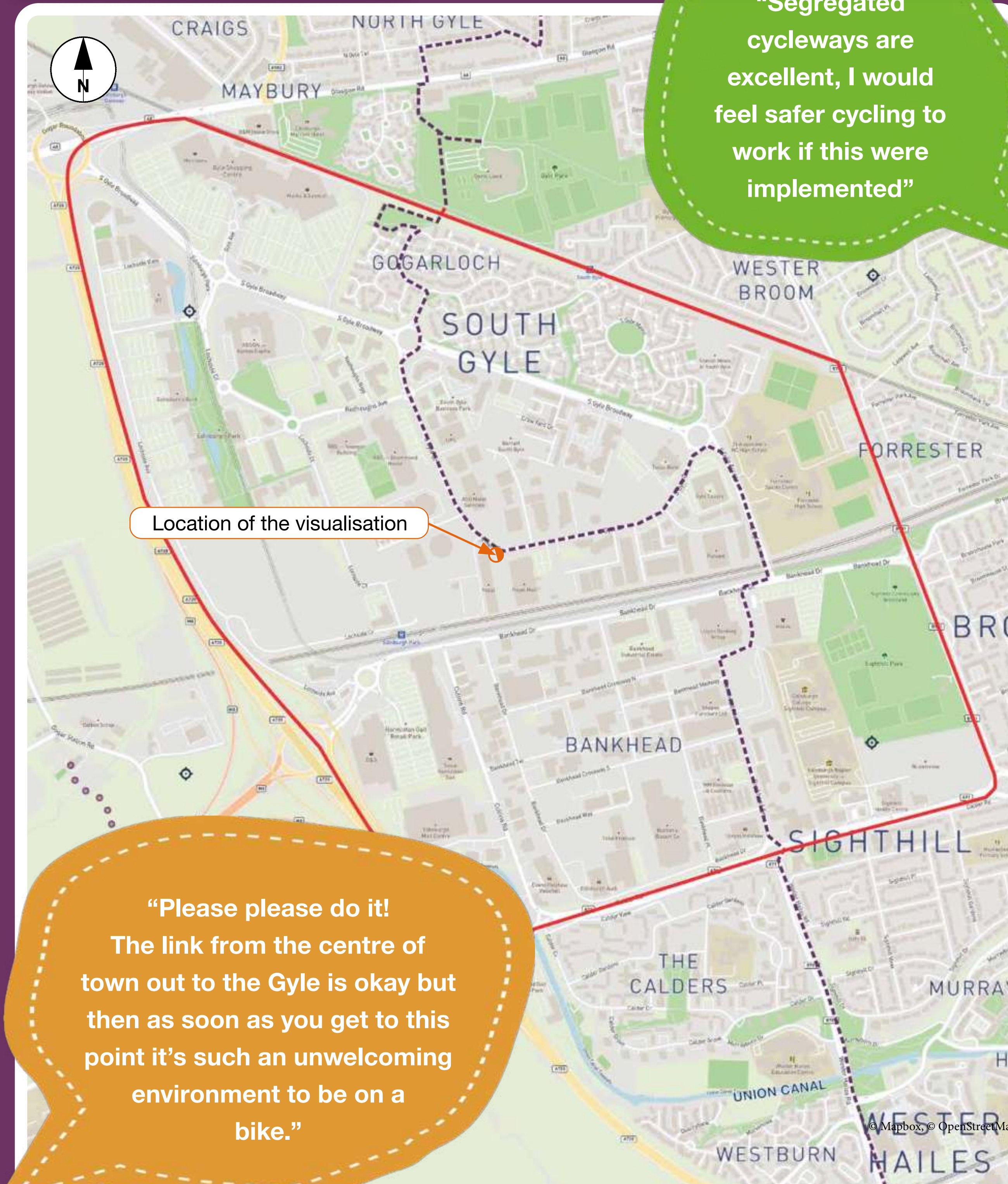
The pedestrian crossings at the roundabouts on South Gyle Broadway have been moved slightly.

Informal crossing points have been added on South Gyle Crescent and a Zebra crossing has been added at the local centre.

A Zebra crossing has been added across Bankhead Avenue at the access to Edinburgh College.

Local residents told us that they prefer a RPPA in Gogarloch and South Gyle. Our designs have included the changes needed to do this.

## MAP OF CENTRAL SECTION



How it could look - South Gyle Crescent visualisation





# GOGARLOCH AND SOUTH GYLE- RESIDENTS PRIORITY PARKING AREA

## 1. WHAT IS A RESIDENTS PRIORITY PARKING AREA?

A RPPA is a parking restriction that operates part-time in a defined area. The restriction operates for a short time period daily Monday to Friday inclusive. Only permit holders can park between the restricted times e.g. 11am-1pm.

Permit places are limited, but will usually meet the residential demand for parking in each street during working days.

The RPPA will consist of permit parking places only, limited to use by:

- Resident Permit Holders who live in the defined RPPA;
- Visitor Permit Holders, where the resident issuing the Visitor Permit resides within the RPPA;
- Trades Permit Holders;
- Blue Badge Holders;
- Formal deliveries and pick-ups by delivery

## 2. WHY HAVE A RESIDENTS PRIORITY PARKING AREA?

- Prevent all-day commuter parking and long-term non-residential parking from taking place within areas designated as permit holder parking
- Demand for parking from commuters could increase in future due to changes to parking on South Gyle Crescent, Workplace Parking Levy and developments in west Edinburgh.
- Protect parking opportunities for resident and visitor permit holders
- Make it easier for residents to park near their homes
- Provide improved parking opportunities for visitors (to residents, businesses etc), tradesmen, etc.

Map of developments in West Edinburgh



## 3. DETAILS / FAQ

### How much will a permit cost?

The proposed cost of a residents permit will be dependent on engine size/ CO<sub>2</sub> emissions and increased for a second permit. Please refer to the table at the bottom of this page for guidance (\*prices from April 2019).

### Am I eligible for a permit?

To be eligible for a resident's permit you must both live and have a vehicle registered at an address within the restricted areas. Whilst each household would be entitled to apply for a maximum of two permits, only one permit can be held per person.

Bands		1	2	3	4	5
Engine Size (cc)		0 to 1000	1001 to 1800	1801 to 2500	2501 to 3000	3001+
CO <sub>2</sub> (g/km)		0 to 100	101 to 150	151 to 185	186 to 225	226+
Permit 1	3 Month Permit	Not Applicable	£16.50	£18.50	£22.00	£31.50
	6 Month Permit	Not Applicable	£26.00	£29.00	£36.50	£52.50
	12 Month Permit	£11.50	£33.00	£38.50	£50.00	£80.00
Permit 2	3 Month Permit	Not Applicable	£27.00	£29.00	£33.50	£44.00
	6 Month Permit	Not Applicable	£39.50	£43.50	£50.00	£73.50
	12 Month Permit	£15.00	£44.00	£50.50	£62.50	£100.00

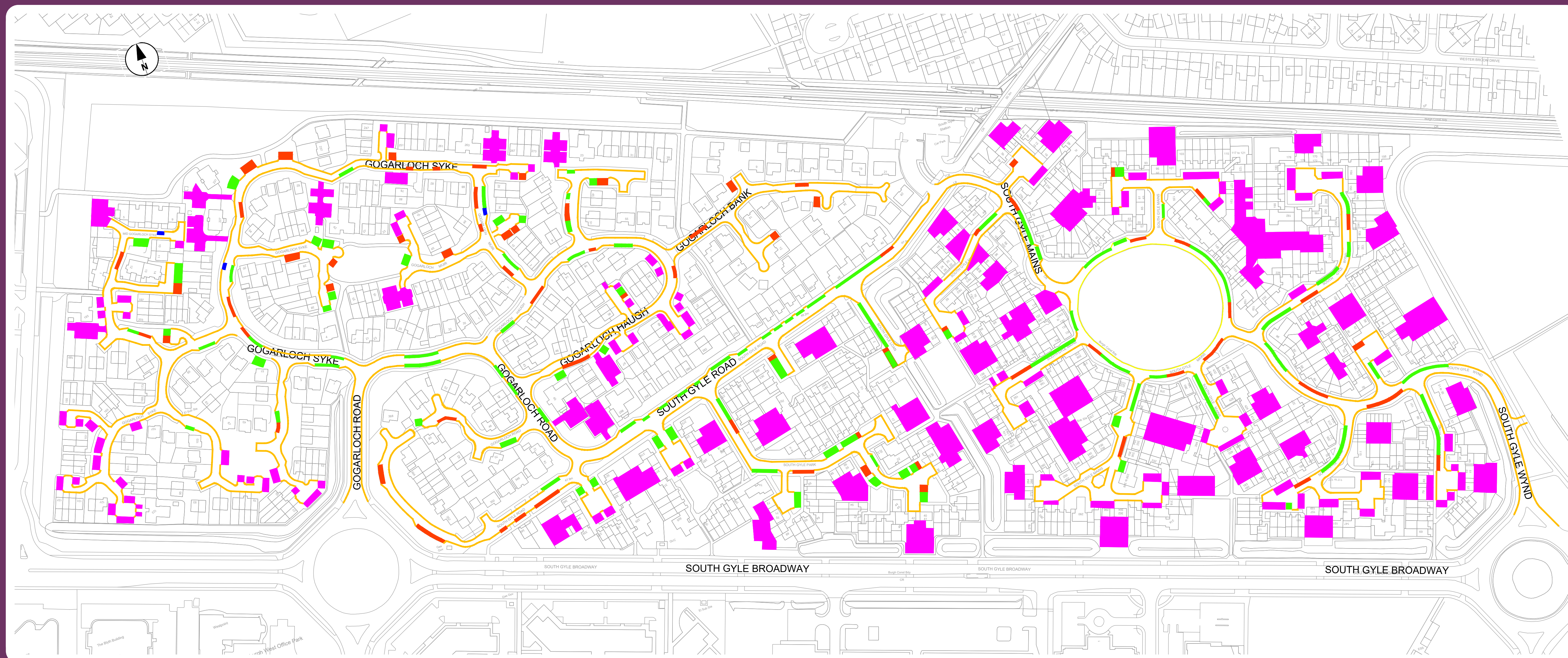
Example of priority parking scheme in Edinburgh





# GOGARLOCH AND SOUTH GYLE - RESIDENTS PRIORITY PARKING AREA

## MAP OF PROPOSED PARKING RESTRICTIONS



### KEY

- PROPOSED RESIDENTS PRIORITY PARKING
- EXISTING PRIVATE RESIDENTS PARKING
- EXISTING SINGLE YELLOW LINE
- PROPOSED DOUBLE YELLOW LINE
- EXISTING DISABLED PARKING BAY
- PROPOSED UNRESTRICTED PARKING

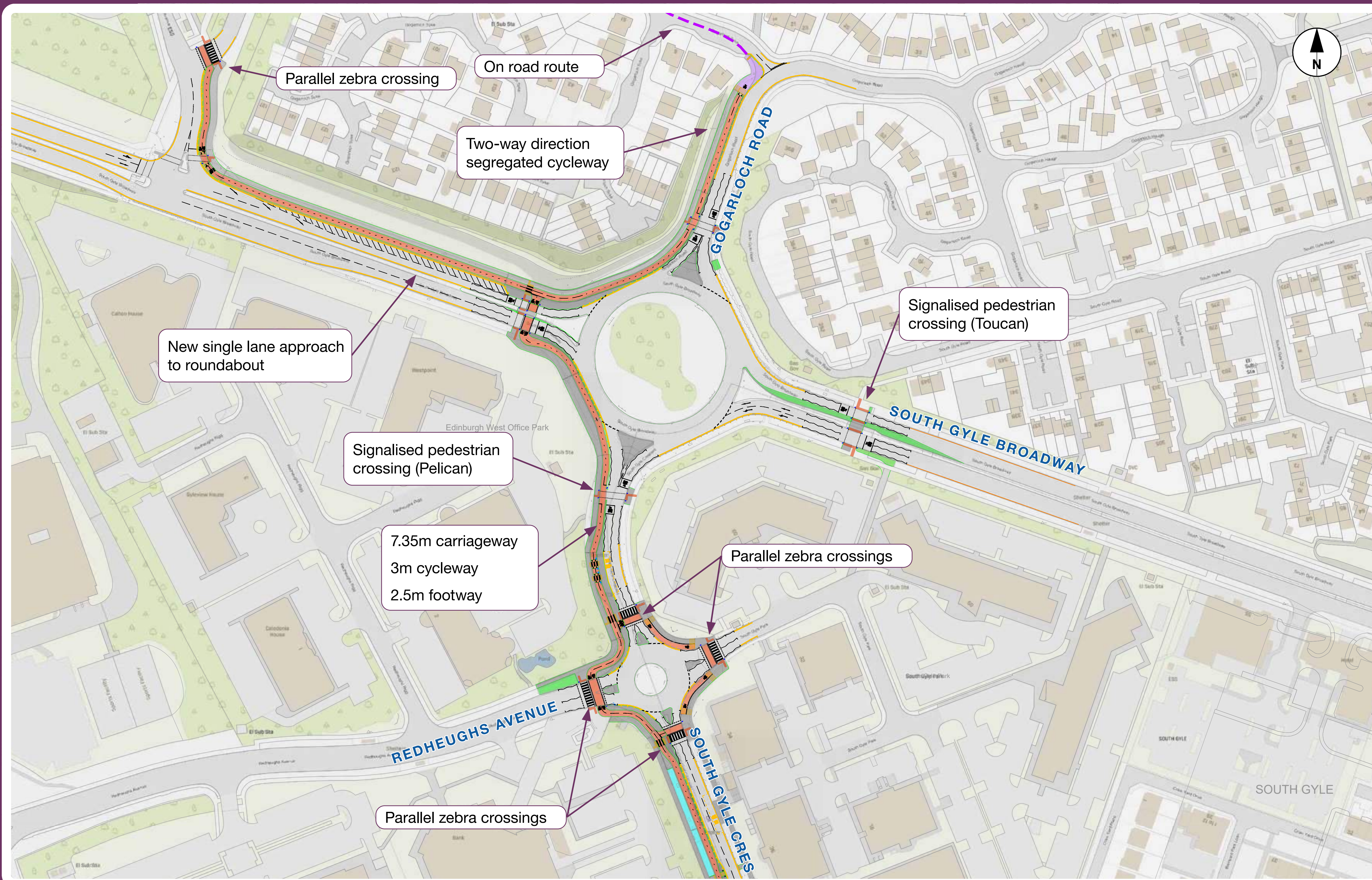


# CENTRAL SECTION - FINAL PLANS

## LOCATION PLAN



## SOUTH GYLE CRESCENT & SOUTH GYLE BROADWAY



### Key

- Shared use cycleway / footway
- Segregated cycleway
- New footway
- Wildflower planting
- On road cycle route

Scale  
0 10 20 40 80m  
Original Size (A0) 1:1000 @ A0 1:2000 @ A1

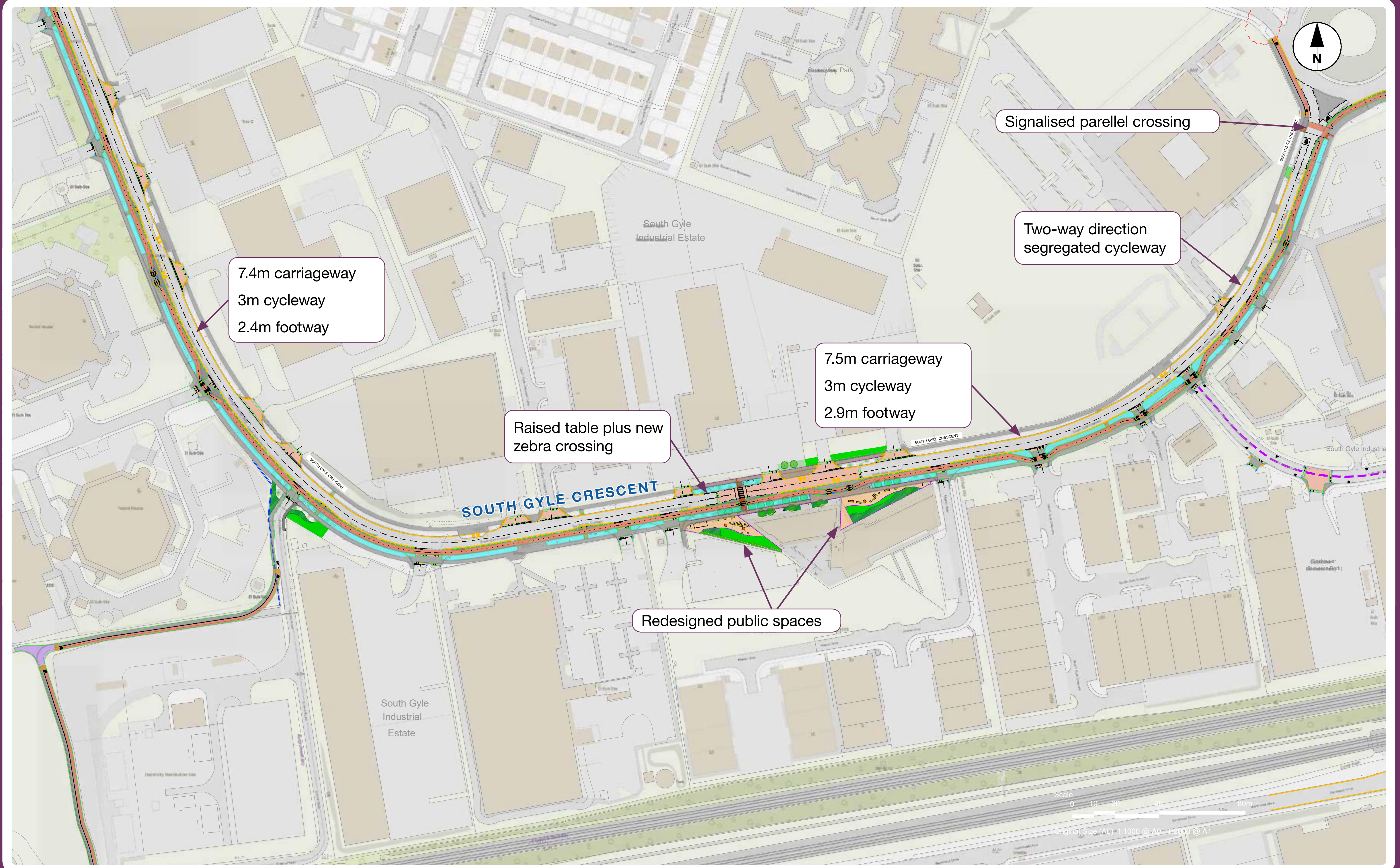


# CENTRAL SECTION - FINAL PLANS

## LOCATION PLAN



## SOUTH GYLE CRESCENT



### Key

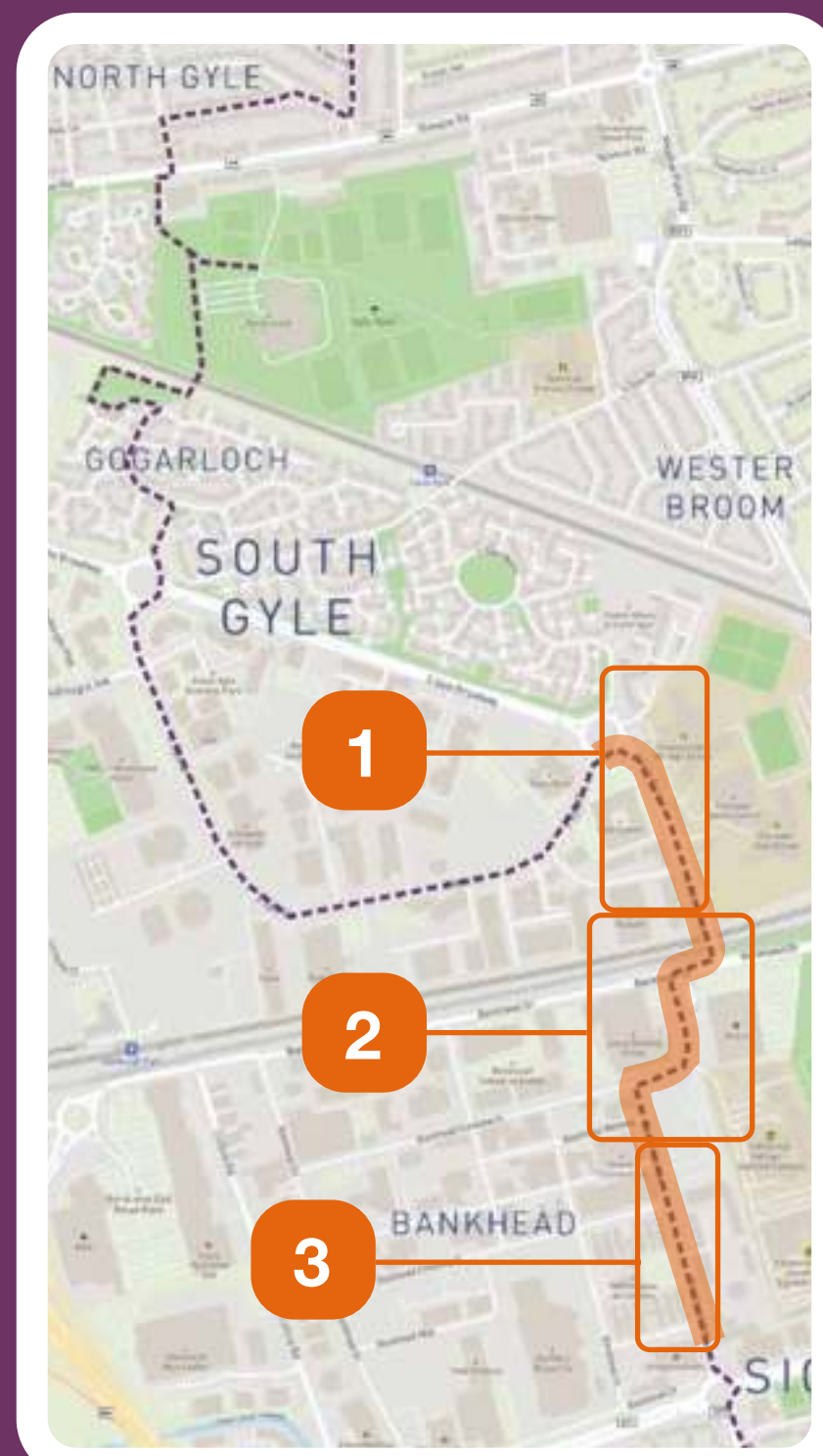
- Shared use cycleway / footway
- Segregated cycleway
- New footway
- Wildflower planting
- On road cycle route

Scale  
0 10 20 40 80m  
Original Size (A0) 1:1000 @ A0 1:2000 @ A1



# CENTRAL SECTION - FINAL PLANS

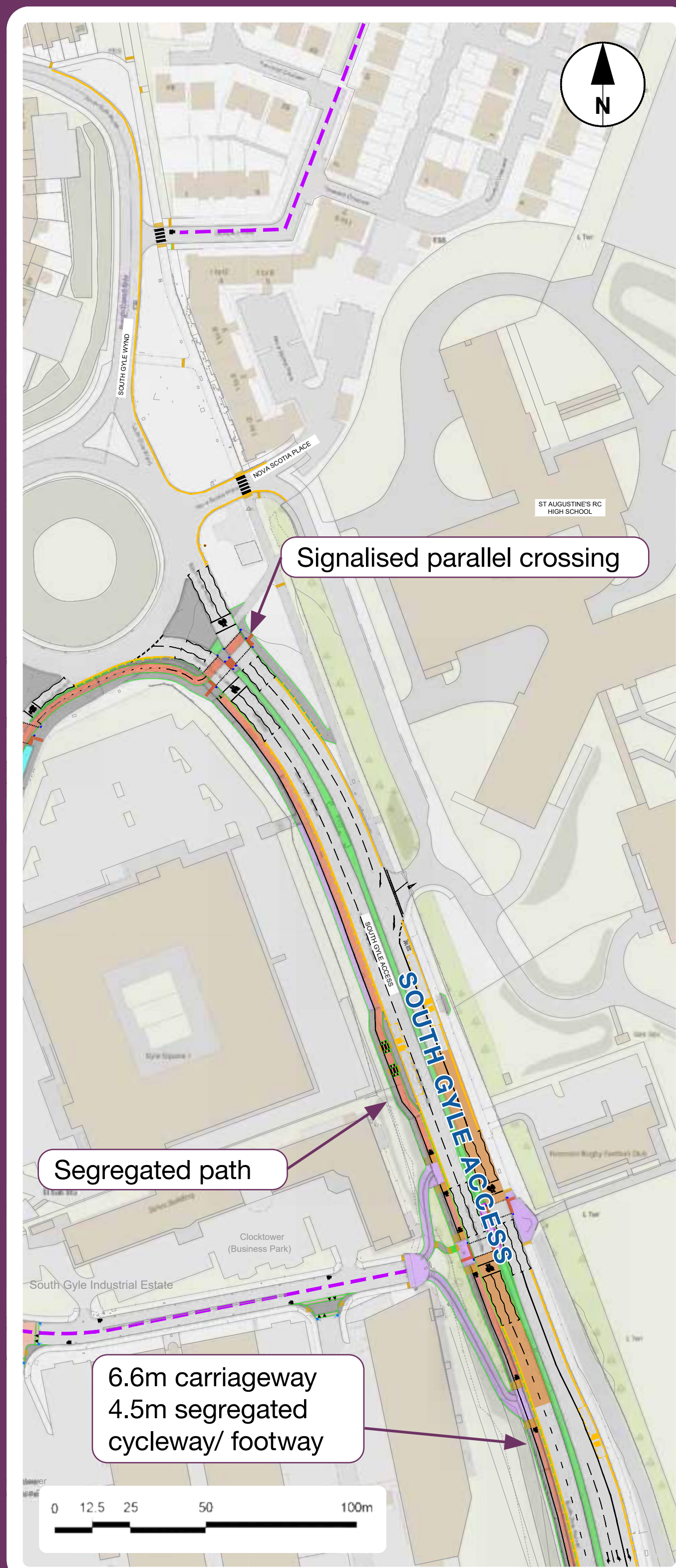
## LOCATION PLAN



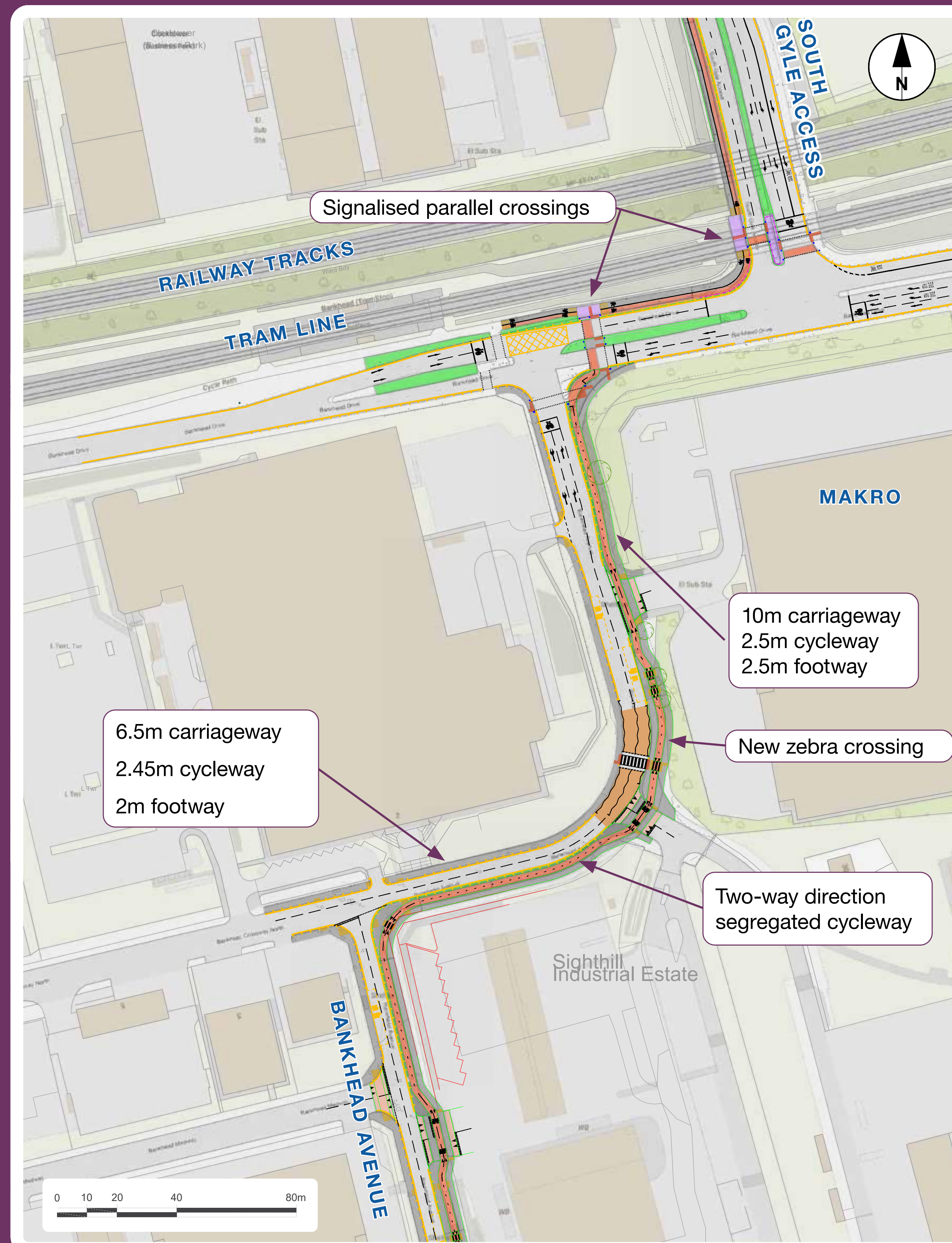
### Key

- Shared use cycleway/ footway
- Segregated cycleway
- New footway
- On road cycle route

## 1 SOUTH GYLE ACCESS



## 2 BANKHEAD AVENUE & BANKHEAD CROSSWAY



## 3 BANKHEAD AVENUE

