

# Spokes Action-Update 6 August 2021

[spokes.org.uk](http://spokes.org.uk) St Martins Centre, 232 Dalry Road EH11 2JG 0131.313.2114 twitter [@SpokesLothian](https://twitter.com/SpokesLothian)

## 0. Finding your councillors

Find your councillors by typing your postcode on [this page](#). If you already know your ward, [go here](#). Note that everyone has either 3 or 4 councillors, usually from assorted parties.

## 1. Spokes Summer Spaces for People challenge

Enter our summer challenge to win a Spokes Buff or a Spokes map of your choice – or both. You will need to visit either 3 or 4 Spaces for People locations, each in different parts of Edinburgh or the Lothians, and send us a photo and a few constructive comments on each.

This is a challenge, not a competition, so everyone who enters wins, providing you follow the rules exactly.

The challenge helps to publicise SfP schemes and helps us get feedback on them, so please tell your friends, relations, colleagues. We hope to keep the challenge open till end September – we are expecting a gentle stream of entries, but if we get an avalanche we may close it sooner. We are only able to accept one entry per household.

Full details, rules, and entry pro-forma here...

[www.spokes.org.uk/2021/07/summer-sfp-challenge](http://www.spokes.org.uk/2021/07/summer-sfp-challenge)



## 2. Cargo-bike offer for Spokes member households / families

Thanks to a very kind anonymous donation from a Spokes member we are able to offer 3 grants of up to £1000 each to Spokes member households who are buying a cargo bike, to carry children, allotment tools or whatever.

Note that this is a one-off offer, and is quite separate from our ongoing offer of cargobike support grants for [community organisations](#).

### Here's how the offer will work....

1. If you are seriously interested in taking up the offer, please email us your expression of interest, if possible by **16 August** [spokes@spokes.org.uk](mailto:spokes@spokes.org.uk)  
**When you email** you must state that you agree to conditions (a)-(c) below.

2. If more than 3 people apply by 16 August, we will select 3 at random. We will accept later emails if not all 3 grants have yet been applied for by 16 August, and we will keep a waiting list in case anyone drops out.

3. If we offer you a grant we will send you a form to complete and return to us along with a copy of your invoice from the shop, if possible by end October. We will then put you in touch with the Spokes treasurer to claim your grant.

- (a) The cargobike must be bought from a local business in Edinburgh or Lothian (not mail order and not a major chain store)
- (b) Your choice of model must be OK'd either by Naomi Arnold of [CargoBikeMovement](#) or by David Gardiner of [Laidback Bikes](#) as being suitable for the purpose in question [but you can buy from any local shop]. It is fine to email us your expression of serious interest now, before speaking to them
- (c) Within 3 months of the purchase you will send us 2 or 3 photos and a few paragraphs about your use of the cargobike (including any problems as well as the positives).



*Spokes-supported family cargobike under a previous Spokes offer. See more at [www.spokes.org.uk/documents/advice/cargo-bikes](http://www.spokes.org.uk/documents/advice/cargo-bikes)*

### 3. Events

#### Aug 8, Sun, 2-4 Links Gardens (Leith Links)

An informal get together initiated by [twitter.com/LeithLTN](https://twitter.com/LeithLTN) to celebrate the Spaces for People road closure which, sadly, is being reopened to motor traffic on the Monday.

Kirsty Lewin from Spokes Porty will be there with **Spokes maps and Spokes Buffs on sale** at the special price of £5 each. Please bring a crisp fiver (or more) – cash only!



#### Aug 9, Mon, 2pm Free Webinar on the IPCC 6<sup>th</sup> Assessment Report

On Monday the UN International Panel on Climate Change publishes part 1 of its 6<sup>th</sup> Assessment Report. This is a major moment in the developing understanding of climate change, its impacts and what must be done. Stop Climate Chaos is putting on a free webinar panel of scientists, campaigners and strategists to dissect and discuss the report.

Details and registration: [https://us02web.zoom.us/webinar/register/WN\\_BnX0XouxQfuP2XORljAB-w](https://us02web.zoom.us/webinar/register/WN_BnX0XouxQfuP2XORljAB-w)

Queries: [jasmine@theclimatecoalition.org](mailto:jasmine@theclimatecoalition.org)

#### Aug 14, Sat, midday-7pm Edinburgh Climate Festival, Leith Links [with Spokes stall]

“Free, family friendly, community-led ‘markestyle’ event aiming to celebrate and inspire climate action.” Includes...

- Family/Kids area
- Market and stalls
- Background music
- Upcycling workshops
- Seed planting workshops
- Storytelling and arts and craft
- Free clothes repairs
- Free bike repairs
- Electric bike trials
- Swap shop/ free shop with clothes, books, shoes & more!

More info: [twitter](#) [facebook](#)



The Spokes stall is coming by cargobike and our electronic cashless payment machine will have its first outing! Please come along and say hello - or volunteer to help!

### 4. Volunteers needed ... could it be you ??

- ◆ **South West Edinburgh** To help at Spylaw Park cargobike child-travel event – see (5) below. Contact Spokes to help at the Spokes stall, or contact Cargo Bike Movement to help with the event itself.
- ◆ **South West Edinburgh** At the height of the Lanark Road Spaces for People controversy, a group of local residents and parents from a wide range of backgrounds, created [SW20](#) (South West Edinburgh 20-minute Neighbourhoods) “to support local businesses, public services, schools and green spaces to be accessed in a more sustainable way.” They are now working [to respond to](#) the Council's latest Lanark Road consultation, which includes an option to remove a section of the cycle lane. If you live in South West Edinburgh, including Currie, Dreghorn/Oxgangs & Colinton, they'd like you to [get involved](#).

- ◆ **Portobello** The Council is expected to begin consulting on a controlled parking zone (CPZ) shortly, and our local group [Spokes Porty](#) is setting up a small working party to prepare a response. If you live locally and would like to be involved (or help in Spokes Porty more widely), email [spokesporty@gmail.com](mailto:spokesporty@gmail.com).
- ◆ **Policy person(s)** Spokes Planning Group has many consultations to respond to, and a lot more are expected later this summer when many of the Spaces for People projects start entering the [Experimental Traffic Order phase](#). However, there are also consultations on wider policy issues, such as Edinburgh Council's [draft 2030 Climate Strategy](#), or the Scottish Government's [Parking Enforcement Charges consultation](#) – but unfortunately we do not currently have the capacity to respond to all. **It would be great to have one or two new Planning Group members who have the time and knowledge/confidence to do draft responses to some of the policy consultations.** Others in Planning Group can then comment before the draft is finalised. There is often background material available, such as our responses to earlier consultations on similar topics. A list of current consultations, giving an idea of the variety, is [here](#).
- ◆ **North Edinburgh and East Lothian - bike shop hustlers** A couple of years ago our revived Maps Group set up a new system of local members from across the city and the region who volunteer to visit nearby(ish) bike shops (and maybe book shop or other outlet) to check on their supply of Spokes maps and let Spokes centrally know if more were needed. We thank these volunteers - it has been really successful in keeping shops stocked, increasing sales and, most important of all, thereby hopefully encouraging more people to cycle, and people to cycle more! We now need new hustlers for a few of the areas. You can adopt as many or as few shops as are convenient to you – even one local bike shop can be a great help! **Areas where we currently need new hustlers are North Edinburgh and East Lothian (most of the EL towns).** If you can help, or to discuss, please email [robert@pansmanse.co.uk](mailto:robert@pansmanse.co.uk).

## 5. Cargo Bike Movement [www.cargobikemovement.com](http://www.cargobikemovement.com)

CBM is a Community Interest Company set up in 2020 in response to the first Covid lockdown, bringing together cargobikes and volunteers to deliver food to those hit by insecurity. CBM has since become more fully established, with support from SEStran and Paths for All, so they now have a base in the old Forest cafe at Tollcross junction, and a paid coordinator, Naomi, as well as many volunteers.

In addition to redistribution of surplus supermarket food that would otherwise be wasted, CBM is also working hard, in cooperation with [FarrOut Deliveries](#), to expand use of cargobikes in the city – thus promoting an Edinburgh green recovery and demonstrating to the Council, businesses and the public how the city can change to a cleaner, safer and more climate-conscious future.

Ways to be involved...

- ◆ If you're interested in becoming a CBM volunteer, email [cargobikemovement@gmail.com](mailto:cargobikemovement@gmail.com)
- ◆ If you're thinking of buying a cargobike, you can see models and get advice. You may also wish to volunteer with them occasionally, using your new machine. Email for a good time to visit their base

### Nursery/Primary project, south west Edinburgh

Working with local parent [Dave McCraw](#), who takes his children to nursery by cargo bike along the Lanark Road Spaces for People route, CBM is planning to contact local nurseries and primaries to demonstrate to parents the opportunities for child transport by cargobike. There will then be an event for interested people to see and try out cargobikes, child trailers, etc in Spylaw Park. This is currently planned for the week beginning 20 September – the exact date and time will depend on feedback from nurseries and parents.

The event will include entertainment for children, Scotland's Active Travel Commissioner Lee Craigie intends to come along and the event may well grow further!

**We are hoping to have a Spokes stall, with maps, buffs, leaflets, etc. Any members who would like to help would be most welcome, especially if you live in south west Edinburgh.** Please email [spokes@spokes.org.uk](mailto:spokes@spokes.org.uk).





## 6. Edinburgh/Lothians area consultations

**Please respond to any of the consultations below which cover areas where you live, work or visit.** If you respond by email, please send us a copy; otherwise please let us know of any main concerns or thoughts which you'd like considered for possible inclusion in official Spokes responses. You could also send your points to your local councillors (section 0 above) and ask them to support you in their own comments.

### 6.1 Holyrood Park Road Network – ends 30 September [Consultation website](#)

NB – although within Edinburgh, this is a Historic Environment Scotland consultation, as they operate the park.

The consultation seeks your views on road closures in the Park. Before responding, we recommend reading the following...

- ◆ These Car Free Holyrood blog articles
  - [Road casualties in Holyrood Park](#) Note that in the last 5 years, 15 of the 30 reported casualties on Park roads have been cyclists – i.e. 50%, compared to the national average of 7.5%
  - [Inclusive and Equitable Access in Holyrood Park](#) – Parts 1 & 2
- ◆ [Tweet thread about the consultation](#) by Andrew White

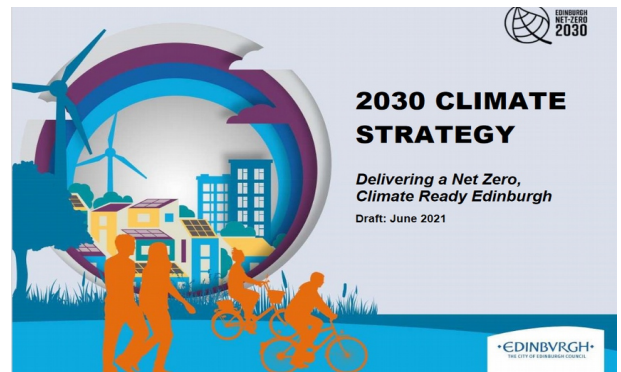
### 6.2 Edinburgh Council Draft 2030 Climate Strategy – ends 12 September [Consultation website](#)

*“The draft strategy outlines how we will work with citizens, communities and public, private and third sector organisations across the city to deliver a net zero, climate ready Capital by 2030.”*

With the recent Edinburgh flooding (let alone far greater disasters in other parts of the world) this consultation is very appropriate .

Spokes has not yet started on our response – we welcome comments – or volunteers to do a first draft!

The Council is also running online workshops/QA sessions, open to all, on Aug 14 (11-1), Sep 2 (9-11)  
More details and free registration from the above consultation web page.



### 6.3 Edinburgh Council Low Emission Zone – ends 20 September [Consultation website](#)

*“The City of Edinburgh Council aims to reduce air pollution, since it presents a significant threat to public health. It is especially harmful to young children, the elderly and those suffering from pre-existing conditions, including heart and lung diseases.*

Low Emission Zones (LEZs) are being introduced across Scotland's four largest cities: Edinburgh, Glasgow, Aberdeen and Dundee in response to dangerous levels of air pollution, primarily nitrogen dioxide (NO2), generated by road traffic. LEZs aspire to improve public health by discouraging the most polluting vehicles from entering an area. If a vehicle entering a LEZ does not meet the minimum exhaust emission standard, then a penalty fine is issued. The Zone is intended to only target the most polluting vehicles.”

As with 4.4, Spokes has not yet started on a response – we welcome comments – or volunteers to do a first draft!

One big concern is that the proposed LEZ boundary is only around a small very central area. This may result in additional traffic, particularly polluting vehicles, taking roads round the edges of the zone – e.g. [Holyrood Park](#).

Friends of the Earth Scotland is campaigning for [tougher LEZs](#) in the four cities above.

## 7. COP26 International Climate Conference, Glasgow November 2021

- ◆ **Official website** [ukcop26.org](https://ukcop26.org)
- ◆ **Climate Fringe** Environmental and social justice organisations across Scotland are preparing, including through events, lobbying, documents, workshops and more. See [climatefringe.org](https://climatefringe.org)
- ◆ **Volunteering at COP26** [climatefringe.org/cop26-volunteering](https://climatefringe.org/cop26-volunteering) There are big volunteering opportunities for people who can be in Glasgow during all or part of the Conference
- ◆ **COP26 accommodation needed** Can you offer accommodation to a climate campaigner who comes to Scotland for COP26? Spaces throughout the central belt, including Edinburgh, are needed. Even a floor or sofa may help, if spaces become very tight. A modest charge to cover costs is acceptable. Details here... [www.jubileescotland.org.uk/become-a-host-for-the-cop26-homestay-network](https://www.jubileescotland.org.uk/become-a-host-for-the-cop26-homestay-network)
- ◆ **Edinburgh Climate Commission** This is a powerful independent group, including the Council, universities and businesses, working “to accelerate climate action and impact in Edinburgh.” [edinburghclimate.org.uk](https://edinburghclimate.org.uk)



## 8. Scottish Government consultations

Please do respond to all that concern you. Also, as mentioned in the 'volunteer' section (4) above, we'd greatly appreciate a volunteer with the time/knowledge to join Spokes Planning Group with a view to preparing draft Spokes responses to 'policy' consultations such as one or more of these.

### 8.1 Scottish Government budget for 2022/23 – ends 13 August [Consultation web page](#)

The Scottish Parliament's Finance Committee is running a pre-budget consultation, and are particularly interested in covid-related aspects. The draft budget itself has not yet been published, but this consultation might influence what is in it; and will certainly influence how it is scrutinised when it is published.

Spokes has not yet drawn up a draft response, but points to consider in your own response include...

- Ensuring there are resources [to build on the Spaces for People work](#). Whilst SfP was introduced for covid-related reasons, it also supports in a big way other government objectives on active travel, climate and public health. The government itself has said this – but it must ensure the resources are there
- The Scottish Government has set a bold target to cut car-km 20% by 2030. This will be very difficult to achieve [see 2(b) [here](#)]. It will require measures to boost active travel (as above) and public transport. But it will also require an end to the £100m's spent on trunk road expansion: the budget should redirect that investment into cities, towns and villages – a better way to assist covid recovery!

### 8.2 Penalty Charges for Parking Enforcement – ends 4 October [Consultation page](#)

This consultation is about toughening the rules and fee levels for some existing parking illegalities, and also setting penalty rates for the new parking offences defined in the 2019 Transport Act, and which are expected to come into effect next year – namely, pavement parking, double parking and drop-kerb parking.

Incidentally, if your editor understands it correctly, these penalties will only apply in Councils which have decriminalised parking enforcement – this includes Edinburgh, Midlothian and East Lothian, but not West Lothian, where the police have to enforce parking rules rather than the council doing so.

### 8.3 Workplace Parking Levy (WPL) consultation – ends 6 September [Consultation page & survey](#)

This is another slightly nerdy one, but it includes several questions relating to public health and environment, so please consider responding to the questions you find relevant – we suggest some, overleaf.

The Transport (Scotland) Act 2019 gives Councils the power, if they so choose, to introduce workplace parking levies (in practice only the cities are likely to consider doing so). A WPL means the Council charges employers a periodic levy for all staff parking spaces over a certain minimum number (there are exceptions such as spaces for blue badge holders).

Such a scheme has been in place in Nottingham, England, for years, and has raised £m's for public and active travel schemes, whilst the city has remained an attractive place for business and investment. Incidentally, Spokes (and others) had argued the levy should also cover customer spaces at large sites such as out of town shopping centres, but the Scottish Government rejected this.

The government is now consulting on the rules which Councils will have to follow to implement a WPL. Spokes has not yet prepared our response, but some questions you might like to answer are below, with suggestions...

*Q2: who should be consulted on a WPL proposal?*

- Groups representing those likely to benefit from an environment with fewer cars and better active/public transport should be consulted, not just those who will have to pay the levy

*Q13: impacts of the WPL on certain groups in terms of equalities*

- Whilst the rules must ensure certain groups, such as disabled or children, are not unfairly disadvantaged, this question also needs to take into account the *benefits* of the scheme for such groups – for example an environment with fewer cars and better active/public transport

*Q14: impact on businesses*

Although businesses will have to pay the levy, there are also some potential advantages for them, including...

- legally the levy must be used by councils for transport improvements, particularly public & active travel
- businesses will benefit from car-reduced cities, so reducing delays to delivery vans etc
- businesses will be encouraged to re-think use of their parking spaces, so as to reduce their levy. Space in cities is often very valuable for redevelopments or even for renting out to other businesses.

*Q16: impact on the environment*

Obvious benefits in reduction of car use, reduced climate and toxic emissions

*Q17: other comments*

Next time there is a suitable legislative opportunity, the WPL law should be widened to also include a levy on customer car spaces at large car-based retail and leisure outlets. As with WPL, this wider '*premises levy*' should be levied on the business, who can then choose whether to pass on some/all to customers – and/or to react in other ways such as incentives to use public or active travel to the site, thus reducing the number of spaces needed.

## 9. More and future consultations – *Check council, government, other consultations*

- ◆ **Edinburgh** [consultationhub.edinburgh.gov.uk](https://consultationhub.edinburgh.gov.uk)
- ◆ **Edinburgh** [Edinburgh traffic orders](https://www.edinburgh.gov.uk/traffic-orders)
- ◆ **East Lothian** [www.eastlothianconsultations.co.uk](http://www.eastlothianconsultations.co.uk)
- ◆ **Midlothian** <https://www.midlothian.gov.uk/directory/33/consultations>
- ◆ **West Lothian** [www.westlothian.gov.uk/consultations](http://www.westlothian.gov.uk/consultations)
- ◆ **Scottish Government** [consult.gov.scot](https://consult.gov.scot)
- ◆ **Transport Scotland** [www.transport.gov.scot/consultations](https://www.transport.gov.scot/consultations)
- ◆ **Scottish Parliament** [yourviews.parliament.scot/consultation\\_finder](https://yourviews.parliament.scot/consultation_finder)
- ◆ **Just in case...** Transform Scotland keeps an updated page of current transport-related consultations... [transformscotland.org.uk/whats-new/action-alerts](https://transformscotland.org.uk/whats-new/action-alerts) Check it out in case there's anything important that doesn't appear in the website addresses above (there often is!)

## 10. Keeping in touch

- ★ Remember to check out our **website** every so often [www.spokes.org.uk](http://www.spokes.org.uk)
- ★ We are active on **Twitter** [@SpokesLothian](https://twitter.com/SpokesLothian). Follow us and ReTweet tweets that you support. Recent tweets also appear on our website in the right-hand column.
- ★ If you use **Facebook**, please like, share, etc the [Spokes Facebook page](https://www.facebook.com/SpokesLothian).
- ★ To campaign effectively Spokes needs as many supporters as possible. If you are not already a member and you like what we do, go to [www.spokes.org.uk/membership](http://www.spokes.org.uk/membership).