

### CA6 | John Scott Russell Aqueduct – Ratho East (1/4)

CA6BH1 | Opportunity to improve sightlines at pinch point at bridge hole at Easter Hermiston Bridge.

CA6BH2 | Opportunity to improve sightlines at pinch point at bridge hole at Gogar Station Road Bridge.

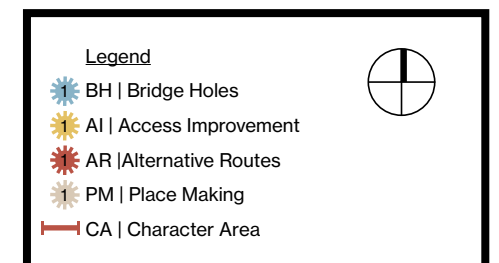
CA6AI1 | Opportunity for access improvement East of Gogar Station Road Bridge.

CA6AI2 | Opportunity for access improvement to the east side and additional ramp on the west side of Hermiston Bridge. Chicane is ineffective.

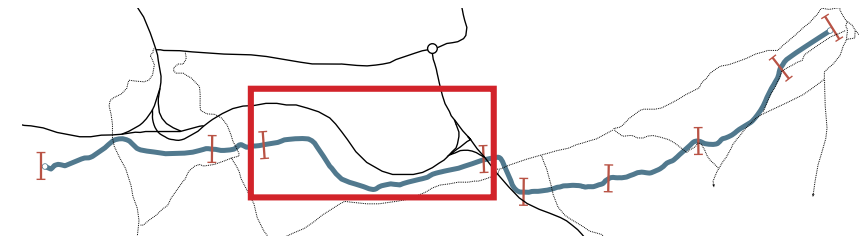
CA6AR1 | Opportunity to have alternative route over Easter Hermiston Bridge for bikes.

CA6AR2 | Opportunity to have alternative route over Gogar Station Road Bridge for bikes.

CA6PM1 | Opportunity for placemaking a green area, e.g. seating.



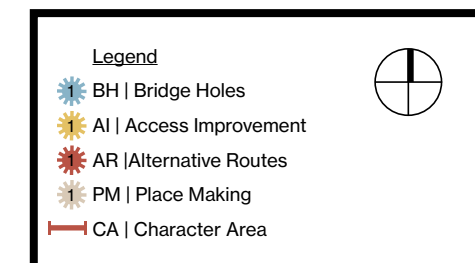
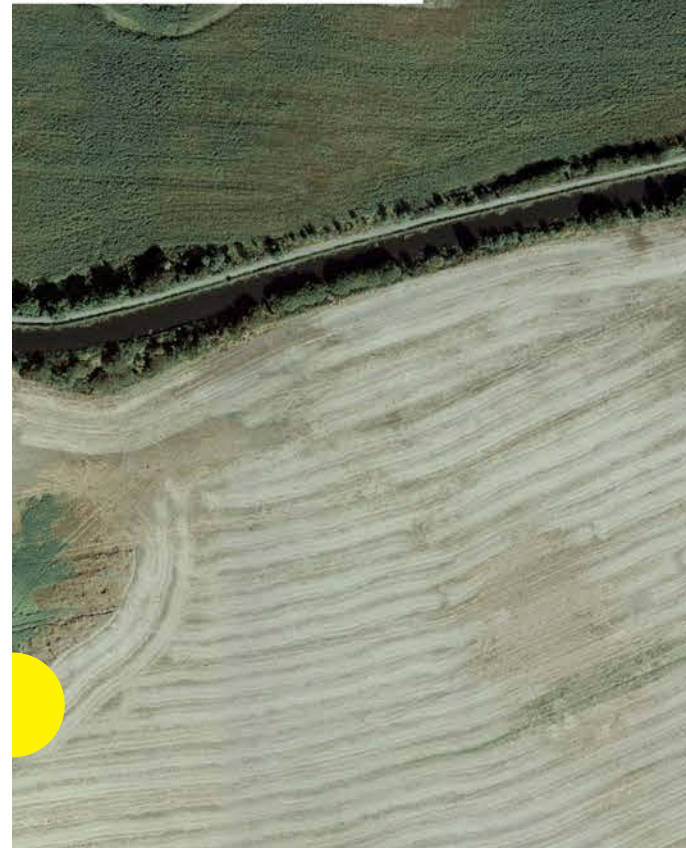




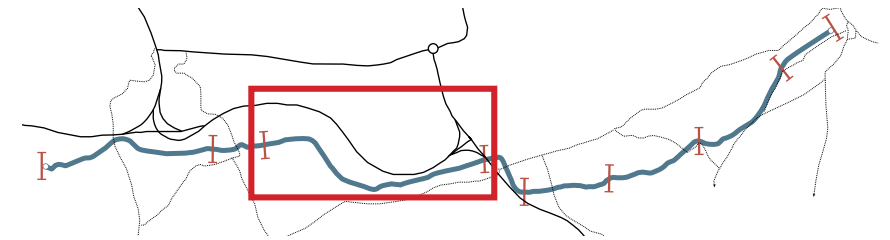
## CA6 | John Scott Russell Aqueduct – Ratho East (2/4)

CA6BH3 | Opportunity to improve sightlines at pinch point at bridge hole at Long Hermiston Bridge.

CA6AR3 | Opportunity to have alternative route over West Hermiston Bridge for bikes.







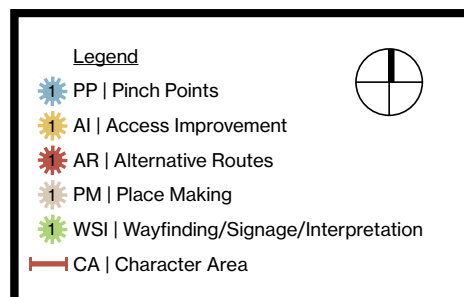
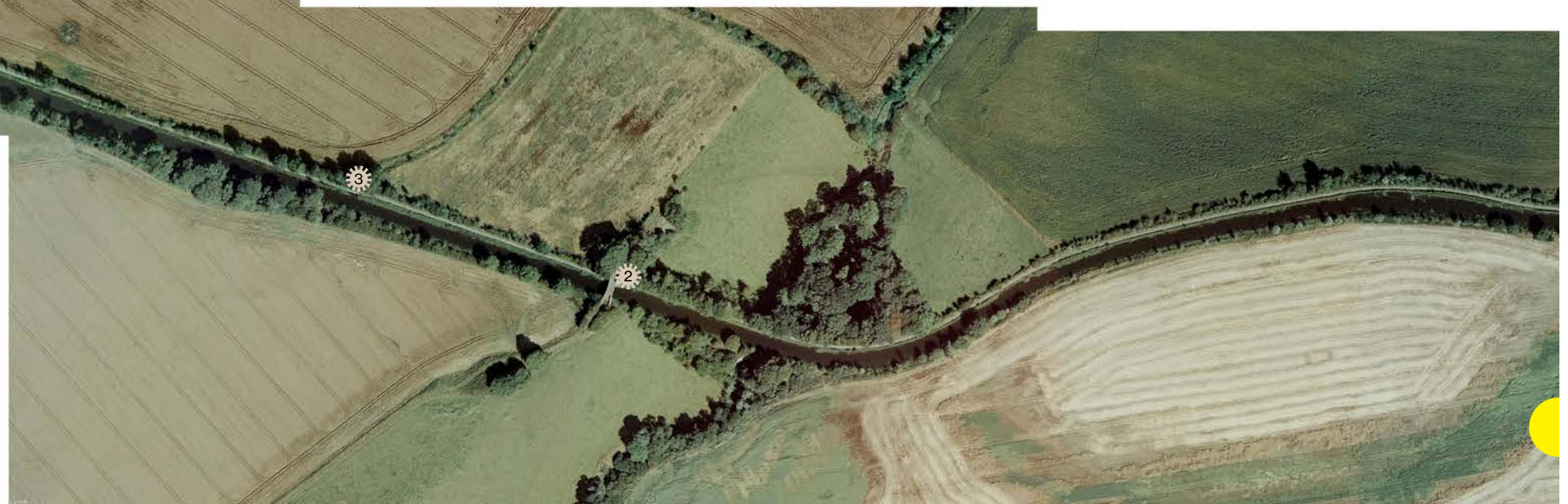
### CA6 | John Scott Russell Aqueduct – Ratho East (3/4)

CA6BH4 | Opportunity to improve sightlines at pinch point at bridge hole at Gogar Moor Bridge.

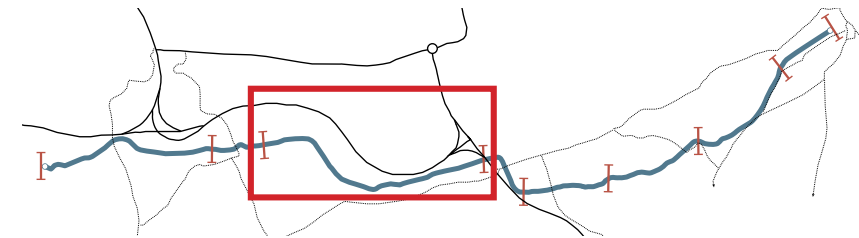
CA6AR4 | Opportunity to have alternative route along a existing farm road for bikes.

CA6PM2 | Opportunity for placemaking at end of farm road, e.g. seating.

CA6PM3 | Opportunity for placemaking at canal overflow, e.g. seating.












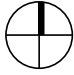
## CA6 | John Scott Russell Aqueduct – Ratho East (4/4)

CA6AR4 | Opportunity to have alternative route along an existing farm road for bikes.

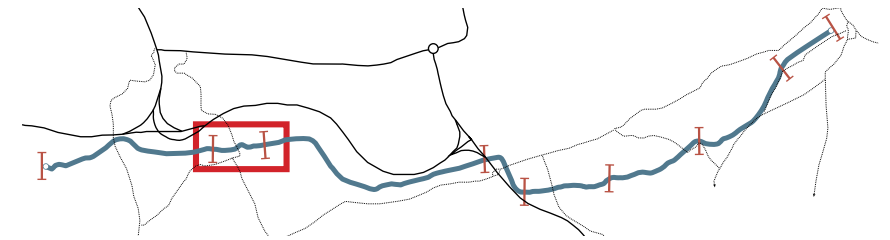


Legend

-  BH | Bridge Holes
-  AI | Access Improvement
-  AR | Alternative Routes
-  PM | Place Making
-  CA | Character Area







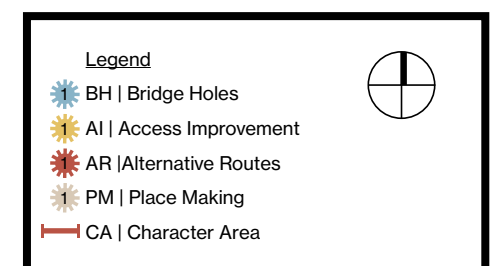
### CA7 | Ratho East – Ratho West (1/1)

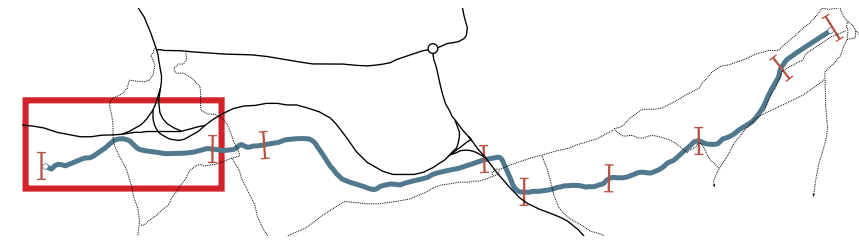
CA7PM1 | Opportunity to improve the entrance to Ratho.

CA7PM2 | Opportunity to improve wall mounted seating.

CA7AI1 | Opportunity to have path follow desire line.

CA7AR1 | Opportunity to create alternative route to EICA

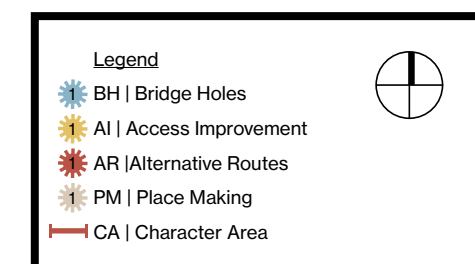




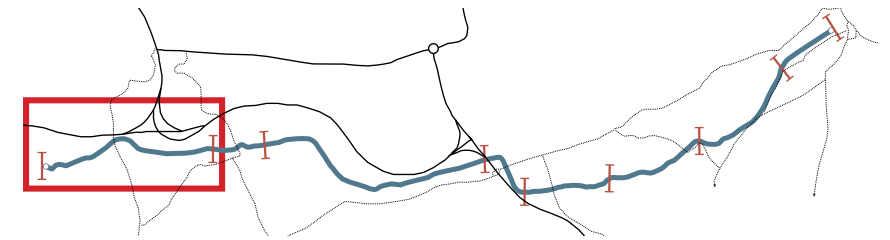
### CA8 | Ratho West – Almond Aqueduct (1/3)

CA8AI1 | Opportunity for access improvement at access point to EICA.

CA8AR1 | Opportunity to create alternative route to Ratho and aqueduct at Clifton Hall Road.







### CA8 | Ratho West – Almond Aqueduct (2/3)

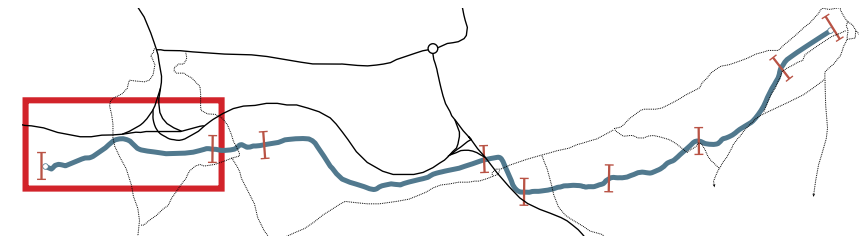
CA8BH1 | Opportunity to improve sightlines at pinch point at bridge hole at Clifton Hall Road (EICA).

CA8AR2 | Alternative routes from/to EICA.

CA8PM1 | Opportunity for placemaking along the bank along the towpath.







### CA8 | Ratho West – Almond Aqueduct (3/3)

CA8BH2 | Opportunity to improve sightlines at pinch point at bridge hole Nelfield Bridge.

CA8BH3 | Opportunity to improve sightlines at pinch point at bridge hole Clifton Bridge.

CA8BH4 | Opportunity to improve sightlines at pinch point at bridge hole at Clifton Hall Bridge.

CA8AI2 | Opportunity for access improvement to Clifton Bridge.

CA8AI3 | Opportunity for access improvement at access point to River Almond.

CA8PM2 | Opportunity for placemaking along the towpath, e.g. seating.

CA8PM3 | Opportunity for placemaking to the west of Almond Aqueduct, e.g. seating.

