

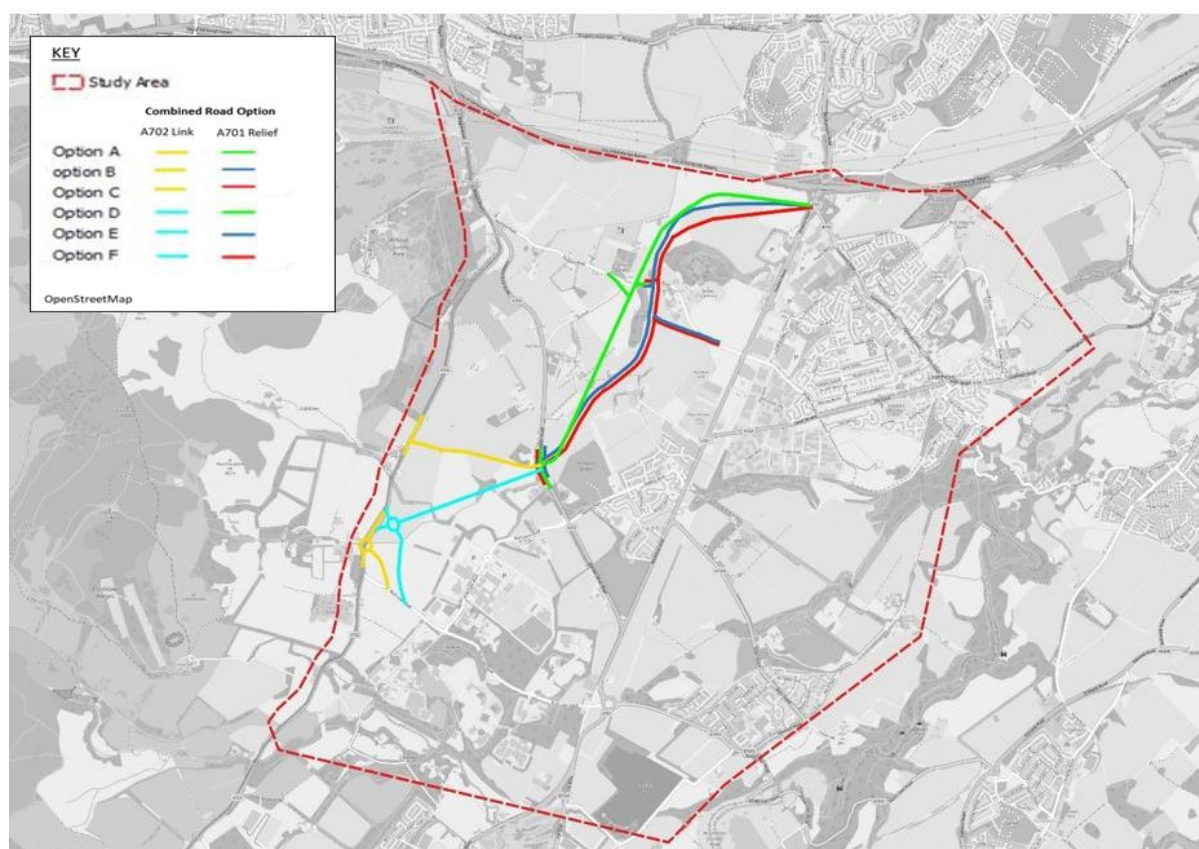
23rd November 2021

A701 Relief Road – Walking, Cycling and Horse-Riding Assessment

Dear Consultee

SYSTRA Transport Consultants are preparing an assessment of non-motorised user needs in the vicinity of the proposed relief road. We are acting on behalf of Midlothian Council and their highway design consultants. Our report will help the design team to plan for appropriate measures which improve the safety of pedestrians, cyclists and horse-riders and encourage future journeys by these modes.

An outline plan of the proposed scheme and study area is attached. A number of possible alignments are shown and the final proposed alignment has yet to be agreed.



We invite you to contact us with your comments on the following points, and any others you wish to raise.

- Existing safety issues (ideally with locations)
- Key desire lines and destinations
- Preferred type and location of new NMU facilities
- Likely impact on NMU journeys beyond the immediate highway scheme

Please send comments to Tim McKavanagh at tmckavanagh1@systra.com. We plan to hold an information webinar with a presentation on Weds 1st December (6.30pm) where you can ask questions and raise concerns. Please register using the following link before the event.

<https://app.livestorm.co/systra-1/a701-relief-road-walking-cycling-horse-riding-webinar?type=detailed>

Yours sincerely,

Paul Osborne

Associate, SYSTRA