

Spokes Action-Update 12 January 2022

spokes.org.uk St Martins Centre, 232 Dalry Road EH11 2JG 0131.313.2114 twitter [@SpokesLothian](https://twitter.com/SpokesLothian)

0. Finding your councillors

Find your ward & councillors by typing your postcode on [this page](https://www.edinburgh.gov.uk/council-and-committees) [or [edinburgh.gov.uk](https://www.edinburgh.gov.uk) : Council & Committees : Find your Councillor]. Note that everyone has either 3 or 4 councillors, usually from assorted parties.

1. Hopes and Challenges for 2022

First – happy new year to you and all Spokes members.

This year, and indeed this month, is the long-awaited time when work begins on the ground on **CCWEL**, the city centre west-east cycleroute. Sadly, the concerted opposition in the early days, and the consequent delays during legal processes, including the unnecessary government inquiry, led to increased costs and the plans being somewhat stripped back.

Furthermore, council policies have moved on such that if it was being designed today a direct route via Princes Street might well be the choice. Despite this, it will be a great start for this city, especially when linked with the Meadows to George Street route a year later.

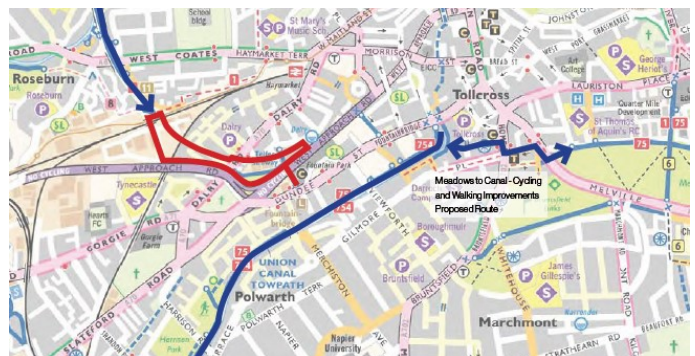


CCWEL Roseburn visualisation

More great news is the big rise in Scottish Government **active travel cash**, thanks to the Green/SNP deal which promises that 10% of the transport budget will go to active travel by 2024/25, i.e. over £300m. As a first stage the 22/23 AT budget rises from £115m to £150m – not all we had hoped but still very substantial.

Perhaps most important of all is the decision by Edinburgh Council to work towards a **30% reduction in car-km** by year 2030, an incredibly tough target, following on from the Scottish Government's 20% commitment. These ambitions are so difficult that there is a big '?' over both until we see substantial action – which must entail sticks as well as carrots. Already a year has passed since the Scottish Government announced their 20% commitment, and nothing has happened – even the promised 'route map' of actions to reach the 20% is not yet published. Hence the big '?' and the need for us to keep reminding politicians all the time of their promises.

Apart from CCWEL, many other cycle projects are behind schedule – although covid has meant that we have seen many other new and unexpected projects, notably the protected cycleroutes on many of Edinburgh's main roads. As a result, a revised programme of currently planned projects (apart from most of the Spaces for People covid-related schemes) was approved by the Transport Committee in late 2021. For example, Meadows to Canal and Roseburn to Canal are due to start work next financial year 2022/23. Check out the [Committee report](#) for the current status of projects that interest you – remembering, of course, that things change continually! If you have questions, contact your local councillors (see top of page for contact).



Roseburn to Canal - construction starts 22/23

A big uncertainty this year will be the **Council elections** on 5 May. It is vital to ensure that parties retain the Council commitment to allocating at least 10% of the transport budgets (capital and revenue) to cycling. Apart from anything else, this brings in big sums from Sustrans who now match fund £7 for every £3 invested by the Council. At the [previous \(2017\) council elections](#) Green, Lab and SNP manifestos all committed to the 10% for cycling, whilst Lib Dem's 10% promise was for both cycling and walking, and the Conservatives did not mention it.

There is a major 2022 article on the Spokes website spokes.org.uk/2022/01/hopes-challenges-for-2022 covering much more than the above: please have a read, and help publicise the article by [retweeting](#), [facebook](#) or passing on to friends.

Hopes & Challenges for 2022

What can we expect in Edinburgh and Scotland for bike use and wider sustainable transport in the uncertain year now beginning? What will Spokes – and you! – need to support, to oppose, to provide, to improve or to highlight in order to encourage and speed up the move towards more sustainable and healthy places to live and get about? This article outlines some topics, large and small, which we expect to matter in 2022.

2. Spokes news

Garden sheds

As you may recall, Spokes ran a persistent and eventually successful campaign over many years to get a change in legislation such that sheds under a certain size could be installed in front gardens without the need for planning permission (which included a non-refundable fee of around £200).

Our website page on the subject has therefore been completely rewritten to reflect the new situation. Lower down on the page we have retained the history of the campaign.

<http://www.spokes.org.uk/documents/advice/bike-storage-gardens/>

Household cargobike grant available

Thanks to a another very kind donation we can again offer a grant of £1500 (or 50% of the cost, whichever is lowest) to a Spokes member household towards purchase of a cargo-bike. This grant is in part donated by a family who would like their own cargo bike but live in a flat and have nowhere to store it, so decided to do the next best thing and help another family buy a cargo bike!!

This is a one-off offer, and is quite separate from our ongoing offer of cargobike support grants for [community organisations](#).

Here's how the offer will work....

1. **If you are seriously interested in taking up the offer**, please email us your expression of serious interest, by January 31st. spokes@spokes.org.uk When you email you must state that you agree to conditions (a)-(c) below. *It is fine to email us your expression of serious interest now, before making a final decision.*

- (a) The cargobike must be bought from a local business in Edinburgh or Lothian (not mail order and not a major chain store)
- (b) Your choice of model must be OK'd by Naomi Arnold of [CargoBikeMovement](#) or by David Gardiner of [Laidback Bikes](#) as being suitable for the purpose in question [but you can buy from any local shop]
- (c) Within 3 months of the purchase you will send us 2 or 3 photos and a few paragraphs about your use of the cargobike (including any problems as well as the positives).

2. If more than one person applies by 31 Jan, we will select at random from applications that meet the criteria. We will keep a waiting list in case the chosen person drops out.

3. If we offer you a grant we will in early February send you a form to return to us along with a copy of your invoice from the shop. We will then put you in touch with the Spokes treasurer to claim your grant.

Old edition Edinburgh Spokes maps, free to good homes

Now that our new Edinburgh map is out, we still have a stock of a few 100 of the previous (2016) edition. These are available free to any community or educational organisation that can make use of them. Obviously they are not for resale, and we hope they will go to people who cannot easily afford one or would not otherwise buy one, or for educational purposes.

Already we have donated to Bikes for Refugees, to a community library and an educational establishment. We have a [factsheet showing potential uses in schools](#).

If you are involved in or know of a relevant organisation, please email office@spokes.org.uk saying how many copies you could use, and how. As we are all volunteers, please contact relevant organisations yourself in the first place, to be sure that they would potentially use the maps, and how many, before emailing us.



Julia collecting a Christmas tree in her Spokes-supported family cargobike
[Julia's cargobike report](#)

3. Forthcoming events

- Jan 25, 5-6.30pm **National Planning Framework, talk & discussion** by Transition Edinburgh and Planning Democracy. [More info and sign up here](#). See also **NPF4** in our Consultations section below.
- Feb 2, 7-8.45pm **Film – Scotland, Our Climate Journey** 60 minute film followed by discussion. The film “explores the journey of policymakers, industrialists, community groups, farmers, scientists and NGO and youth activists” over the last 10 years, leading up to COP26 and beyond. “The film leaves us with a sense of hope, inspiration, and renewed strength for the challenges ahead.” Book your place [here](#).
- Feb 16, 1300-1400 **Seminar on Active Travel data** For the academically-minded. What data is or could be available about cycle use to help inform future active travel policy? Speakers and discussion. Info [here](#).
- Soon?? **Spokes public meeting** We are planning a public meeting on the Scottish Government plans to [cut car-km 20% by 2030](#), and the more recent City Council plans for a 30% cut [see our [2022 article](#)]. These targets are incredibly ambitious and it will be vital to maintain continuous pressure and reminders. Our public meeting will be a step in that process. The meeting date will be finalised when the Scottish Government eventually publishes its promised 'route map' of actions to achieve the 2030 commitment.

4. Planning Proposals

Several major developments in the city are at the 'PAN' stage (Proposal of Application Notice). This is a legal requirement for large developments – the public must be consulted via a PAN exhibition, online or in person, before the developer is allowed to submit a full planning application (PA). The planning application is then supposed to take account of the PAN consultation, hopefully to reduce the number of objections at PA stage.

Details of the exhibition are meant to be publicised by the developer, but they are not always obvious. Some consultations are just online exhibitions open for a few weeks, whilst others also include one or more days with the developer available to answer questions interactively and possibly to give a presentation.

We try to list major current PANs on the website – go to [spokes.org.uk – consultns – planning proposal consultns](https://spokes.org.uk/consultns-planning-proposal-consultns)

Below are 2 current PANs, with email addresses included so you can find out more. Apologies that the notes are so brief, but we have not had the time to do anything more extensive, and Spokes may or may not have the capacity to respond to all of them. ***If you submit comments, please send us a copy.***

Notes: Approval of a PAN on the Council's [Planning Portal](#) merely means that the developer has permission to go ahead with a public consultation, *not* with the development! To see this approval, and contacts for more info about the PAN, type in the full reference below in the search line at the Planning Portal.

21/06125/PAN Cameron Toll Centre redevelopment, including residential, hotel, and ped/cycle routes.

Online consultation at

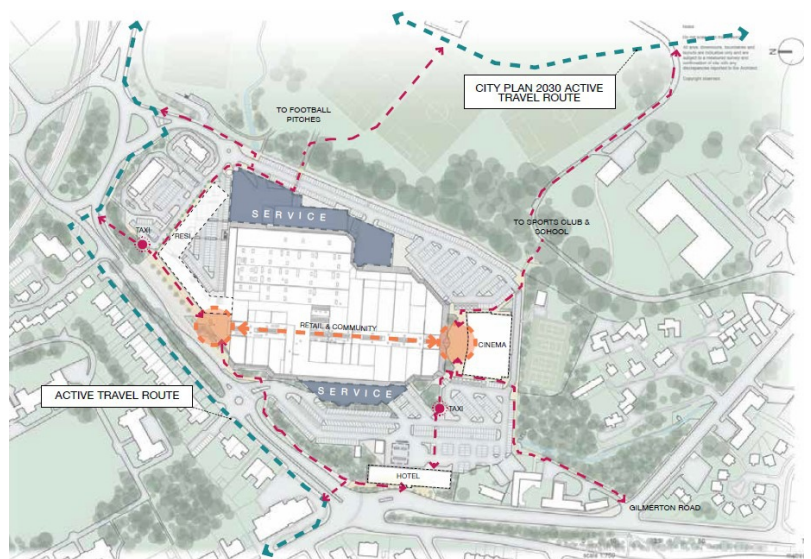
camerontoll.co.uk/home/consultation

Comments by 31 Jan

Questions: camerontoll@libertyone.co.uk

The online exhibition boards are also physically in the Centre until 14 Jan. Some points you might like to consider making...

- (a) there seem several potentially useful missing cycleroute links, including around the hotel, along the south edge of the site, and from the hotel to Gilmerton Road
- (b) is the orange "retail and community" dotted line open to bikes?
- (c) cargobike/trailer parking needed
- (d) cycle routes and parking facilities should meet latest quality standards including Transport Scotland's [Cycling by Design](#) and Edinburgh Council's new [cycle parking factsheet](#)



Proposed connections to the active travel routes.

21/06302/PAN Gilmerton Station Rd residential development, access, landscaping. (Miller Homes); at west end of Gilmerton Stn Rd, bounded by Lasswade Rd. **Online event, 27 Jan.**, website & details tbc. For details, contact arthur.mann@miller.co.uk

5. 40mph roads in Edinburgh

- The Council is in the process of reducing speed limits from 40mph to 30mph on 22 roads in the city, as listed in [this 27.2.20 Transport Committee report](#)
- They are now doing a review of speed limits on all remaining 40mph roads, most of which are in rural west Edinburgh. A map of roads over 40mph is at <https://arcg.is/1W4nXP>
- The review may result in lowering of some of these speed limits, either for whole roads or where they pass through small settlements or where there are particular danger points
- At this stage there is not a formal consultation, which will happen when traffic orders are published and, if councillors so decide, also before that. However if you have comments on any particular roads from a cycling perspective, you can email them to Tracy.Bach@edinburgh.gov.uk. If so, please also copy to spokes@spokes.org.uk so Spokes Planning Group can consider including your points in our own email to the council
- Some obvious roads for lower limits, from the cycling safety perspective, could be Burnshot Road (site of a cyclist fatality and serious injury in the last 5 years), Long Dalmahoy Road, and the road east out of Dalmeny.

6. Edinburgh/Lothians area consultations [see also spokes.org.uk/consultns]

Please respond to any of the consultations below which cover areas where you live, work or visit. If you respond by email, please send us a copy; otherwise please let us know of any main concerns or thoughts which you'd like considered for possible inclusion in official Spokes responses. You could also send your points to your local councillors (section 0 above) and ask them to support you in their own comments.

6.1 SEStran Regional Transport Strategy – **ends 11 February** [Consultation website](#)

SEStran is the Regional Transport Authority, covering Councils from Fife to the Borders, and west as far as Falkirk, and working with all the local councils. The draft Strategy covers all transport modes, including cycling and walking. It identifies 29 “transport challenges”, one of which is “*Many people do not find cycling a realistic option*” and sets out themes and policies to tackle them, including “*safe active travel*” and “*reducing car kilometres.*”

Please respond to the consultation, and send us a copy of your views to help inform the Spokes response.

6.2 Edinburgh project future consultations

Several of the entries on the Council [consultation hub](#) enable you to ask to be contacted about future consultations. These include future consultations on ...

- [Corstorphine LTN](#)
- [Leith Connections LTN](#)
- [Meadows to George Street cycle/walk route](#)
- [West Edinburgh Link cycle/walk routes](#)

6.3 East Lothian, Wallyford – **ends 28 Jan** [Consultation website](#) [Proposal maps](#)

Traffic Order for extensive new waiting/loading restrictions, especially Mason Way and near the Primary School.

Please also respond if you support the proposals and/or want them extended, as there are likely to be objections and voices of support will help counteract these. Respond by email (or post) as on the consultation website.

6.4 Midlothian – getting more people travelling actively – **ends 28 February** [Consultation](#)

Comments/ideas will feed into a new version of the Council's Active Travel Strategy, due to be published in 2022/23. There's a survey form and online mapping of proposed new cyclist routes.

7. This and that

- **School cycleroutes petition** School children have been collecting signatures for a paper petition seeking cycleroutes to all schools in the city, for safer and healthier travel to school. The petition has now also been placed online [here](#).
- **Porty Community Energy (PCE) Half-time paid job for 40 weeks**, starting early February. The job is to support PCE setting up community events and projects on low carbon heat and transport in Portobello. Full details and how to apply [here](#). Applications close 24 January.

8. Scottish Government consultations

Please do respond to all that concern you, and send us a copy of your response

8.1 Aviation Strategy – ends 21 Jan 2022 [Consultation page](#)

How compatible will the strategy be with environmental imperatives, especially given that [aviation](#) is the fastest growing source of transport emissions?

8.2 National Planning Framework 4 – ends 31 March 2022 [Consultation page](#)

A massive consultation on Scottish planning and development policies, while moving to net zero. It also has 18 proposed 'National Developments,' including a National Walking, Wheeling, Cycling network; Tram projects; and Edinburgh Waterfront. Spokes hopes to make a major response, and we'd appreciate seeing your comments.

In addition to this main NPF4 consultation, a separate consultation was held by Scottish Parliament Committees. That separate consultation is now complete and the Spokes response is [here](#). It may give you ideas for your own response to the main consultation above.

8.3 Pavement Parking prohibition

ends 11 March 2022 [Consultation page](#)

Consultation on the regulations to be adopted to implement the prohibition on pavement parking in The Transport (Scotland) Act 2019 (which also covers double parking & parking across dropped kerbs).

Spokes Planning Group has not yet commented, and we would like to hear your views. Living Streets is concerned that there is a potential loophole which would enable councils to allow pavement parking in narrow roads which would otherwise be blocked to emergency services. Living Streets is urging instead a complete ban on parking one or both sides of the road – which, incidentally would also greatly improve conditions for walking and cycling.



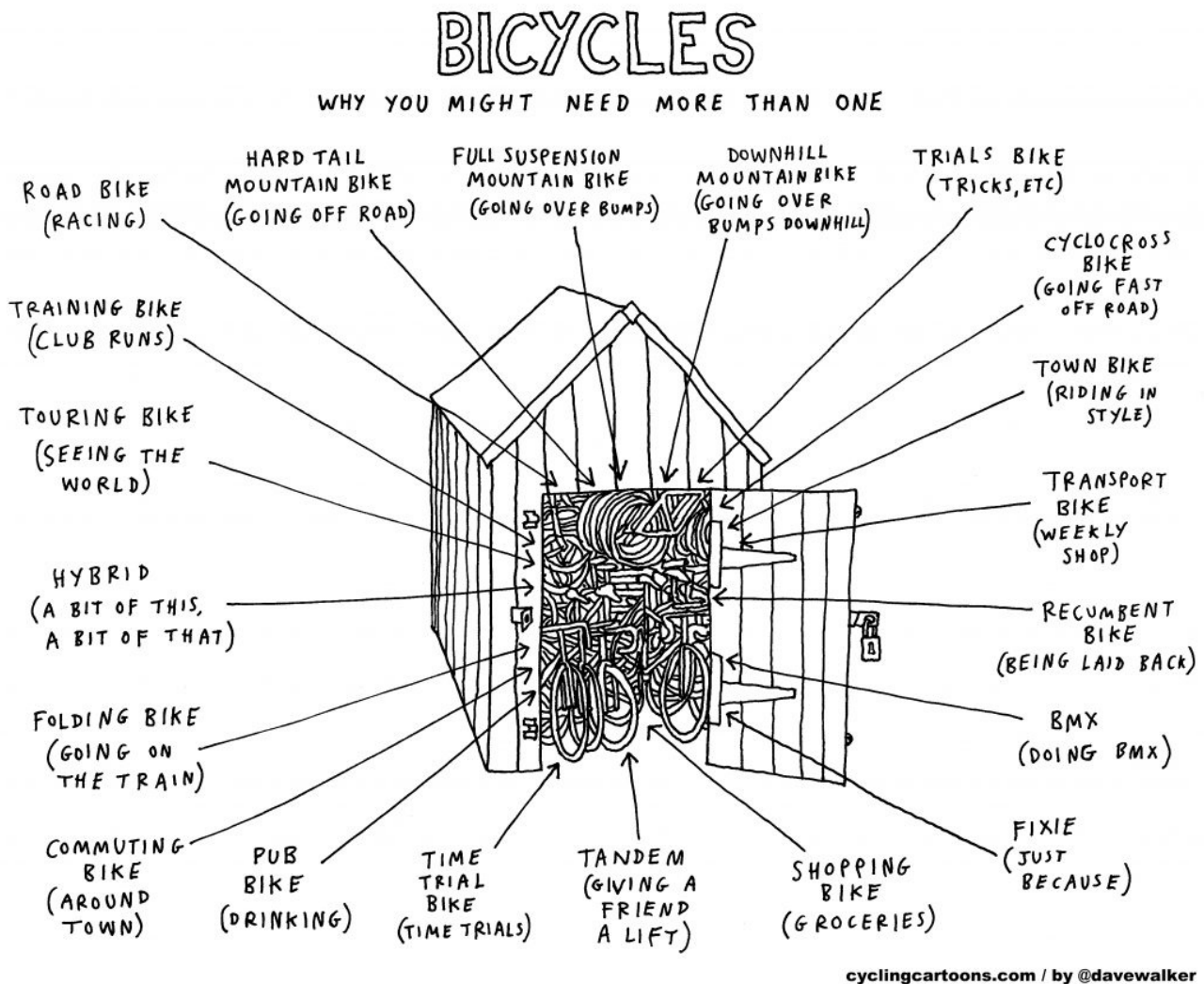
9. More & future consultations – **Check council, government, other consultations**

- ◆ **Edinburgh** consultationhub.edinburgh.gov.uk
- ◆ **Edinburgh** [Edinburgh traffic orders](#)
- ◆ **East Lothian** www.eastlothianconsultations.co.uk
- ◆ **Midlothian** <https://www.midlothian.gov.uk/directory/33/consultations>
- ◆ **West Lothian** www.westlothian.gov.uk/consultations
- ◆ **Scottish Government** consult.gov.scot
- ◆ **Transport Scotland** www.transport.gov.scot/consultations
- ◆ **Scottish Parliament consultations** yourviews.parliament.scot/consultation_finder
- ◆ **Scottish Parliament petitions** parliament.scot/get-involved/petitions
- ◆ **Just in case...** Transform Scotland keeps an updated page of current transport-related consultations... transformscotland.org.uk/whats-new/action-alerts Check it out in case there's anything important that doesn't appear in the website addresses above (there often is!)

10. Finally...

Although we have achieved a small victory over planning permission for garden bike sheds (see 2 above) it will unfortunately not be sufficient for you if you are follow the example of [Dave Walker](#), whose cartoon/ infographic we print below!

Also worth checking out Dave's new cartoon book, [From A to B](#) – cycling as a way to get around.



11. Keeping in touch

- ★ Remember to check out our [website](http://www.spokes.org.uk) every so often www.spokes.org.uk
- ★ We are active on [Twitter @SpokesLothian](#). Follow us and ReTweet tweets that you support. Recent tweets also appear on our website in the right-hand column.
- ★ If you use [Facebook](#), please like, share, etc the [Spokes Facebook page](#).
- ★ To campaign effectively Spokes needs as many supporters as possible. If you are not already a member and you like what we do, go to www.spokes.org.uk/membership.