

Spokes Action-Update 17 February 2022

spokes.org.uk St Martins Centre, 232 Dalry Road EH11 2JG 0131.313.2114 twitter [@SpokesLothian](https://twitter.com/SpokesLothian)

0. Finding your councillors

Find your ward & councillors by typing your postcode on [this page](#) [or edinburgh.gov.uk : Council & Committees : Find your Councillor]. Note that everyone has either 3 or 4 councillors, usually from assorted parties.

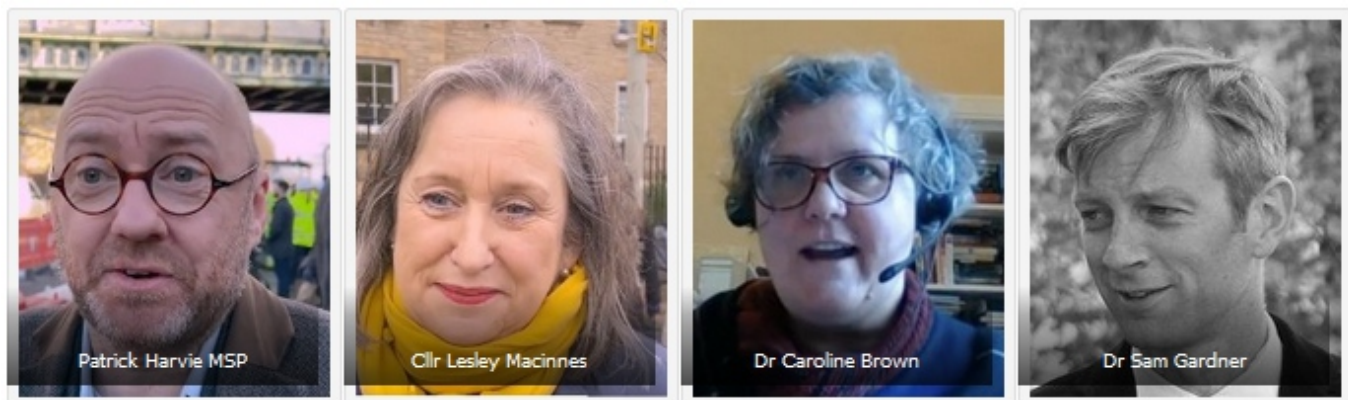
1. Traffic Reduction Commitments: #SpokesMtg 21 Feb, 7.30-9.30

The Scottish Government has made a remarkable “commitment” to reducing car-kilometres by 20% over the 2019 pre-covid figures, by year 2030 – primarily as a response to the climate crisis, although with many additional benefits for public health and community. Edinburgh City Council has followed this with a 30% ambition – albeit a “target” rather than a commitment.

Our online public meeting on Monday 21 February brings together **Scottish Government Minister [Patrick Harvie MSP](#)**, responsible for active travel policies, and **[Cllr Lesley Macinnes](#)**, the City’s Transport Convener, to explain, debate and be challenged on the route to achieving these very tough ambitions.

[Dr Caroline Brown](#), member of Spokes and of the [Transform Scotland](#) policy forum, will critique the government and council approaches; and this will be followed by our usual hour of debate between the panel members, prompted by your questions. The QA/debate will be chaired by **[Dr Sam Gardner](#)**, head of [Edinburgh Climate Commission](#).

Register (free) for the meeting [here](#). Register now, in advance, so that you don’t miss the start of the meeting.



The **Scottish Government 20% car-km reduction commitment** first appeared over a year ago, December 2020, in the [Climate Change Plan Update](#). From the outset we recognised [\[section 2\(b\)\]](#) that this was a very bold ambition which we said “*will demand exceptional determination and commitment.*”

Edinburgh’s **30% reduction in car-km by 2030** was agreed as a target at the [11.11.21 Transport Committee](#). The Council aims to meet this through actions in the [City Mobility Plan](#) (CMP), with progress (or not) being reported every two years. The CMP is part of a wider policy package including the [City Plan](#) (not yet final), [2030 Climate Strategy](#) and the [20-minute neighbourhood strategy](#).

For more about the meeting, including some of our concerns about achieving these ambitions, and also more about how the meeting will run, see our [website article](#).

What you can do

- ◆ [Register now](#) to attend the meeting and get sent a link
- ◆ Check out our full [website article](#)
- ◆ Retweet [our tweet](#) to help publicise the meeting
- ◆ Like our [facebook post](#) to help publicise the meeting
- ◆ After the meeting, respond to the [government consultation](#) on cutting car-km 20% by 2030
- ◆ Raise these issues with your councillors, and with candidates in the 5 May Council elections

2. Spokes news

CargoBike Movement

Thanks to kind donations from Spokes members, and profit from our map sales, Spokes is occasionally able to make donations to other organisations for specific work to increase everyday bike use.

We recently supported [Cargo Bike Movement](#) to improve their presence and get a prominent message out to people passing their premises at Tollcross junction. Do have a look next time you are there – and pop in if you are interested in finding out more about cargobikes.

Also read the inspiring story of how they began and how they are now developing ...

www.cargobikemovement.com/about-us



Have you seen our newly painted windows??👀👀

We're so grateful to Journeyman Signs ([instagram.com/journeymansigns](https://www.instagram.com/journeymansigns)) for bringing our ideas to life. A true artist & gent! 🙌

This was such a collaboration between many partners, but a special thanks to [@SpokesLothian](#) for support.



You and 2 others

4:35 PM · Feb 15, 2022 · Twitter Web App

7 Retweets 44 Likes

Old edition Edinburgh Spokes maps, free to good homes

Now that our new Edinburgh map is out, we still have a stock of a few 100 of the previous (2016) edition. These are available free to any community or educational organisation that can make use of them. Obviously they are not for resale, and we hope they will go to people who cannot easily afford one or would not otherwise buy one, or for educational purposes.

Already we have donated to Bikes for Refugees, to a community library and an educational establishment. We have a [factsheet showing potential uses in schools](#).

If you are involved in or know of a relevant organisation, please email office@spokes.org.uk saying how many copies you could use, and how. As we are all volunteers, please contact relevant organisations yourself in the first place, to be sure that they would potentially use the maps, and how many, before emailing us.

Wanted – a helpful nit-picking graphics assistant

During 2022 our Maps Group will be working on a new edition of the Spokes East Lothian map, to be published early 2023 to catch Spring purchases; or a slight possibility of late 2022 pre-Christmas.

For the technically knowledgeable, our cartographer, Andy, uses a GIS program, then exports layer by layer for tweaking in Adobe Illustrator. He would appreciate help from someone with a suitable graphics package (Illustrator, Affinity Designer, Corel Draw, Inkscape) and *who enjoys detail* - specifically to add missing street and place names to the town maps. Please contact Spokes if you have the relevant technical skills, time to volunteer, and love attention to detail!

Small ads - sparklewear

We are always happy to include relevant small ads from Spokes members in email circulars. Please note that this does not imply any endorsement by Spokes.

Spokes member Isi has created a small personal business making (amongst other things) attractive hi-vis vests, using screen printing and upcycled materials. Her online shop is sparklewear.co.uk.

Self-Storage

Spokes rents space at [Edinburgh Self Storage](#) (Jenners Depository) for our bulk map stocks. They currently have a 'refer a friend' offer, so Spokes could get a discount if we refer anyone who then books space. If you need to book storage space and decide to do so here, please let us refer you! Contact Peter at maps@spokes.org.uk

3. For your diary

- ◆ Feb 21, 7.30-9.30 [Spokes Public Meeting, Traffic Reduction Commitments](#) – see page 1 above
- ◆ Feb 26, 2pm [Edinburgh Critical Mass](#) – meeting at Middle Meadow Walk
- ◆ March 6, 10am-3pm [Cargo Bike Curious](#) – family (and everyone) event
“Are you curious about cargo bikes? Heard of them, but not sure what the fuss is all about? Wondering if a cargo bike could work for you and your family? Well, this event is for you! [Cargo Bike Movement](#) is organising a Cargo Bike Curious event, bringing together cargo bikes from [Laid Back Bikes](#), [Hart’s Cyclery](#), [Soul Cycles](#) and the [EdFoC Urban Arrow cargo bike](#), for you to try out. [Spokes Cycle Campaign](#) will also be there, offering their legendary cycle maps and advice on getting about the city by bike. “
- ◆ March 11, 19.15-20.45 [Our Streets Our Nights](#)
“Join us, the InfraSisters, for a fabulous #OurStreetsOurNights mass cycle ride around Edinburgh’s historic city centre. We’ll be riding for night-time cycling infrastructure that is safe and comfortable for women and girls. Our previous ride, #LightUpTheNight, was so successful that we are back by popular demand.”
- ◆ March (late March) [Spokes online Hustings](#) for the 2022 Local Elections. Details will be at [spokes.org.uk](#)
- ◆ April 23 [Pedal on Parliament](#) *provisional* date. Details will be at [pedalonparliament.org](#)
- ◆ May 5 [Local Council Elections](#) across Scotland (and UK) There will be election info on the Spokes website nearer the time. Make sure you are [registered to vote](#) (by 18 April) - and for a postal vote if wanted. We will also be working with, and supporting, [Walk Wheel Cycle Vote](#) – website info later.



4. Cyclerroute developments

4.1 West Lothian cyclerroute plans

An interesting recent [report by West Lothian Council](#) lists a wide range of cyclerroute projects – most of which are however only at the stage of plans and do not yet have cash in place, and/or may require land negotiations. Seven of the studies (1-7 below) were funded by SEStran, the South East Scotland Regional Transport Authority, as part of their planned regional 'cross boundary' cycle network; two (a,b) are in conjunction with Sustrans, and the others are largely council internal. The report only includes a para or so about each, no further detail, but anyone interested could contact [WL council](#), [SEStran](#), or (if you live in WL) [your councillors](#).

- 1) B8046 Ecclesmachan – Threemiletown
- 2) A89 Wester Dechmont – Ex-Bangour General Hospital – Blackcraig Rd
- 3) A89 Parallel Route – Easton Road, Bathgate to Armadale
- 4) A904 Newton – South Queensferry
- 5) A803 / A904 Linlithgow – Bo’ness (Links to Blackness & Falkirk).
- 6) B7008 West Calder – Harburn
- 7) Bathgate Hills Quiet Roads Initiative.
 - a) National Cycle Route 75 – Blackridge Station
 - b) National Cycle Route 75 – East Calder, via Kirknewton, to Balerno

“Transportation Services are also involved with a number of other active travel schemes across West Lothian that are currently being progressed” ...

- A706/B7066 - Whitdale Roundabout Connection;
- A706/B7066 - Whitdale Roundabout to Boghead Roundabout;
- B7066 Heartlands to Whitdale Roundabout;
- Capstan Walk, Linlithgow - cyclepath improvements;
- Bathgate Water Regeneration Active Travel Links;
- Blackburn Corridor;
- Edinburgh Road, Bathgate - segregated cycleway;
- Stoneyburn Links Bents to A701;
- Stoneyburn Links - Stoneyburn to Addiewell;
- Wester Inch to Whitehill Ind Estate Link; and
- Whitburn Town Walk Improvements - Phase 2.

4.2 CCWEL

Eight years after it was first discussed at Edinburgh Council Transport Committee, work has at last begun on the City Centre West-East Link, Roseburn to Leith Walk, marked by a 'ground-breaking' ceremony attended by the Active Travel Minister, Patrick Harvie. The reasons for such a long gestation are many and various, including fierce objections, political disagreements, a period of council-wide staff cuts and, perhaps worst of all, Scottish Government regulations which caused a (literally) 2-year government inquiry into objections which eventually were almost entirely dismissed – this delay itself resulting in significant cost increases, which in turn led to further delay whilst bits of the project were cut.

There is a major article on the history of the project, with its many twists and turns, on the Spokes website [here](#) - have a read – you may find occasions where you remember contacting your councillor, coming to an event, or helping in some other way!

If you use twitter, please retweet [our tweet](#) about the CCWEL story.



Melville Street CCWEL visualisation

4.3 Leith Walk

The [original plans](#) for the Leith Walk tramline were disastrous for cycling, with an attempt to maintain existing traffic levels, onroad bike lanes and, at one point, cyclists in a single traffic lane with parked vehicles on one side and tramlines on the other. After extensive campaigning the plans were [drastically revised](#), to cut down car lanes, thus allowing for segregated bike lanes on each side and (in most places) wider footways.

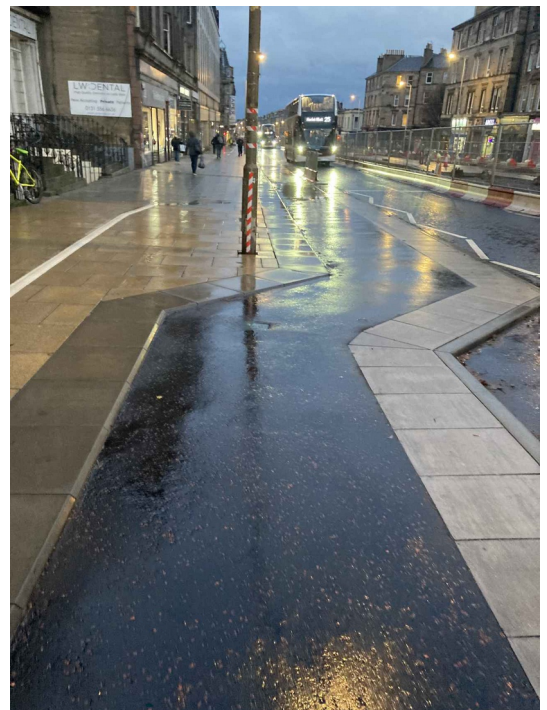
However, the bike lanes (and footways) formed part of the overall tram contract, handed over to Trams to Newhaven for detailed design and construction along with the tramlines, rather like what happened with the first tramline. Sadly consultation on the detailed design of the Leith Walk cycleroutes under this regime has left much to be desired and the largely complete Leith-bound cycle lane is very disappointing, and certainly not of the same standard as the council-designed CCWEL which will connect to it, or other council-designed segregated routes.

There are several problems - one of the worst is the inadequate height differences between cycleway and footway. According to the RNIB, blind people require a height difference of at least 50mm, and indeed 60mm is specified in the Scottish Government's official [Cycling by Design](#) [page 73]. Instead, a variable height difference of maximum 25mm has been used – doing little to stop cyclists moving onto the footway, whether deliberately or accidentally, which seems probable at some of the sharp bends built into the design - we have already heard of one cyclist who came off their bike, thought to be due to the unsuitable kerbing. A clear and consistent height difference is also more helpful to pedestrians in general, to minimise trip risks.

There should also be a kerb providing height segregation between the cycleway and the buffer area next to the carriageway.

Spokes has worked with Edinburgh Access Panel to try to get change, but to no avail so far, and the same is still intended for the Edinburgh-bound cycle lane, now beginning construction. It is so disappointing that the campaigning success of getting protected cycle lanes has been followed by poor design.

If you do use or will be using Leith Walk and are unhappy, all we can suggest at this stage is to contact your councillors (Section 0 on p1) – and please copy your email to spokes@spokes.org.uk.



25mm kerb on left, sharp bends, 0mm kerb to buffer on right

5. Edinburgh/Lothians area consultations [see also spokes.org.uk/consultns]

Please respond to any of the consultations below which cover areas where you live, work or visit. If you respond by email, please send us a copy; otherwise please let us know of any main concerns or thoughts which you'd like considered for possible inclusion in official Spokes responses. You could also send your points to your local councillors (section 0 above) and ask them to support you in their own comments.

5.1 Edin Cycle Hire, survey of former users – **end 27 Feb**

The council is planning a new bike hire scheme, and is surveying users of the previous scheme, to find out what you did and didn't like about it.

The online survey is [here](#).

The survey is multiple choice, but with an open-ended Q11 allowing you to enter any thoughts not covered by the MCQ questions. If you want to comment in even more detail, or have questions, email...

ActiveTravel@edinburgh.gov.uk with a subject line of *Cycle Hire Scheme*.



Lovely drawing by @edinsketcher

5.2 Cameron Toll Centre redevelopment including residential, hotel, and ped/cycle routes

Online consultation at camerontoll.co.uk/home/consultation **Closing date extended to 2 March**

In the 'Feedback' section you can either respond online or download a response form.

Questions: camerontoll@libertyone.co.uk

Some points you might like to consider making...

- (a) there seem several potentially useful missing cycleroute links, including around the hotel, along the south edge of the site, and from the hotel to Gilmerton Road
- (b) is the orange "retail and community" dotted line open to bikes?
- (c) cargobike/trailer parking needed
- (d) cycle routes and parking facilities should meet latest quality standards including Transport Scotland's [Cycling by Design](#) and Edinburgh Council's new [cycle parking factsheet](#)

5.3 Granton Gasholder project – **ends 27 Feb**

Edinburgh has won a substantial amount of cash from the UK government to restore Granton Gasholder as an innovative community space. Whilst the immediate project is not about transport, this is central to the whole Granton redevelopment in which active travel and wider sustainability are integral. The consultation pages set the Gasholder project into this wider context. The consultation is [here](#).

There is a [further consultation](#) [**ends 28 Feb**] about what community benefits people would like to see in Granton Waterfront area, paid for by developer contributions.

5.4 Edinburgh Traffic Regulation Orders - **various closing dates, Feb 18-March 4**

Various draft TROs are at their first stage of consultation – where comments can be made, but before they are publicly advertised for objections. You can find them [here](#). They include (with closing dates)...

- Feb 18 Meadows to George Street [for the MGS active travel project]
- Feb 25 Bridge Street [waiting/loading]
- Feb 25 Deanhaugh St [waiting/loading]
- Mar 4 Newbattle Terr [waiting/loading – for the local environmental improvement scheme]
- Mar 4 Telford Road [waiting]

5.5 Edinburgh project future consultations

Several of the entries on the Council [consultation hub](#) enable you to ask to be contacted about future consultations. These include future consultations on ...

- [Corstorphine LTN](#)
- [Leith Connections LTN](#)
- [Meadows to George Street cycle/walk route](#)
- [West Edinburgh Link cycle/walk routes](#)

5.6 Midlothian – getting more people travelling actively – **ends 25 Feb** [Consultation](#)

Comments/ideas will feed into a new version of the Council's Active Travel Strategy, due to be published in 2022/23. There's a survey form and online mapping of proposed new cyclist routes.

"The strategy will set out new priorities and measures that can be taken to increase active travel levels, improve active travel information, access and infrastructure in Midlothian."

5.7 Wallyford Traffic Order – **closes March 18** [Consultation](#)

"waiting / loading restrictions at various locations within Wallyford and around the new Primary School to control indiscriminate parking and improve the free flow of traffic"

6. Scottish Government consultations

Please do respond to all that concern you, and send us a copy of your response

6.1 Car 20km reduction route map – **ends 6 April 2022** [Consultation page](#)

See article on page 1 of this Action-Update.

6.2 National Planning Framework 4 – **ends 31 March 2022** [Consultation page](#)

A massive consultation on Scottish planning and development policies, while moving to net zero. It also has 18 proposed 'National Developments,' including a National Walking, Wheeling, Cycling network; Tram projects; and Edinburgh Waterfront. Spokes hopes to make a major response, and we'd appreciate seeing your comments.

In addition to this main NPF4 consultation, a separate consultation was held by Scottish Parliament Committees. That separate consultation is now complete and the Spokes response is [here](#). It may give you ideas for your own response to the main consultation above.

6.3 STPR2, Strategic Transport Projects Review – **ends 15 April 2022** [Consultation page](#)

Decisions on major Scottish Transport projects to be delivered over the next 20 years. The document marks a move away from a long list of major road projects to more emphasis on sustainable and active travel, and local living. There is much in it that needs support and also where improvement is needed. Locally relevant proposals include a national active travel network, major metro/tram expansion, and the Waterfront.

In addition to the above consultation page, we have listed other relevant documents [here, para 2201 STPR2](#).

6.4 Pavement Parking prohibition - **ends 11 March 2022** [Consultation page](#)

Consultation on the regulations to be adopted to implement the prohibition on pavement parking in The Transport (Scotland) Act 2019 (which also covers double parking & parking across dropped kerbs).

Spokes Planning Group has not yet commented, and we would like to hear your views. Living Streets is concerned that there is a potential loophole which would enable councils to allow pavement parking in narrow roads which would otherwise be blocked to emergency services. Living Streets is urging instead a complete ban on parking one or both sides of the road – which, incidentally would also greatly improve conditions for walking and cycling.

7. More & future consultations – *Check council, government, other consultations*

- ◆ Edinburgh consultationhub.edinburgh.gov.uk
- ◆ Edinburgh [Edinburgh traffic orders](#)
- ◆ East Lothian www.eastlothianconsultations.co.uk
- ◆ Midlothian <https://www.midlothian.gov.uk/directory/33/consultations>
- ◆ West Lothian www.westlothian.gov.uk/consultations
- ◆ Scottish Government consult.gov.scot
- ◆ Transport Scotland www.transport.gov.scot/consultations
- ◆ Scottish Parliament consultations yourviews.parliament.scot/consultation_finder
- ◆ Scottish Parliament petitions parliament.scot/get-involved/petitions
- ◆ Just in case... Transform Scotland keeps an updated page of current transport-related consultations... transformscotland.org.uk/whats-new/action-alerts Check it out in case there's anything important that doesn't appear in the website addresses above (there often is!)

8. Keeping in touch

- ★ Remember to check out our **website** every so often www.spokes.org.uk
- ★ We are active on **Twitter** [@SpokesLothian](#). Follow us and ReTweet tweets that you support. Recent tweets also appear on our website in the right-hand column.
- ★ If you use **Facebook**, please like, share, etc the [Spokes Facebook page](#).
- ★ To campaign effectively Spokes needs as many supporters as possible. If you are not already a member and you like what we do, go to www.spokes.org.uk/membership.