

# Spokes Action-Update 25 March 2022

[spokes.org.uk](https://spokes.org.uk) St Martins Centre, 232 Dalry Road EH11 2JG 0131.313.2114 twitter [@SpokesLothian](https://twitter.com/SpokesLothian)

## 0. Finding your councillors

Find your ward & councillors by typing your postcode on [this page](#) [or [edinburgh.gov.uk](https://edinburgh.gov.uk) : Council & Committees : Find your Councillor]. Note that everyone has either 3 or 4 councillors, usually from assorted parties.

## 1. Election Info

Council elections take place on May 5<sup>th</sup> and are critical to cycling and transport policies and budgets for the next five years in Edinburgh and in every council across Scotland.

We've an [election article](#) which will hopefully tell you most of what you will need to know, including...

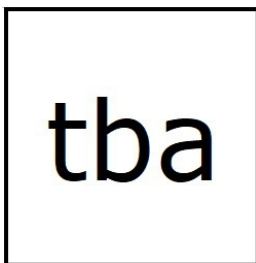
- **party manifestos** (when published – only Labour so far) plus the **Spokes manifesto**
- **how to maximise the value of your vote** under the voting system used
- **hustings by other bodies** – please go along and ask transport/ cycling/ environment questions. *Please send us a website or other link to any hustings you hear of, so we can add them to our list*
- **other websites** useful for the election, including Scotland-wide election info and ideas from [WalkWheelCycleVote](#) and [CyclingUKScotland](#)

## 2. Spokes Hustings: Monday 28 March, 7.30-9.30

Our own hustings (a webinar) has the theme: **Transport policy with particular reference to cycling**

**Register (free) for the meeting [here](#). Register now, in advance, so that you don't miss the start of the meeting.**

We've invited a representative from each main party on the Council, and your Council hopefuls will be...



Conservative



Green: Cllr Claire Miller  
City Centre



Labour: Cllr Scott Arthur  
Colinton/Fairmilehead



LibDem: Sanne Dijkstra-  
Downie, Forth



SNP: Cllr Lesley Macinnes  
Liberton/Gilmerton

Each candidate will have 5 minutes to outline their case and this will be followed by our usual hour of QA, when candidates will have to defend themselves and their parties against your taxing and articulate questions!

Please try to think up questions which might differentiate between the candidates, as there's always a danger of everyone agreeing most of the time. Perhaps that is good! - but it doesn't help you in deciding how to vote.



The QA will be chaired by [Ewan Maclean](#) of [Blackford Safe Routes](#)

### What you can do now

- ◆ [Register now](#) to attend the meeting and get sent a link
- ◆ Think up questions – email them in advance to [spokes@spokes.org.uk](mailto:spokes@spokes.org.uk) or ask during the webinar. You may get ideas by reading the [Spokes manifesto](#) in (3) below
- ◆ Check out our full [election article](#)
- ◆ Retweet our tweets to help publicise [the meeting](#) and the [election article](#)
- ◆ Tell us about any hustings you hear of which are not yet listed in our election article
- ◆ Make sure you are [registered to vote](#) (by 18 April) - and considering requesting a postal vote.

### 3. Spokes manifesto for Edinburgh City Council Election 2022

Our [manifesto](#) was sent to all parties and publicised on social media, in the hope of influencing party manifestos. Use our points to question candidates at our public meeting webinar, or when they call at your door, or by email. When speaking to candidates, it's always really useful to link your concerns to a particular location, problem or opportunity in the local area where you live and where the candidate is standing.

#### Safety, Vision Zero

- A top-level aim of zero deaths and serious injuries on our roads and footways.

#### Traffic Reduction

- Reduce car-km 30% by 2030 - endorse and act on this existing commitment
- All departments, not just Transport, to actively support the 30% commitment - for example, decisions on planning applications
- A staged programme of reduced on-street parking provision and increased enforcement
- Avoid any road capacity expansion and use budgets instead for sustainable modes.

#### Cycle Network

- A comprehensive cycling network, safe and welcoming for all ages and abilities
- High emphasis on protected infrastructure on direct and well-lit main-road routes, including improved and permanent Spaces for People infrastructure
- Accelerate long-delayed schemes, including CCWEL, Meadows to George Street, and cycle exemption in one-way streets
- [Cycling by Design](#) to be the basis of all cycling provision, including in planning as well as transport.

#### Cycle accessibility and supporting infrastructure

- Urgent action on a replacement cycle hire scheme, and inclusion of non-standard machines, notably cargo bikes
- Further expansion, to meet current and future demand, of the Cyclehoop secure cycle storage scheme
- Quality bike parking (Sheffield racks with crossbar), and ebike charging, in town centre shopping streets
- Tackle the pothole scourge and ensure that active travel infrastructure is built into road maintenance work.

#### Resourcing

- Maintain and increase Edinburgh's UK-leading policy of allocating 10% of transport capital and revenue budgets to cycling, given the rudimentary extent of the existing cycle network. Capital is for new schemes, whilst revenue tackles ongoing issues such as path maintenance and gritting
- Ensure adequate funding to maintain the existing pavement network at a good standard, with additional funding for footway enhancements such as pedestrian and toucan crossings, dropped kerbs, etc.



## 4. Edinburgh/Lothians area consultations [see also [spokes.org.uk/consultns](https://spokes.org.uk/consultns)]

*Note: because of the local elections, there are fewer consultations than usual – only the ones, such as Traffic Regulation Orders, where the Transport Committee has already approved consultation.*

**Please respond to any of the consultations below which cover areas where you live, work or visit.** If you respond by email, please send us a copy; otherwise please let us know of any main concerns or thoughts which you'd like considered for possible inclusion in official Spokes responses. You could also send your points to your local councillors (section 0 above) and ask them to support you in their own comments.

### Edinburgh Traffic Regulation Orders - **closing dates as below**

**You can find TROs which are being consulted on [here](#).** There are two consultation stages..

a. **First stage consultation**, also known as **stakeholder consultation** This is a fairly informal consultation where you can comment but if you say 'object' it has no legal force. The consultation is always notified to stakeholder groups such as Spokes, as well as bus, fire, etc. The public are also welcome to comment, but it is up to the council whether to advertise it widely or not. At this stage the Council sometimes just publishes the plans, without the accompanying documentation which comes in stage (b) below.

b. **Advertisement stage** also known as **objections stage**. Following the stakeholder consultation the council may choose to modify the plans, or not. The plans must then be widely advertised to the public for comments and objections. Objections are reported to the Transport Committee and certain types of objection, if not withdrawn, have to be referred to the Scottish Government for a final decision.

**There are two, maybe three, very important TROs undergoing these processes, as below. Please comment on all that concern you. Send your comments to [TRO.Consultations@edinburgh.gov.uk](mailto:TRO.Consultations@edinburgh.gov.uk) quoting the TRO reference number below..**

*Note: It is a good idea to comment **in support** if you like a proposal, since this helps to balance objections*

#### **TRO/19/09 30mph/40mph speed reductions – closing date 8.4.22**

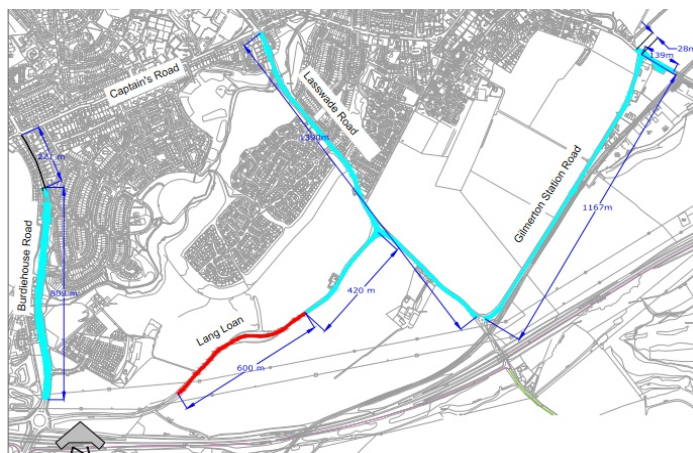
*This is at stage (b) above, so you can comment and/or object*

The Order will reduce speeds to **30mph** on parts of

- Burdiehouse Road
- Gilmerton Station Road
- Lasswade Road
- Lang Loan

and to **40mph** on other stretches of Lang Loan (red).

We find it hard to understand why the 40mph, rather than 30, for this short section of Lang Loan – which also includes bends and ups and downs. We will probably object.



#### **TRO/21/22 Foot of Walk to Ocean Terminal – closing date 15 April**

This is at stage (a). We have only just heard as we write - it appeared on the [Traffic Orders page](#) today.

This long-awaited TRO continues the Leith Walk cycle route to Ocean Terminal, avoiding the new tramlines. We are disappointed not to have been consulted on the details earlier, despite many requests, but will be scrutinising the plans carefully. *Please send us your thoughts (asap) as well as commenting to the council.*

#### **ETRO/??/?? Spaces for People / Travelling Safely – not yet published**

This is the Order to convert the existing Spaces for People facilities from Temporary TROs (TTRO) to Experimental TROs (ETRO). The stakeholder consultation happened in November (details & Spokes response [here](#)).

We have been expecting the advertisement/objections stage for weeks, but it has not yet happened. However, the government late in 2021 changed the rules on ETROs, to reduce the admin for Councils. We had understood that this Order was being processed under the old rules, but it is possible that intentions have changed, in which case it may be possible for the Experimental Orders to come into force prior to consultation, so they may or may not turn up on the Traffic Orders site any time soon – we will try to find out.



## 5. For your diary

- ◆ March 26 **Play Street road closure** 9am-1pm, Spottiswoode Road/Street junction
- ◆ March 26 **Critical Mass Ride, Edinburgh** Meet 2pm Middle Meadow Walk
- ◆ March 27 **CargoBike try-out event, Musselburgh**, 10am-3pm – with Spokes stall
- ◆ March 28 **Spokes online Hustings** for the 2022 Local Elections. See page 1
- ◆ April 12 **Living Streets election hustings**
- ◆ April 23 **Pedal on Parliament** For details see [pedalonparliament.org](https://pedalonparliament.org)
- ◆ May 5 **Local Council Elections** across Scotland (and UK) . See page 1
- ◆ April 9-24 **Edinburgh Science Festival** many climate-related events plus [cargobike-based Street Science](#).



Show | All Ages

### Street Science

With mind-boggling experiments and dazzling science demonstrations, our busking bikes take street performance to a whole new level. Witness explosions, weirdness and plenty of mess.

Look out for our *Street Science* team around town in the run up to and during the Science Festival. Follow us on Twitter @EdSciFest for real-time updates.

Date & Time

Various dates throughout the Festival  
Times vary | Drop-in

Price

Free

## 6. Scottish Government consultations

*Please do respond to all that concern you, and send us a copy of your response*

### 6.1 Car 20km reduction route map – ends 6 April 2022 [Consultation page](#)

A draft Spokes response will soon be available in lower para 2201 [here](#). Your response can be much shorter!

### 6.2 National Planning Framework 4 – ends 31 March 2022 [Consultation page](#)

A massive consultation on Scottish planning and development policies, while moving to net zero. It also has 18 proposed 'National Developments,' including a National Walking, Wheeling, Cycling network; Tram projects; and Edinburgh Waterfront. A draft Spokes response is [here](#). Your response can be much shorter, concentrating on any points that particularly concern you.

### 6.3 STPR2, Strategic Transport Projects Review – ends 15 April 2022 [Consultation page](#)

Decisions on major Scottish Transport projects to be delivered over the next 20 years. The document marks a move away from a long list of major road projects to more emphasis on sustainable and active travel, and local living. There is much in it that needs support and also where improvement is needed. Locally relevant proposals include a national active travel network, major metro/tram expansion, and the Waterfront.

In addition to the above consultation page, we have listed other relevant documents [here, para 2201 STPR2](#).

## 7. Spokes news

### 7.1 Infrasisisters

Spokes was delighted to make a donation to the new [Infrasisisters](#) group who are campaigning for cycling conditions safe and welcoming for women, particularly at night. Our donation helped the purchase of tabards for stewards at the amazing recent 200-strong [#OurStreetsOurNights](#) evening urban ride.

### 7.2 Old edition Edinburgh Spokes maps, free to good homes

We still have a supply of the previous (2016, with 2019 updates) edition. These are free to any community or educational organisation that can make use of them. Obviously they are not for resale, and we hope they will go to people who cannot easily afford one or would not otherwise buy one, or for educational purposes.

Already we have donated to Bikes for Refugees, to a community library and an educational establishment. We have a [factsheet showing potential uses in schools](#).

If you are involved in or know of a relevant organisation, please email [office@spokes.org.uk](mailto:office@spokes.org.uk) saying how many copies you could use, and how. As we are all volunteers, please contact relevant organisations yourself in the first place, to be sure that they would potentially use the maps, and how many, before emailing us.

### 7.3 Website updates

To give an idea of the kind of things [Spokes Planning Group](#) gets up to, see the recent documents below. Find more via our [consultations page](#). *Planning Group welcomes new volunteers to help with such submissions, for both local and national developments.*

- **Newbattle Terrace** environmental/traffic changes – see para 2202 [here](#)
- **South Queensferry**, access routes to Forth Bridge Experience visitor centre – para 2203 [here](#)
- **West Lothian Council**, future of Spaces for People – para 2203 [here](#).
- **Pavement Parking**, draft Scottish Government regulations – top para 2112 [here](#)
- **NPF4 National Planning Framework** – lower para 2111 [here](#). The Spokes submission is not yet in (closes 31 March) but is in draft [here](#)
- **Government Route Map for 20% car-km reduction** – lower para 2201 [here](#). The Spokes submission is not yet in (closes 6 April) but a draft will be in this para in the next few days

## 8. Local routes news

### 8.1 Friends of the Greenbank-Meadows Quiet Route

The Council's quiet route here has generated large amounts of controversy, with a fair bit of misleading comment as well as some great pictures and stories about how it has [improved active travel conditions, not least for school journeys](#).

Now a [Friends of the Quiet Route](#) group has been set up, founded by Blackford Safe Routes and Spokes South Edinburgh, also backed by Edinburgh Bike Coop, to support, promote and improve the route.

The Friends are running a [Spring Treasure Hunt Challenge](#). The clues can be followed at any time, but entries submitted up to April 20 will be entered in a prize draw to win vouchers for Edinburgh Bicycle shop on Alvanley Terrace, which is on the Quiet Route.

To get involved with the Friends or join their mailing list, see the Contact Us tab on their website [sites.google.com/view/friendsofthequietroute/home](https://sites.google.com/view/friendsofthequietroute/home)



## 8.2 Leith Walk cycleroutes

The big disappointment over the quality of the new (not yet officially open) Leith Walk cycleroute was covered in our [Feb 17 member circular](#) (section 4.3). Spokes has throughout made strenuous efforts to engage with the Trams to Newhaven designers, but consultation has often been desultory. However, so strong has been the feedback from many directions, including on social media, culminating in an inspection visit by Scotland's Active Nation Commissioner, Lee Craigie, that some improvements are to be made, with additional cash from the government (presumably via Sustrans). **If you contacted councillors about this, thank you!**

We are still concerned about insufficient stakeholder consultation on detailed design, though there are signs that consultation may be improving. The mitigations are expected to include the following, over the next few months

- reducing the sharper bends
- relaying a smoother surface in parts
- considering covers at gully hazards for bikes which have to divert onto the kerbside buffer zone
- investigating steps to provide better height segregation so blind people can better identify the cycleway

Note that details of the continuation route to Ocean Terminal (which are by the Council Active Travel team rather than Trams to Newhaven) have just been published for consultation – see (5) above, TRO/21/22.

## 8.3 Russell Road injury

There have been many complaints to councillors over the years, by individuals and by Spokes, about the [dangerous right turn from Russell Road onto the ramp](#) at the start of the Roseburn cycleroute. Cyclists have to wait in the middle of the road whilst oncoming traffic bends around them. When an inattentive motorist cuts the corner, the waiting cyclist is at grave risk. A cyclist has now been injured in a crash with this exact cause.

We have now been told that a central island to protect cyclists waiting to turn is going to be “looked at” and probably installed this year. *If you live or travel in the area, please ask your councillors/candidates to make sure this happens.* Several candidates have already been following the issue on social media.



## 9. More & future consultations – *Check council, government, other consultations*

- ◆ **Edinburgh** [consultationhub.edinburgh.gov.uk](https://consultationhub.edinburgh.gov.uk)
- ◆ **Edinburgh** [Edinburgh traffic orders](#)
- ◆ **East Lothian** [www.eastlothianconsultations.co.uk](http://www.eastlothianconsultations.co.uk)
- ◆ **Midlothian** <https://www.midlothian.gov.uk/directory/33/consultations>
- ◆ **West Lothian** [www.westlothian.gov.uk/consultations](http://www.westlothian.gov.uk/consultations)
- ◆ **Scottish Government** [consult.gov.scot](https://consult.gov.scot)
- ◆ **Transport Scotland** [www.transport.gov.scot/consultations](http://www.transport.gov.scot/consultations)
- ◆ **Scottish Parliament consultations** [yourviews.parliament.scot/consultation\\_finder](https://yourviews.parliament.scot/consultation_finder)
- ◆ **Scottish Parliament petitions** [parliament.scot/get-involved/petitions](https://parliament.scot/get-involved/petitions)
- ◆ **Just in case...** Transform Scotland keeps an updated page of current transport-related consultations... [transformscotland.org.uk/whats-new/action-alerts](https://transformscotland.org.uk/whats-new/action-alerts) Check it out in case there's anything important that doesn't appear in the website addresses above (there often is!)

## 10. Keeping in touch

- ★ Remember to check out our **website** every so often [www.spokes.org.uk](http://www.spokes.org.uk)
- ★ We are active on **Twitter** [@SpokesLothian](#). Follow us and ReTweet tweets that you support. Recent tweets also appear on our website in the right-hand column.
- ★ If you use **Facebook**, please like, share, etc the [Spokes Facebook page](#).
- ★ To campaign effectively Spokes needs as many supporters as possible. If you are not already a member and you like what we do, go to [www.spokes.org.uk/membership](http://www.spokes.org.uk/membership).