

Spokes Action-Update 30 April 2022

spokes.org.uk St Martins Centre, 232 Dalry Road EH11 2JG 0131.313.2114 twitter [@SpokesLothian](https://twitter.com/SpokesLothian)

0. Finding your councillors

Find your ward & councillors by typing your postcode on [this page](#) [or edinburgh.gov.uk : Council & Committees : Find your Councillor]. Note that everyone has either 3 or 4 councillors, usually from assorted parties.

1. Election Info – Council elections May 5th

Council elections take place on May 5th and are critical to cycling and transport policies and budgets for the next five years in Edinburgh and in every council across Scotland.

We've 3 articles around the election...



- Our main [election article](#) which hopefully tells you most of what you need to know, including...
 - **how to maximise the value of your vote** under the STV voting system
 - **other websites** useful for the election, including Scotland-wide election info and ideas from [WalkWheelCycleVote](#) and [CyclingUKScotland](#)
- A report on the excellent [Spokes Election Hustings](#) attended by 70 people – including a full video
- A full [manifesto analysis](#) for the main parties standing in Edinburgh – see below and page 2.

Deciding how to vote??

Although we have compared **party manifestos**, it is worth also checking out the **individual candidates** in your ward – and then use the great opportunities provided by the **STV voting system** to make your final decisions. This is discussed further in our [Hustings Report](#) – see the section called *Deciding Your Vote*.

Lothians Councils

In smaller Councils it is common for parties not to issue manifestos. Those Lothians manifestos we know of are listed in our [main elections article](#) but, as there are so few, we have not done any comparative analysis. If you know of any other Lothians manifestos, tell us, and we will add a link to them.

Edinburgh Council, manifestos analysis

See our full article here... <http://www.spokes.org.uk/2022/04/council-election-2022-manifestos-analysis/>

Top line summary...

The [Green](#) manifesto comes out best for cycling and active travel (AT).

[Labour](#) and [SNP](#) are also pretty good, although with different emphases from each other. Labour comes out particularly well in the cycling and walking funding categories, whilst SNP has welcome new policies on deterring car commuting.

- **Tops** – Green
- **Good** – Labour & SNP
- **Medium** – LibDem
- **Disappointing** – Conservative

[Lib Dems](#) have some good promises, but say nothing on cash or connected networks, and they hint at removing some Spaces for People schemes.

Apart from bike hire enthusiasm, the [Conservative](#) manifesto largely disappoints. In particular, most Spaces for People schemes would go.

PTO for our table summarising the manifestos on relevant aspects.

Edinburgh Council - manifestos analysis table [also available as a pdf [here](#)]

Key to table: each entry begins with one of the following codes...

- N not in manifesto: the party may be keeping options open, or continue existing policy, or uninterested
- ++ excellent
- + good e.g. topic mentioned positively but not much detail
- = mixed/unclear
- disappointing

Obviously some of the individual codings are arguable, but we think the summary on page 1 is pretty fair.

Issue	Conservative	Green	Labour	LibDem	SNP
Cycling % of transport budget <i>[this is complex - see note 1 below]</i>	--- scrap the 10% cycling allocation	++ at least 10% for cycling [1]	++ 15% for active travel [1]	N	+ Capital sum instead of % [1]
Onroad safe/protected routes & network	= [4]	++	++	N [5]	++
Increased cash for road/path/ footway repair	+ amounts not specified	+	++ 20% more for footway maintenance	+ “millions of £ extra” but how much not stated	+
Cash for ped crossing & footway enhancements	N	+	++ 20% more for ped crossings	+	+
Cycle hire scheme	++	++	+ [2]	+ [2]	++
Onstreet secure storage	N	++	N [3]	N [3]	+
Traffic reduction - charging	– oppose Workplace Parking Levy	++ Congestion charge <i>and</i> Workplace Parking Levy	N	+ Consult on Workplace Parking Levy	++ Commuter charge <i>and</i> Workplace Parking Levy
Traffic reduction – parking restrictions	– oppose more parking restrictions	++ The most comprehensive manifesto on this	+ Reduced commuter parking opportunities	=	+
Speed limit reductions	N	N [3]	N [3]	N[3]	N [3]
School safer routes/ streets	+	++	N [3]	++	++
2030 Net Zero [not just transport]	Postpone 2030 to unspecified date	++ The most comprehensive manifesto on this	++	++	++
Air pollution	Scrap LEZ or just Princes St	++	+	++ widen the LEZ	+
LTNs, 20-min nbds, etc	N	++	+	++	++
Other relevant major promises	-- Remove most Spaces for People schemes	+ Lobby ScotGov for full non-residential parking levy powers	+ Seek through-ticketing for bus, tram, rail & bike-hire		+ Improve last-mile delivery, incl cargobikes

[1] Current Council policy allocates 10% of transport budgets (capital & revenue) to cycling, a policy we think unique inUK. This is then used to attract substantial match-funding, notably government cash via Sustrans. Much of this benefits walking too, and separate cash is used to enhance the existing extensive pedestrian footway network, e.g. new pedestrian crossings.

This year’s manifestos are very varied on cycle and AT cash. **Greens** continue the above policy; **Labour** ups the 10% to 15% but makes it ‘active travel (AT)’ i.e. cycling, wheeling, walking; **LibDems** don’t mention cycling cash at all and **Conservatives** promise to abolish the 10% cycling percentage. The **SNP** no longer commits to a % but promises £118m AT capital investment over the next 5 years – this presumably is the Council’s already agreed £118m [active travel investment programme \(ATINP\)](#), of which just £20m is the Council’s own transport capital – probably somewhat less than the Greens’ 10% cycling commitment or Labour’s 15% Active Travel, and is a commitment on transport *capital* only, not also *revenue* (e.g. gritting, maintenance).

[2] Restore bike hire scheme if sponsorship found / if financially viable

[3] Not mentioned in manifesto so we expect existing policies will continue where they chime with the spirit of the manifesto, e.g. continuing rollout of more onstreet storage; continuing existing Council speed limit reduction plans, etc

[4] Conservatives argue for high quality cycle schemes, but there is no commitment to funding levels. They promise to work on the backlog of non Spaces for People schemes, but avoiding schemes which “clog up roads, reduce access or pander to minority lobby groups.” Most Spaces for People schemes will be removed.

[5] LibDems do not specifically mention main road cycle infrastructure, but want “high quality” projects “sensitive to local concerns”. However, no funding level is given. They will set up “full consultation” on the “most controversial” Spaces for People schemes – presumably with a view to amendment or removal.

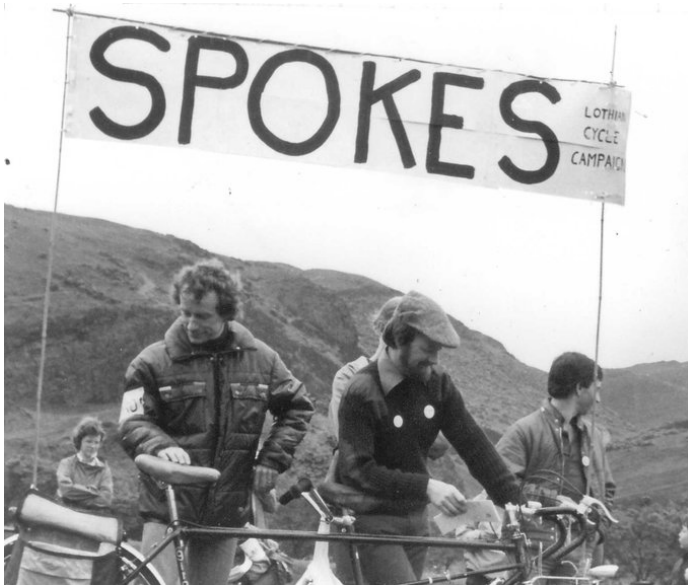
2. Spokes news

2.1 Harry Henniker

Harry was an early Spokes activist, famed for his home-built multi-bike-carrying trailer for weekend-away group rides, and as the [author](#) of *101 Bike Routes in Scotland* and other later bikeroute books.

The first picture shows Harry at a 1978 Spokes protest rally, together with MP (and, later, Foreign Secretary) Robin Cook, and Labour Councillor Willie Roe.

Harry, age 80, is now cycling 1100 miles to raise cash for Sustrans. You can support him here--
www.justgiving.com/fundraising/harry-henniker-sustrans



2.2 Old edition Edinburgh Spokes maps, free to good homes

We still have a supply of the previous (2016, with 2019 updates) edition. These are free to any community or educational organisation that can make use of them. Obviously they are not for resale, and we hope they will go to people who cannot easily afford one or would not otherwise buy one, or for educational purposes.

Already we have donated to Bikes for Refugees, to a community library and an educational establishment. We have a [factsheet showing potential uses in schools](#).

If you are involved in or know of a relevant organisation, please email office@spokes.org.uk saying how many copies you could use, and how. As we are all volunteers, please contact relevant organisations yourself in the first place, to be sure that they would potentially use the maps, and how many, before emailing us.

2.3 Website updates

To give an idea of the kind of things [Spokes Planning Group](#) gets up to, see the recent documents below. Find more via our [consultations page](#). **Planning Group welcomes new volunteers to help with such submissions, for both local and national developments.**

- **Government consultations** – See [here](#) for our responses to the recent government consultations on..
 - [para 2111] [NPF4 National Planning Framework](#)
 - [para 2112] [Pavement Parking draft regulations](#)
 - [para 2201 STPR2] [Strategic Transport Projects Review](#)
 - [para 2201 20%] [Draft Route Map to reduce Car-km 20% by 2030](#)
- **Foot of Walk to Dock Street, cyclistroute, Traffic Order TRO/21/22** [[para 2203 here](#)]
- **Newbattle Terrace improvements, TRO/21/31** [[para 2202 here](#)]
- Minutes of Spokes [Planning Group](#), [Resources Group](#)

3. Major Junctions Review

Following the tragic deaths of two cyclists at Kings Rd junction in Portobello, the Council set up a 'Major Junctions Review' to identify the city's most dangerous junctions for cyclists/walkers, and institute remedial measures or complete redesigns. The motion setting up the review was agreed at the [12.11.20 Transport Committee](#). Cllr Claire Miller initially proposed a motion on the Kings Rd junction, but this was then widened by Cllr Macinnes.

"Committee:

1) Notes with great sadness the untimely death of cyclist Heather Stronach, following a collision with a lorry driver at the King's Road junction in Portobello. This is the second fatality of a similar nature at this junction in less than two years.

2) Notes that a full investigation of this incident by Police will inform, as is always the case, what the Council, as the roads authority can and should do to make this junction safer.

3) Requests that senior officers urgently consider how we can achieve significantly improved safety for vulnerable road users at the city's major junctions and which focuses on reducing the risk and likelihood of dangerous, sometimes lethal, conflict between vehicle drivers and other road users."

4) Requests immediate feedback at the January Transport and Environment Committee, in the form of either a short report or a Business Bulletin, outlining key considerations and fast next steps to achieving a safer environment for those most at risk on our roads."

- moved by Councillor Macinnes, seconded by Councillor Doran (approved unanimously)

Delayed short-term measures at Kings Road junction are expected shortly, with more significant changes later, requiring a Traffic Regulation Order, and hopefully a full junction redesign to follow. [article in forthcoming [May Edinburgh Reporter](#)]

Sadly, progress on the full junctions Review has also been slower than we hoped, due, we are told, to staff shortages in active travel. As a result, it has now been put out to consultants [Anturas Consulting](#).

Spokes had already been working on our own list of [46 dangerous junctions](#), ranked according to various [objective criteria](#) and we have now

submitted this to the consultants as a contribution to their work. Our top 20 are shown in the table.

What you can do

- We welcome any comments on the criteria we used or on any other aspects
- If you'd like the review speeded up, contact your (new) councillors after 5th May, mentioning any junctions which particularly affect your own journeys – see page 1 to find your councillors
- Retweet [our tweet](#) about the Major Junctions Review.

Rank	Common Junction Name	Street involved	Score
1	Portobello	Kings Road, Sir Harry Lauder Road, Seafield Road East, Portobello High Street, Inchview Terrace	10
2	Haymarket gyratory	Morrison Street, Dalry Road, Haymarket Terrace, West Maitland Street	10
3	Cameron Toll (west)	Craigmillar Park, Esslemont Road, Liberton Road, Lady Road	10
4	Brunstane A1/A199	Milton Road, Milton Road East, Sir Harry Lauder Road, A1	9
5	West End Junction E-W	Princes Street, Lothian Rd, South Charlotte Street	8
6	Cameron Toll (east)	Lady Road, Dalkeith Road, Peffermill Road, Old Dalkeith Road	8
7	West End Junction N-S	Princes Street, Shandwick Place, Lothian Rd, Queensferry Street, Hope Street	7
8	Crewe Toll Roundabout	Ferry Road, Crewe Road North and South, Telford Road	7
9	Drumbrae Roundabout	Glasgow Road, Drum Brae	7
10	Orchard Brae Roundabout	Orchard Brae, Orchard Road, Craighleith Road, Comely Bank	6
11	Barnton	Queensferry Road, Maybury Road, Whitehouse Road	6
12	Dundee Street slip-road	Dundee street, West Approach Road access	6
13	Tollcross	Earl Grey Street, Lauriston Place, Brougham Street, Home Street	6
14	Picardy Place Gyratory	Leith Walk, Picardy Place, Leith Street, York Place,	5
15	Foot of the Walk	Great Junction Street, Duke Street, Leith Walk, Constitution Street	5
16	Liberton Braefoot	Mayfield Road, Braefoot Terrace, Liberton Brae, Kirk Brae	5
17	Telford "Y"	Queensferry Road, Telford Road, Strachan Road, House O' Hill Avenue	5
18	King's Theatre	Gilmore Place, Tarvit Street, Home Street, Leven Street.	5
19	Bristo Gyratory	Bristo Street, Teviot Place	5
20	Broughton Street Roundabout	Broughton Street, East London Street, London Street, Bellevue	4

4. Bike/Rail – volunteer(s) for station access project??

Under its new public ownership, ScotRail is undertaking various initiatives, one of which is the 18-month secondment of John Lauder, Sustrans Scotland Deputy CEO, to lead a project on enhanced [sustainable access to rail stations](#). The project also links to the Scottish Government's [commitment](#) to reduce car-km by 20% by 2030.

Spokes would like to contribute by producing a report on bike access to, and parking at, all Edinburgh and Lothian rail stations. We are sure many members would be happy to report on their local station, **but our project can only go ahead if there is a small coordinating group, and a group leader. Please get in touch if interested.**

At this stage please do *not* send us details of your local station, as we have no-one to make use of your report yet!

5. For your diary

- ◆ May 5 **Local Council Elections** across Scotland (and UK) ... see pages 1-2 above
- ◆ May 15 **Kiddical Mass** – Hundreds of children expected, cycling from Harrison Park to the Meadows, with full supervision. Part of the [Worldwide Kiddical Mass](#) weekend.
- ◆ May 28 **Critical Mass** – adult version of the above! Families of course welcome. Last Saturday of every month, and now attracting 100-200 people.

6. Data

6.1 Air pollution – find yours!

More than 97% of homes in the UK are in areas exceeding World Health Organisation limits for at least one of three key forms of air pollution – nitrogen dioxide, PM2.5 and PM10 – based on annual data for 2019 (i.e. pre-pandemic). The UK's legal limits are much higher than the WHO limits, yet for nitrogen dioxide most urban areas do not even meet those UK limits. For more background, see [this article](#) from The Guardian 28 April.

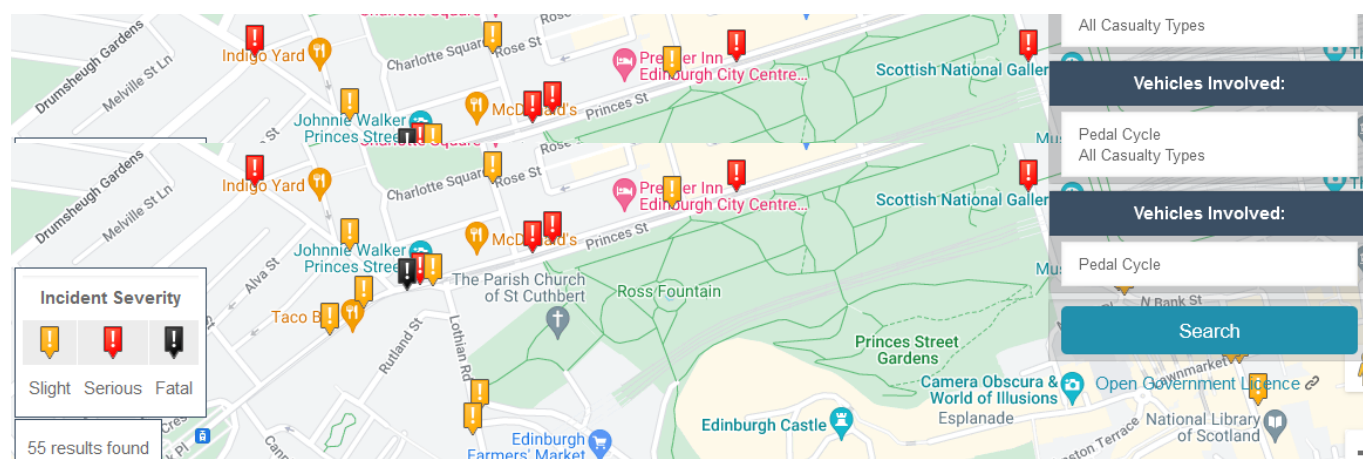
You can find the pollution levels around your house, school or other workplace at addresspollution.org.

The resource is provided by the registered Community Interest Company COPI, who worked in conjunction with Imperial College London. The resource also indicates potential health impacts of the given pollution levels. For more background to the research, click on the 3 horizontal lines at the top right of the above website.

6.2 Open data

Data is collected by many public organisations for many purposes, and increasingly it is being made available to the public, which can be very useful for independent investigators and campaigning organisations. Several sources are listed on our website '[Technical Links](#)' page. They include...

- [Active Travel Open Data](#) Cycling Scotland has put together all the sources of active travel data for Scotland that it could find – currently [83 datasets](#). There is also real-time cycle count data from several Scottish Council areas, including Edinburgh – though several counters did not seem to be operational.
- [Scotland Open Data](#) Over 250 datasets covering many areas of government policy and activity. For example, type *transport* into the search box.
- [Crashmap.co.uk](#) Extensively used by campaigning groups, this site provides a map-based record of police crash statistics over the last 23 years, selectable by type of vehicle, years, injury severity, etc.



7. Edinburgh/Lothians area consultations [see also spokes.org.uk/consultns]

Please respond to any of the consultations below which cover areas where you live, work or visit. If you respond by email, please send us a copy; otherwise please let us know of any main concerns or thoughts which you'd like considered for possible inclusion in official Spokes responses. You could also send your points to your local councillors (section 0 above) and ask them to support you in their own comments.

i. [New Liberton High School and Community Campus](#) – **closing date 3.6.22**

Check out bike access from surrounding residential areas, and bike parking – we've not yet done so. There's also a drop-in on **Weds 4 May, 4.30-6.30pm, at Liberton High School**. Info & comments: newliberton@edinburgh.gov.uk

ii. [Smokey Brae improvements \[Restalrig Road South\]](#) – **closing date 9.5.22**

Smokey Brae links Leith and Restalrig to Meadowbank, London Road and the City Centre, and this scheme aims to improve the road conditions for cyclists or walkers, which are currently very unpleasant. Segregated cycle lanes are included. Spokes strongly supports the scheme, though we will be suggesting quite a few improvements (we unfortunately don't yet have a draft response to pass on).

As well as the online consultation above, plans are on display at **Piershill Library till 9 May, 1pm-7pm**.

We hope you will register your support, but please [*asap*] send Spokes any modifications you'd like us to suggest.

iii. [East Lothian speed limits](#) – **closing date 27.5.22**

East Lothian Council trialled lower speed limits in towns and villages across the County as part of its Covid Spaces for People. It now proposes to make those speed limits permanent, and is consulting. Maps are [here](#).

There are sure to be objections, so please do respond if you support the Council's intentions.

Edinburgh Traffic Regulation Orders - **closing dates as below**

You can find TROs which are being consulted on [here](#). There are two consultation stages..

a. **First stage consultation**, also known as **stakeholder consultation**. This is fairly informal - you can comment but if you say 'object' it has no legal force. The consultation is notified to stakeholder groups such as Spokes, as well as bus, fire, etc. The public are also welcome to comment, but it is up to the council whether to advertise widely or not. At this stage the Council sometimes just publishes the plans, without the accompanying documentation which comes in stage (b) below.

b. **Advertisement stage** also known as **objections stage**. Following the stakeholder consultation the council may choose to modify the plans, or not. The plans must then be widely advertised to the public for comments and objections. Objections are reported to the Transport Committee and certain types of objection, if not withdrawn, have to be referred to the Scottish Government for a final decision.

There are currently a few TROs undergoing these processes, as below. Please comment on all that concern you. Send your comments to TRO.Consultations@edinburgh.gov.uk quoting the TRO reference number below..

Note: It is a good idea to comment ***in support*** if you like a proposal, since this helps to balance objections

[TRO/22/01 Grosvenor Street one-way](#) – **closing date 13.5.22** [This is at stage (a) above]

The Order prohibits motor vehicle entry into Grosvenor Street from Haymarket Junction – a vital safety measure to reduce the dangers for cyclists crossing the tramlines just in advance of Grosvenor Street, where at present cars often cut across you to enter Grosvenor Street. The scheme also benefits the many pedestrians who cross the mouth of the junction, and will now have a shorter crossing point, with motor traffic in one direction only.

If you use this junction, please email the above address in support of this Order – we know that there are people not wanting it to happen. You can of course include any comments you may have on the detail of the Order.

[TRO/22/04 Pipe Lane etc waiting restrictions](#) – **closing date 13.5.22** [This is at stage (a) above]

Do you live in or visit Portobello? The Council is proposing a traffic-reduced link from Fishwives Causeway to the Prom via Pipe Street. As part of this, the above Order is required to restrict parking and loading at certain locations. Please email the above address in support. For more info about the scheme, contact Spokes Party, email spokesparty@gmail.com.

8. More & future consultations – *Check council, government, other consultations*

- ◆ Edinburgh consultationhub.edinburgh.gov.uk
- ◆ Edinburgh [Edinburgh traffic orders](#)
- ◆ East Lothian www.eastlothianconsultations.co.uk
- ◆ Midlothian <https://www.midlothian.gov.uk/directory/33/consultations>
- ◆ West Lothian www.westlothian.gov.uk/consultations
- ◆ Scottish Government consult.gov.scot
- ◆ Transport Scotland www.transport.gov.scot/consultations
- ◆ Scottish Parliament consultations yourviews.parliament.scot/consultation_finder
- ◆ Scottish Parliament petitions parliament.scot/get-involved/petitions
- ◆ Just in case... Transform Scotland keeps an updated page of current transport-related consultations... transformscotland.org.uk/whats-new/action-alerts Check it out in case there's anything important that doesn't appear in the website addresses above (there often is!)

9. Keeping in touch

- ★ Remember to check out our **website** every so often www.spokes.org.uk
- ★ We are active on **Twitter** [@SpokesLothian](#). Follow us and ReTweet tweets that you support. Recent tweets also appear on our website in the right-hand column.
- ★ If you use **Facebook**, please like, share, etc the [Spokes Facebook page](#)
- ★ To campaign effectively Spokes needs as many supporters as possible. If you are not already a member and you like what we do, go to www.spokes.org.uk/membership.