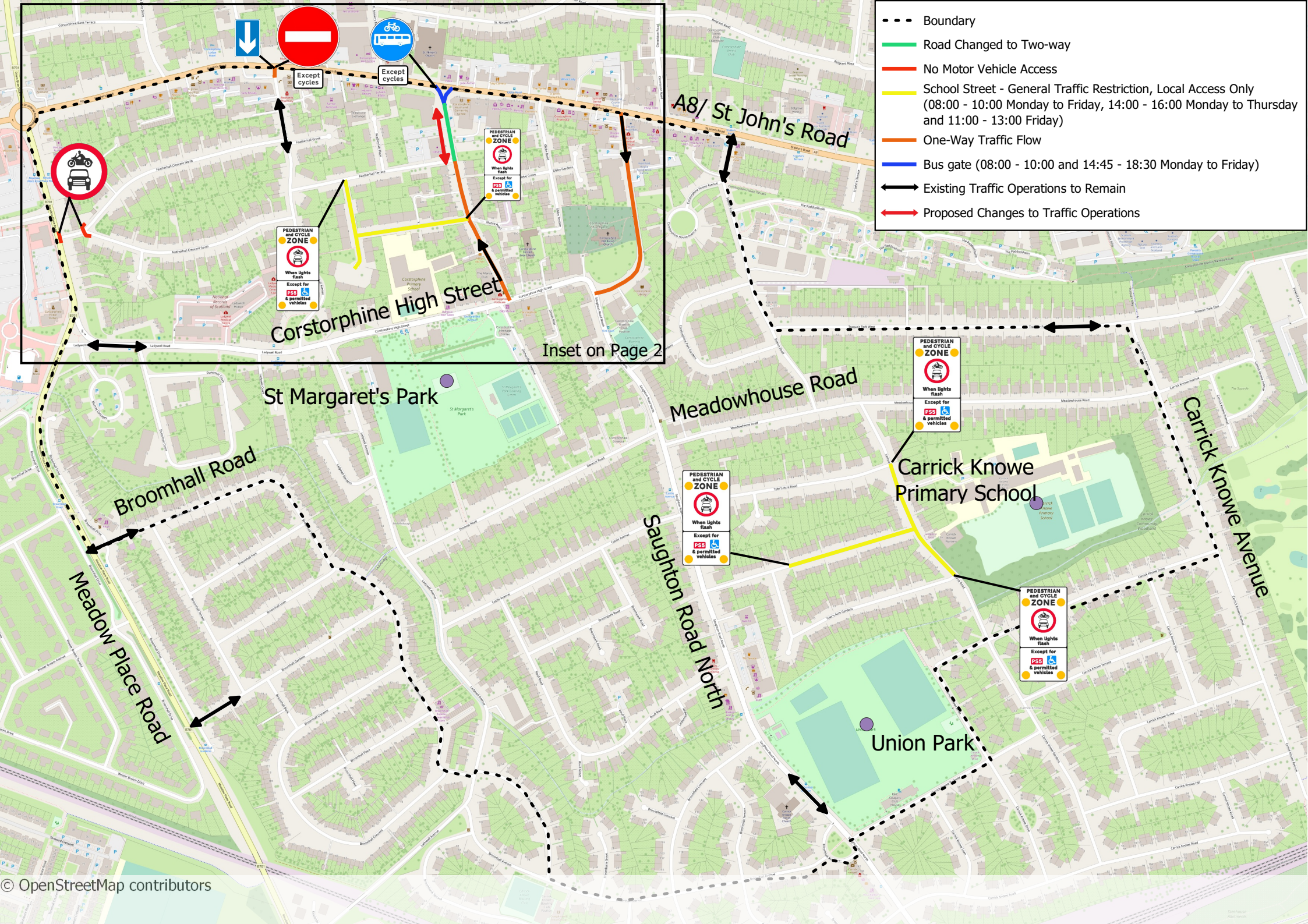


- Boundary
- Road Changed to Two-way
- No Motor Vehicle Access
- School Street - General Traffic Restriction, Local Access Only (08:00 - 10:00 Monday to Friday, 14:00 - 16:00 Monday to Thursday and 11:00 - 13:00 Friday)
- One-Way Traffic Flow
- Bus gate (08:00 - 10:00 and 14:45 - 18:30 Monday to Friday)
- ↔ Existing Traffic Operations to Remain
- ↔ Proposed Changes to Traffic Operations





- Boundary
- Road Changed to Two-way
- No Motor Vehicle Access
- School Street - General Traffic Restriction, Local Access Only (08:00 - 10:00 Monday to Friday, 14:00 - 16:00 Monday to Thursday and 11:00 - 13:00 Friday)
- One-Way Traffic Flow
- Bus gate (08:00 - 10:00 and 14:45 - 18:30 Monday to Friday)
- ↔ Existing Traffic Operations to Remain
- ↔ Proposed Changes to Traffic Operations

