

Spokes Action-Update 07.09.24

spokes.org.uk St Martins Centre, 232 Dalry Road EH11 2JG 0131.313.2114 twitter [@SpokesLothian](https://twitter.com/SpokesLothian)

0. Finding your councillors

In Edinburgh, find your ward & councillors by typing your postcode on [this page](#) [or edinburgh.gov.uk : Council & Committees : Find your Councillor]. Everyone has either 3 or 4 councillors, usually from assorted parties. For any Council, and to find MSPs, you can use writetothem.com.

1. Spokes Summer 2024 comp .. *Don't miss out on the great prizes!*

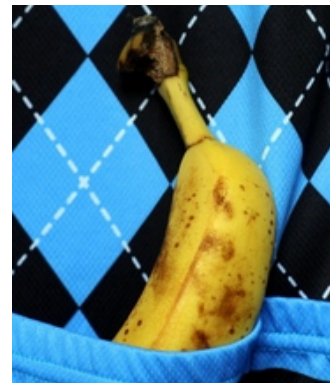
The competition closes midnight, Sunday 15 September.

To maximise your chances, remember that everyone is allowed 2 entries (but not more)

For our big [2024 annual competition](#) we want to hear how *you* connect bikes with food and/or drink, in **whatever way**. You could win a great prize and your ideas or experiences could help other people.

For example, you could write about...

- your favourite recipe/food to take on a recreational ride [[hints](#)]
- transporting food by pedal-power for a food bank [[for example](#)]
- returning with produce and tools from your allotment
- favourite takeaway for a coffee on your cycle to work
- food shopping by bike [[hints](#)]
- a philosophical treatise on the relationship between food & cycling
- absolutely any ideas, practicalities or experiences linking food and bikes



Your entry might be an amusing incident, a simple handy hint, a heartfelt plea, an interesting picture or whatever – as long as it is about cycling and sustenance, we want to hear from you! Factors in judging may include how *useful* your idea is, or how *interesting* or *unusual* your experience. Words alone are fine, even just one superb sentence, but a picture, diagram etc often adds value to an entry.

It's easy to enter - please carefully read the [rules and instructions here](#).

As usual with our competitions, all or most entries will appear on our website (prizewinners normally named, other entries anonymous) and hopefully will give other people useful ideas (or a laugh!)

Most years about half of all entrants get either a prize or a runner-up map or buff!!

PRIZES ... Top winner chooses first, then 2nd place prizewinner, and so on

- [ScotRail](#) Return ticket for 2 adults & up to 4 kids (age 5-15) between any 2 ScotRail stations
- [Spokes](#) £1000 voucher* towards purchase of a cargo-bike
- [Spokes](#) £200 voucher* towards purchase of an e-bike
- [Spokes](#) Full set of 4 Spokes maps plus Spokes Edinburgh buff**
- [Cameo Picturehouse](#) – 2 tickets
- [Far From the Madding Crowd bookshop \(Linlithgow\)](#) – [The Cycling Chef on the Go](#) by [Alan Murchison](#)
- [Lanterne Rouge](#) (cyclists' favourite cafe, in Gifford) £20 voucher
- [Dowerhouse](#) or [Rosebean Cafe](#) £25 voucher valid at either cafe
- [Edinburgh BikeCoop](#) £50 voucher
- [Edinburgh Festival of Cycling](#) One day free hire of the EdFoC Urban Arrow cargobike
- [Laidback Bikes](#) Electric or manual recumbent tour, solo or guided to Cramond *OR* 1-day cargo bike hire
- [Hart's Cyclery](#) One-week hire of an e-bike
- [Camera Obscura & World of Illusions](#) – Family ticket
- [Sustrans online shop](#) £20 voucher [*to be confirmed*]
- [Spokes](#) 10 runners-up will each win 1 map or buff**

* This voucher may only be used for the purpose stated. It may only be used by the winner and is not transferable. It must be used at an Edinburgh or Lothians independent bike shop, not one of the big national chains. We may pay the shop direct.

** Your buff will show a section of our Edinburgh map (Midlothian buffs are sold out)

2. Bus lane success

In our [previous Action-Update](#) we asked members to email your councillors about the official recommendation to allow private hire cars into bus lanes. **Thanks if you emailed!!** At its meeting on 15 August The Transport Committee turned down the proposal!

As we hoped, the Committee also voted to go ahead with an experiment to make the Balerno-Musselburgh bus corridor 7-7-7 (ie. 7am-7pm, 7 days a week) instead of the current weekday peak hours -only. Taxis will continue to use the lanes as at present, but PHCs will not be allowed. [Labour, Green, SNP and Lib Dems all supported this](#), with only the Conservatives voting against.

If the experiment succeeds, we expect all Edinburgh bus lanes will then be made 7-7-7. Bus priority is vital to the Council's 2030 traffic-reduction targets – and, of course, bus lanes are also valuable as a traffic-reduced area for cycling, on roads where there is not segregated cycling provision.

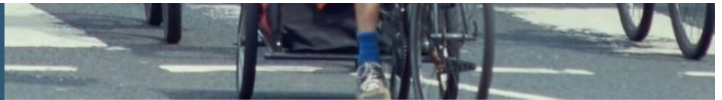
3. Dates for your diary

- Events marked * will have a **Spokes stall** – please volunteer to help! Or come and say hello anyway!
- Also, there are many **current consultations**, each with their own **closing date** – see sections 5 & 6 below.

Apr 27 – Sep 22 [Cycling in Edinburgh exhibition](#) at Museum of Edinburgh, Royal Mile

Spokes has participated in designing the exhibition, along with [Critical Mass](#), [Infrasisters](#) and [Bike Buses](#). [Spokes maps](#) and [buffs](#) will, hopefully, be on sale in the museum shop, and our [summer bulletin](#) available to pick up.

Pedal Power: Cycling and Activism in Edinburgh





This exhibition has been created by groups in Edinburgh who are campaigning to make our city a safe place for cycling.

You'll hear about group rides for fun and friendship that also carry a serious message about the importance of safe cycle routes. You'll learn about the positive environmental impact cycling can have and how it can help both individual and community wellbeing. You'll find out about activism in Edinburgh and around the world and learn about the rich history of cycling in Scotland's capital city.

The exhibition has been created in collaboration with Critical Mass, InfraSisters, Spokes and Bike Buses.

Information

 Sat 27 Apr to Sun 22 Sep

 Museum of Edinburgh

Prices:

Free entry

Sept 28 [Edinburgh Critical Mass](#) – monthly ride in the city

Sept 23-29 [Scotland Climate week](#)

Oct 8 [Cycling Scotland annual conference](#) – great speaker lineup (including Scot Gov Transport Cabinet Secretary, and Glasgow's Head of Transport Planning) and a chance to meet other people interested in promoting cycling and walking from around Scotland. There will be a Spokes stall – please volunteer to help if you are there. *The fee is costly, but Spokes can pay for one or two more members if you are actively involved in a working group.*

Oct 12 [provisional] Council Dr Bike & Info Event, with possible Spokes stall. 10am-2pm on CCWEL, Haymarket Terrace in front of the 4 Points by Sheraton Hotel.

Tuesdays & Thursdays [Edinburgh Dawn Patrol](#) Markus Stitz, founder of [BikePacking Scotland](#), has started a regular early-morning ride, leaving at 5.40am from the western gate of St Andrews Square, and ending at Wellington Coffee. Rides are likely to be around 20 miles, e.g. a circular route encompassing Musselburgh at the far end.

4. New Transport Convener

Edinburgh's former Transport Convener, [Cllr Scott Arthur](#), a Spokes member, is now the newly elected MP for South West Edinburgh, and so is stepping down as a councillor and therefore also as Transport Convener. He is being replaced by [Councillor Stephen Jenkinson](#), a Labour councillor for Pentland Hills ward.

Whilst we have disagreed with Cllr Arthur on some significant issues, notably his opposition to a Workplace Parking Levy, and the ongoing Braid Estate low traffic area controversy, overall his convenership has been positive for active and sustainable travel, and his consensual chairing of the Committee has led to composite motions incorporating useful ideas from different parties.



New Transport Convener,
Cllr Stephen Jenkinson



Cllr Kayleigh O'Neill 🌱
@KayleighFONeill

I've really enjoyed working with Scott and want to thank him again on the leadership he showed on issues like pavement parking (you may have heard me mention it 🙄) May your journeys to WM have your best seat option -

This was a particularly nice tribute to Scott Arthur from Green councillor Kayleigh O'Neill on twitter...

For the future, we asked the new Convener, Cllr Jenkinson, for a couple of sentences about how he viewed active travel within overall transport and sustainability policies, and he told us...

"Over the last few years much of the focus of the committee has been on developing, enhancing and refining plans and strategies of which active travel and cycling are key components. I see us moving into more of a delivery phase now which is quite exciting. Edinburgh is a congested city; to keep it moving we do need modal shift, we do need to reduce car usage especially in the City Centre, therefore we do need to focus on active travel and mass public transport alternatives if we are going to have a chance of meeting the targets we have set ourselves."

There's an [article on our website](#) about the changeover, with a lot more on the issues and decisions (good and not good) which have come up over the last couple of years, some of which remain as challenges for Cllr Jenkinson..

5. Snippets

5.1 Transport Committee (TEC)

You may be aware that all Transport Committee papers can be found here...

<https://democracy.edinburgh.gov.uk/ieListMeetings.aspx?CommitteeId=136>

Spokes now has a [web page](#) with links to the papers, Spokes notes, and tweet threads for most meetings.

5.2 Active Travel - severe funding cuts

There are major concerns about big Scottish Government active travel cash cuts with, first, an announcement of cuts in the [existing 24/25 budget](#), then, secondly, the contents of the [Programme for Government 24/25](#).

The cuts announcement covered only 'revenue' money, which in terms of active travel is largely money for cycling promotion such as training, maps, work with employers, etc, which get a massive £27m cut.

However the Minister also said there need to be big changes to capital funds, which in active travel terms means infrastructure cash. Councils, including Edinburgh, rely largely on government funding for active travel projects, and **we fear a disastrous impact on project implementation in Edinburgh** during this and next year, if not longer.

Earlier this year, things were looking very positive, with the largest ever [Scottish Government active travel budget](#) (though well below what they had promised). But since the demise of the 'Bute House Agreement' between the SNP and the Greens, things have changed. Much of the AT budget remains unallocated, and may well be cut. Councils have still not received the outcome to their 24/25 active travel capital funding bids – which in the past they would have heard months ago – and we are already a third of the way through the financial year. There is wide expectation that 24/25 funding could be less than 50% of what had been expected.

We hope to find out more and publicise as soon as possible, but meantime if concerned, do contact your MSPs.

5.3 Mobility for disabled people – paid workshops

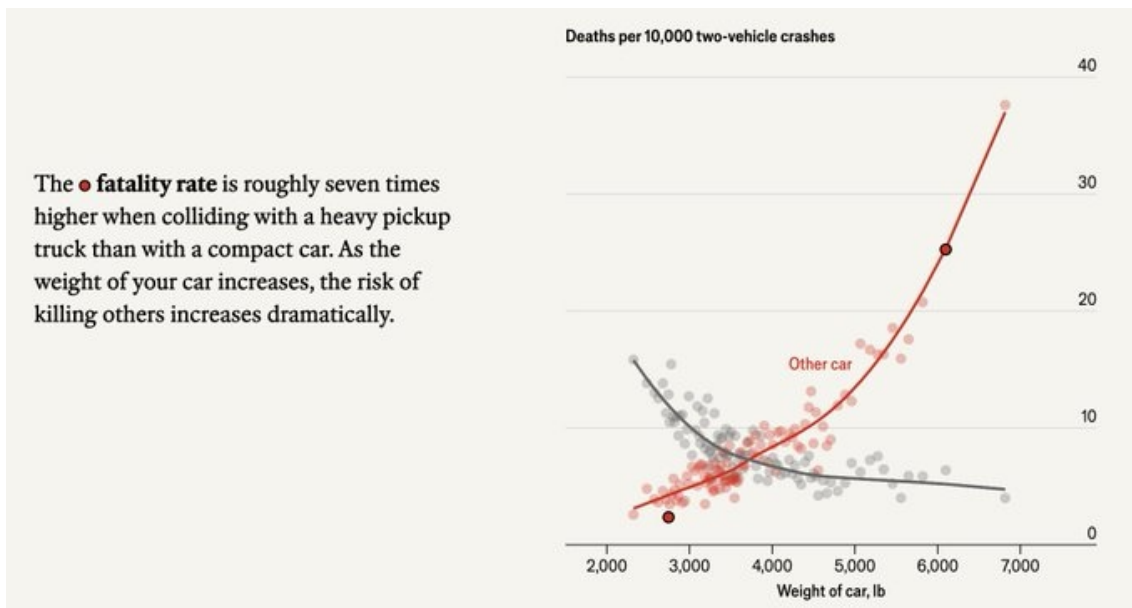
Sustrans and [Transport for All](#) are running some major workshops to discuss getting around in Edinburgh, for which participants will be paid. There are two in-person workshops (£300 will be paid in total) and two online (£180).. If you have experience as a disabled cyclist, this could be particularly valuable. See [here](#) for more info and how to apply.

5.4 “For every life saved, more than a dozen others are lost”

This is the shocking conclusion of an American [investigation by The Economist](#)* into the safety aspects of car bloat – i.e. ever more ever larger vehicles on the roads ([UK](#), [US](#)), resulting in somewhat increased safety for occupants, but greatly increased danger for other people on the roads.

*[NB if you click on the Economist link more than once or twice you may enter a paywall]

The full quote ... "For every life that the heaviest 1% of SUVs and trucks save, more than a dozen lives are lost in other vehicles" is for the heaviest vehicles, but for everyday, not quite so big, vehicles, see text on this chart.



5.5 Bike Bus website

Bike buses, where parents and children cycle to school together on an agreed route, are becoming increasingly common across the UK, and there is now a website [bikebus.org](#) where many are registered. There is also a page specifically about [Edinburgh](#), including a link to the Sustrans guide on setting up a bike bus. For more info and local advice, contact jarlathflynn@hotmail.com.

Corstorphine Bike Bus

Running fortnightly on Fridays from Corstorphine West to Corstorphine Primary School.

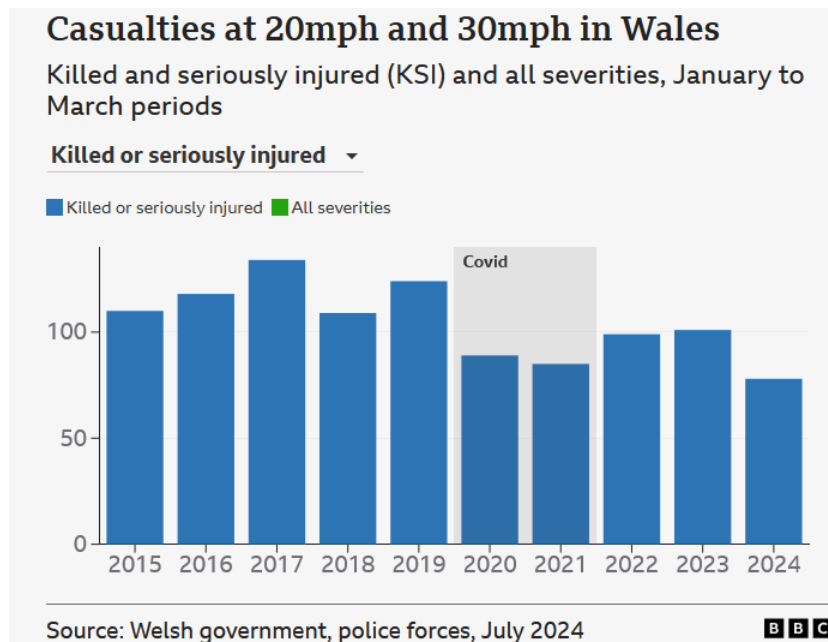


5.6 Wales 20mph successes

Despite the loud outcry about the 20mph default urban speed limit in Wales, introduced in September 2024, the initial results were pretty amazing, as summarised in this article from [Transport Xtra](#).

- 32% drop in casualties
- 20% drop in car insurance claims
- Estimated large savings for the NHS

[More recent data](#) confirms the picture of significantly falling casualties, although due to continuing loud opposition from parts of the public, [some 20mph roads are now likely to revert to 30](#).



6. Please consider volunteering!

6.1 Powerpoint loops

We'd need a volunteer to create some powerpoint loops we could use to run continuously at spokes stalls at conferences or other events. We would first use this for our stall at the Cycling Scotland conference on 8 October.

Our website has a host of pictures that could be used; for example from our [cargobike grant reports](#), our [competition entries](#), or our [history page](#). Each loop, or each section, could consist of just an opening and closing text slide, sandwiching a set of relevant photos.

It would be necessary to resize some photos to avoid creating uncomfortably space-hungry powerpoint files, so we are looking for someone reasonably proficient with at least the basics.

6.2 Spokes Working Groups

Most Spokes activity happens through working groups which meet roughly monthly online. The two most central groups, **Planning** and **Resources**, have both lost a couple of regular members during the last year or so. This has a clear detrimental effect on Spokes activity: for example we can't respond to all relevant council and other consultations (see [here](#)); and we can't always organise stalls at community events.

Please do get in touch if you'd like to try joining Planning or Resources. Both have well-used email lists to keep in touch with ongoing issues between meetings. At meetings, don't be shy to butt in with your thoughts or asking anything that is unclear; groups are friendly and everyone starts by not really knowing what is going on!

Don't feel you don't know enough – it is by doing that you learn - and you would normally share with other members of the group. For example, on responding to a consultation in Planning Group, someone might draw up initial ideas, others could then comment and perhaps add useful references, leading to a final complete response.

6.3 Use your initiative!

Some enterprising Spokes members in Haddington organise a monthly “Free Dutch apple cake” event, from 9.30-10.00am on the first Saturday of each month, in the town centre (Court Street) – with free cake if you arrive by bike. It’s known by locals and has got coverage in the local newspaper and social media. A great opportunity to meet like-minded people and attract others.



If you are interested in organising something similar in your local town centre (in Edinburgh or the Lothians) get in touch, and we will email all members in your area to see if any would like to join you.

Meanwhile, if you are in Haddington on the first Saturday of the month, you know where to go!!

Please respond as an individual to all consultations that concern you. Also copy to Spokes for our central response.

7. Edinburgh Consultations

7.1 Spaces For People bike lanes – **East area ETRO/21/28A ends 28.10.24, others end later**

The Spaces for People bike lanes and traffic restrictions are still legally valid under temporary Orders. In order to make them legally permanent (with any changes) the Council is introducing Experimental Traffic Orders, which include powers to deem them permanent (with or without changes) after a 6-month consultation period.

Unfortunately the **first attempt** (via consultants) to do this, in Jan 2023, failed because of a series of errors which meant that the draft Orders had to be withdrawn. Council officers are now drafting **the Orders** themselves. This is apparently quite complex, and time-consuming. They are now being published successively this Spring, numbered as shown, and in the order below. You can find more of the history [here](#).

It is likely that many of the schemes will be retained largely as they are now, but with gradual improvements over the next few years, notably by replacing defenders with the low-cost dividers pictured in 4.7 above, and with improvements at junctions. *It would be really valuable for members to request such changes, either in general terms, or by commenting in detail on the basis of your local knowledge of particular schemes.*

- City Centre [ETRO/21/26A](#) – Consultation now ended. Spokes submission [here](#).
- East [ETRO/21/28A](#) – open for comment, ends 28.10.24.
- West [ETRO/21/30A](#) & [ETRO/21/30B](#) – open for comment, ends 16.12.24.
- North [ETRO/21/27A](#) & [ETRO/23/23](#) – open for comment, ends 23.12.24.
- South [ETRO/21/29](#) – still to be published, [here](#)

Comments should be sent, by closing dates, to: TRO.Consultations@edinburgh.gov.uk quoting the relevant ETRO reference number(s) as above.

If you comment, please copy Spokes so we can consider including your points in the Spokes submission. We have not yet drawn up draft responses, but you can see our comments when the schemes were being installed [here](#) – they were done scheme by scheme, and only subsequently did the Council group them into 5 groups as above.

Latest: Because of the complexity of the above, the Council has created a new webpage covering all the schemes, with clearer maps, and the opportunity to comment more easily on any of the schemes. The address is.. <https://travellingsafely.commonplace.is/> Of course, Spokes is also keen to get your views so we can consider them for the main Spokes response, so please copy your comments to us, as far as possible.

7.2 New primary schools – Gilmerton & Waterfront – **ends 3 October**

You may have comments on local, bike access routes, and bike parking and storage. Here are the consultation pages: [Gilmerton Station Road](#) / [Granton Waterfront](#)

8. Lothians Councils Consultations

8.1 Midlothian, Local Development Plan (MLDP 2) – **ends 1 October 2024** [Consultation page](#)

“Do you have views on where buildings should be allowed, how land should be used and where existing spaces and buildings should be protected? If yes, fill in the questionnaires”

Note that this includes land that you think should be safeguarded for active travel, other transport purposes or other purposes including recreation. *“Climate change will be a central consideration.”*

8.2 West Lothian Council - enquiries re new road & path developments – **no closing date**

The Council has a [webpage](#) for enquiries and comments about new roads, footpaths, and cycle routes; and also [a page](#) of current projects and completed consultations.

8.3 East Lothian Council – none at present

9. More & future consultations – **Check council, government, and other sites**

- ◆ Edinburgh consultationhub.edinburgh.gov.uk
- ◆ Edinburgh [Edinburgh traffic orders](#)
- ◆ East Lothian www.eastlothianconsultations.co.uk
- ◆ Midlothian <https://www.midlothian.gov.uk/directory/33/consultations>
- ◆ West Lothian www.westlothian.gov.uk/consultations
- ◆ Scottish Government consult.gov.scot
- ◆ Transport Scotland www.transport.gov.scot/consultations
- ◆ Scottish Parliament consultations yourviews.parliament.scot/consultation_finder
- ◆ Scottish Parliament petitions petitions.parliament.scot
- ◆ Just in case... Transform Scotland keeps an updated page of current transport-related consultations... transformscotland.org.uk/whats-new/action-alerts Check it out in case there's anything important that doesn't appear in the website addresses above (there often is!)
- ◆ Spokes website We have a page of particularly relevant consultations www.spokes.org.uk/consultns

10. Keeping in touch

- ★ Remember to check out our **website** every so often www.spokes.org.uk
- ★ We are active on **Twitter** [@SpokesLothian](#). Follow us and ReTweet tweets that you support. Recent tweets also appear on our website in the right-hand column.
- ★ If you use **Facebook**, please like, share, etc the [Spokes Facebook page](#)
- ★ To campaign effectively Spokes needs as many supporters as possible. If you are not already a member and you like what we do, go to www.spokes.org.uk/membership.