

# Spokes Action-Update 31.07.25

[spokes.org.uk](https://spokes.org.uk) St Martins Centre, 232 Dalry Road EH11 2JG 0131.313.2114 bluesky: [@spokes.org.uk](https://bsky.app/profile/spokes.org.uk)

## 0. Finding your councillors

In Edinburgh, find your ward & councillors by typing your postcode on [this page](#) [or [edinburgh.gov.uk](https://edinburgh.gov.uk) : Council & Committees : Find your Councillor]. Everyone has either 3 or 4 councillors, usually from assorted parties. For any Council, and to find MSPs, you can use [writetothem.com](https://writetothem.com).

## 1. Future of Princes Street – please act!

Earlier this year, Edinburgh Council consulted on the future of Princes Street and the Waverley Valley.

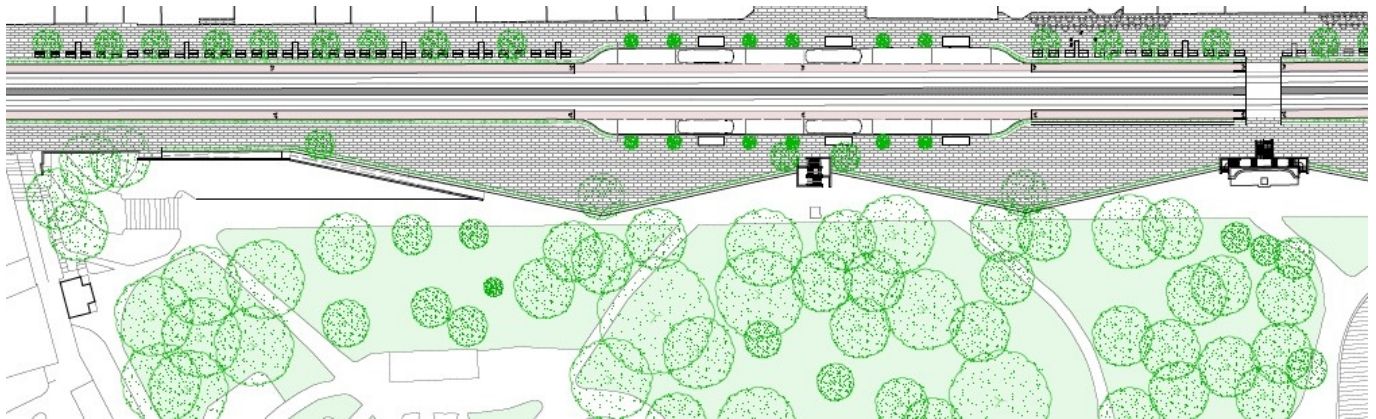
Specifically on Princes Street, the transport proposals were very disappointing – basically, leave everything as it is.

Whilst there was an option for a 2-way cycleroute on the north footway, this was entirely created by removing pedestrian space, and would at certain times entail a lot of conflict with pedestrians where it passed between bus stops and the shops, given the limited width available which is already congested with walkers at busy times. We also know that this option is very likely to be voted down by councillors.

The consultation was heavily criticised by stakeholders including the West End and the New Town community councils, and internationally famous Richard Murphy Architects (RMA), for lack of imagination and ambition. Indeed, remarkably, the Council's consultation document itself said it could have been 'more aspirational.'

RMA proposed a radically different approach, to reduce vehicle-space dominance, greatly increase pedestrian space, and include onstreet largely segregated bike lanes. Bus and tram would share a single lane each way, with bus stop bays to avoid holding up the tram. The space gained by scrapping the other traffic lanes would enable the bike lanes and more pedestrian space. We also know that the Council is undertaking a 'strategic bus review' which may result in fewer buses in Princes Street, which would make the RMA proposals even more practicable.

Subsequently, Spokes met RMA, as a result of which they have published new drawings showing how the cycle lanes would fit their scheme. The lanes would be kerb-separated from the bus/tram lane (except at the bus-stop bays and at pedestrian crossings) and from pedestrians by a narrow planting strip. Overall this would be a huge improvement on the present situation and on the Council 'do nothing to transport' proposals.



The one potential problem is buses crossing the bike lane to enter/leave the bus-stop bays. However, surface colour, priorities lining, trained professional bus drivers *and* the absence of general traffic, mean any risks would be very low. A limited parallel (and with fewer safeguards) already exists in a tramlined street in [Manchester](#).

**There is a detailed article, with much more background, on our website, [here](#).** We are not saying the RMA proposal is perfect, but it shows the kind of ambition which the Council should be looking to and is the best approach we have seen so far to providing well for combined walking, wheeling, cycling, bus and tram.

**Please help us persuade the Council not to waste its money on an interim 'non-aspirational' solution which leaves Princes Street dominated by a huge vehicular space and does nothing for cycling.**

### WHAT YOU CAN DO

- Email [your councillors](#) (each ward has 3 or 4). Ask them to read our article and speak to the Planning and Transport conveners in support. *Please do send us any useful replies.*
- Repost our [bluesky post](#), like our [facebook item](#), and pass the [article link](#) to friends and colleagues.

## 2. Motherload Film + Cargobike discussion Tuesday 2 September

A special Spokes public meeting, discussing further development of cargo bikes in Edinburgh – as always the meeting is open to all.

The evening will include a screening of [MOTHERLOAD](#), a 90-minute documentary film about a new mother's quest to understand the increasing isolation and disconnection of modern life, its planetary impact, and how cargo bikes could be an antidote.

After the film there will be short presentations (5 mins or less each) from several local organisations using cargobikes, including...

- [The Bike Station](#) – continuing the work of former [CargoBikeMovement](#)
- [Porty Community Energy](#) – runs a [cargobike library](#)
- [Banzai](#) [Bruntsfield Area Net Zero Action Initiative] – [cargobike library](#)
- [Cycling Gardeners of Edinburgh](#) – a small business using cargobikes as their main form of transport
- Then a **QA with the speakers panel** – due to the 90-minute film, the QA is likely only to be 30 minutes rather than our usual hour.

### Arrangements..

- **Where** [Augustine United Church](#) 41 George IV Bridge EH1 1EL
- **Date** Tuesday 2 September
- **Time** **Starts 7.15, Ends 9.30. Doors open 6.30 for coffee, stalls, chat.** **NOTE:** the meeting begins (and doors open) 15 mins earlier than our usual 7.30/6.45 times to allow QA time after the film
- **Membership** - special stall to join Spokes or renew your membership
- **Questions** Questions can be emailed (at least a day in advance) to [spokes@spokes.org.uk](mailto:spokes@spokes.org.uk). However, questions in person from audience members are likely to have greatest priority on the night
- **Online** We hope to live broadcast on our [youtube channel](#) – and make the recording available a few days later. **NOTE:** for licensing reasons, the livestream and recording will *not* include the film
- **Social media** If posting about the meeting, use hashtag #SpokesMtg
- **More info** email [imaxwell@gn.apc.org](mailto:imaxwell@gn.apc.org) or phone Ian 07887 500667

*Please help publicise the meeting..*

- [website article](#) (please pass on to friends & colleagues)
- [bluesky](#) (please repost)
- [facebook](#) (please like)



## 3. Dates for your diary

**Aug 30** [Edinburgh Critical Mass ride](#) Start 2pm Middle Meadow Walk

**Sept 2** **Spokes Public Meeting** – screening of Motherload film – see 2 above

**Sept 7** **Spokes summer competition closes** – see 4 below

**Sept 10** [Cycling Scotland annual conference](#) – a Spokes stall is booked

**Also** There are **current consultations**, each with their own **closing date** – see sections 7-9 below.

### REGULAR EVENTS

**Mondays 12-2.30pm** Adult Bike Club easy rides, from Bridgend Farmhouse. Contact [nelly@elgt.org.uk](mailto:nelly@elgt.org.uk) to book.

**Tuesdays 5-6.15pm** UK cycle campaigners '[Active Travel Cafe](#)' via zoom. News, speakers & discussion

**Tuesdays & Thursdays** [Edinburgh Dawn Patrol](#) Markus Stitz, founder of [BikePacking Scotland](#), runs regular early-morning rides, leaving at 5.40am from the western gate of St Andrew Square, and ending at Wellington Coffee. Rides likely to be around 20 miles, e.g. a circular route encompassing Musselburgh at the far end.

**Wednesdays 3pm-9pm** [Bike Kitchen](#) Fix your bike with help from qualified volunteers at [Edinburgh Tool Library](#)

**Thursdays 5-8pm** [Bike DIY repair](#) at the Wee Spoke Hub [tools and advice provided; book in advance]



## 4. Spokes Competition 2025: My Favourite Bike Ride - **ends 7 Sept**

For our 2025 summer competition we'd like to hear of your favourite local bike ride, in Edinburgh and/or Lothian.

**The closing date is getting nearer!!** Remember, it need not be a long or countryside ride. It could equally be your regular trip to work, school or the shops. What we are most interested in is.. **Why is it your favourite ?**

**Full details, rules & how to enter, are [on our website](#).**

In judging, we will want to know not just the route itself but, most of all, why this ride is so special for you. Hopefully your entry will entice or inspire other people to get on their bike and try the same or something similar.

So that the competition does not require technical skills, judging will be based on written entries. Your route should be fairly easy to describe, without too many intricate instructions, frequent turnings, etc. Photos and/or a sketch can be included and often help, but are not essential. You can also include electronic mapping if you wish, but this will not be included in the judging.

### PRIZES

**Top prizewinner gets first choice of prizes, and so on till all prizes allocated. Runner-up entries which don't win a prize will get to choose a free Spokes map or buff**

- [Museum of Scottish Railways \(Bo'Ness\)](#) Family annual pass to the extensive museum
- [Bo'Ness & Kinneil Steam Railway](#) Family ticket, return trip
- [Ember Bus](#) [takes 2 bikes] £50 bus tickets credit
- [Edinburgh Bicycle](#) £50 Edinburgh Bicycle voucher
- [Camera Obscura](#) Family ticket
- [Cameo Picturehouse](#) Tickets for 2
- [Laidback Bikes](#) Recumbent tour or cargobike hire
- [Harts Cyclery](#) One-week ebike hire
- [Edinburgh Festival of Cycling](#) Urban Arrow cargobike day hire
- [Lanterne Rouge bike cafe, Gifford](#) £20 voucher + cycling cap
- [Spokes](#) £1000 voucher\* towards cargo-bike purchase
- [Spokes](#) £200 voucher\* towards e-bike purchase
- [Spokes](#) Set of all 4 Spokes maps
- **RUNNER-UP PRIZES** ... [Any Spokes map or Edinburgh buff](#)



*photo from our 2015 Favourite Ride comp*

## 5. West Lothian Spokes Maps

**Our new West Lothian map is now expected out some time in September and will be on sale at £7.50.**

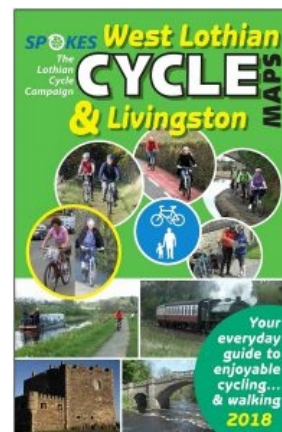
Unfortunately there have been delays getting final details of recent and planned changes by the Councils.

Secondly, we have a considerable stock of the previous (2018) maps (which includes a detailed Livingston streetmap on the back) and would like to make good use of them.

Obviously they are still great for many purposes e.g. we have a [factsheet](#) of how they can be used in schools.

**We are therefore offering any quantity over 5 of the 2018 map at £1 each (+ delivery if we have to post them). If you know any shop, running club, workplace or other that could use them, please send us an order. For schools etc we'd offer them free.**

**We'd also like to trial offering them to local newsagents etc in West Lothian, at £1 each, for them to resell at whatever price they like [obviously the new map will be full price when published]. If you live or work somewhere in West Lothian, we'd really welcome volunteers to try this in your particular town, or more widely.**



## 6. Spokes news & help needed

### 6.1 University / College / Workplace map orders

We have had several bulk map orders from Spokes members at workplaces (e.g. at RBS and Edinburgh University) who have organised a joint order with colleagues, to benefit from our [bulk-order prices](#), e.g. £5 each for 6 or more of the new Edinburgh map, rather than the £7.50 retail price.

**Please consider organising something similar at your workplace, college, church, or even with a group of friends and relations.**

More generally, we'd also like to see if university and college travel coordinator staff might be interested in doing something similar – or at least notifying staff of the opportunity, given that these institutions are now generally very keen to promote non-car commuting by their staff (and students). **If any Spokes member, particularly someone with university/college experience in travel issues, or more general workplace experience, has an interest in taking this on as a mini-project please get in touch.**

We also need help making good use of the remaining stock of existing West Lothian maps (see 5 above).

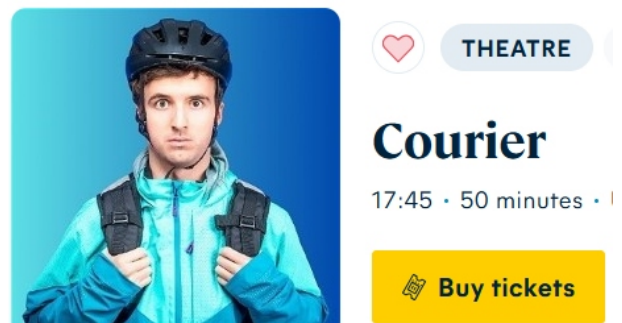
### 6.2 Spokes → SCIO

Spokes is considering becoming a [SCIO](#). If anyone has suggestions for possible trustees, please get in touch.

### 6.3 Festival Fringe cycling-related shows

There are several cycling-related shows in the 2025 Fringe, including this list from [Broadway Baby](#) reviewers.

**If you are going to a bike-related show** could you turn up 20 minutes early and give out copies of our [summer bulletin](#) to people as they arrive or queue? We have often done this in the past and it has always worked well. If you can help, please get in touch and arrange to collect a pile of bulletins (say how many) or we may be able to deliver.



For a wider environmental view, FOE Scotland has brought out [this list](#) of recommended climate-related shows.

### 6.4 Spokes Bulletin – bike leafletting

We now only have one (possibly two) printed Bulletins a year – they are particularly valuable for bike leafletting and for having in bike shops, libraries, etc. The content of the current bulletin ([no.139](#)) is designed to be valid for months, and the bulletin is called ‘Summer 2025.’

**We have plenty spare copies which you can use for bike leafletting in your local area at shops, workplaces, etc, or to top up your local library or bike shop if they have run out.** Please contact Spokes if you can help, saying how many you can use.

*Areas already leafleted include:* Waverley, Haymarket; the city centre, Southside, Morningside; and Edinburgh University central areas (not KB or Bioquarter).

### 6.5 Spokes Working Groups – please volunteer

Most Spokes activity happens through working groups which meet roughly monthly online.

*Please do get in touch if you'd like to try joining Planning or Resources, our two most central groups.* Both meet online roughly monthly and have well-used email lists to keep in touch with ongoing issues between meetings. At meetings, don't be shy to butt in with your thoughts or asking anything that is unclear; groups are friendly and everyone starts by not really knowing what is going on!

Don't feel you don't know enough – it is by doing that you learn - and you would normally share with other members. For example, on responding to a [consultation](#) in Planning Group, someone might draw up initial ideas, others could then comment and perhaps add useful references, leading to a final complete response. Or if you are helping at a Resources Group stall at a community event, you'd not be alone.

There are fewer consultations than usual, probably due to summer

## 7. Edinburgh Consultations

### 7.1 Marionville Road – **ends 17 August**

Consultation on a range of active travel improvements, including a protected bike lane on a section of the road, connecting to the recently installed toucan crossing.

[Consultation page](#), with feedback form and contact email.

Note: this will connect to major [Smokey Brae](#) improvements, including protected bike tracks, already consulted on. Depending on the Marionville Road consultation results, the schemes may be implemented at the same time.

## 8. Lothians Councils Consultations

### 8.1 East Lothian – Coastal Change Adaptation Plan – **ends 2 September** [Consultation site](#)

*“Climate change and sea level rise (will affect our coastlines) but by preparing proactively, we can adapt and build resilience into our future plans. East Lothian Council are developing the CCAP to identify risks associated with coastal change and create a long-term plan for adapting and managing our coastline.”*

The consultation does not refer specifically to path or road issues, but you can of course mention this in the open-ended text boxes.

### 8.2 Midlothian – A701 Relief Road and A702 Link Road – **ends 21 August** [Consultation site](#)

This appears to be a repeat of the consultation held in May 2025. The Spokes response was [here](#).

The current consultation includes a **drop-in on Thurs 14 August**, 4-7pm, at Bilston Primary School EH25 9SD. If you cannot attend you are asked to send your views by email, by 21 August, to [A701@wardell-armstrong.com](mailto:A701@wardell-armstrong.com).

### 8.3 Midlothian – Draft Local Transport Strategy – **ends 17 September** [Consultation site](#)

**This is a really important document** which guides how transport will be developed across Midlothian over the next 10 years, 2025-2035. It looks at all types of travel—walking, cycling, public transport, driving, freight, etc.

As well as submitting your own comments, please send thoughts to Spokes in the hope that we will be able to respond to the consultation and take your views into account. If there is a local member who would like to take the lead in preparing a draft Spokes response please do get in touch as our Planning Group has a lot on its plate.

## 9. National Consultations [Scotland & UK, where relevant]

### 9.1 Draft Environment Strategy – **ends 29 September** [Consultation site](#)

*“The [draft Environment Strategy](#) sets out a holistic framework for delivering Scotland’s role in tackling the global crises of nature loss, climate change and pollution. It brings together the Scottish Government’s existing policy response, highlighting the importance of carefully managing synergies and trade-offs. It builds on these existing policies by outlining new priorities and proposals. These focus, in particular, on opportunities for supporting the economic and societal changes needed to help tackle nature loss, climate change and pollution in ways that create wider benefits for Scotland – supporting green jobs and industries, improving people’s health, tackling poverty and promoting social justice.”*

### 9.2 Draft Climate Change Plan – **ends 19 September** [Consultation site](#)

*“The draft Climate Change Plan (CCP) is a strategy document which outlines how the Scottish Government intends to meet emissions reduction targets across all portfolio areas and sectors of the economy.”*



## 10. Snippets

### 10.1 Delivery cargobikes to borrow, rent or buy

David Gardiner of Laidback Bikes has recently obtained three second-hand Bosch-assisted Urban Arrow cargobikes set up for deliveries (not suitable for family travel). These are available for small businesses to rent or buy or possibly, for a good cause or, if hard up, to borrow free.

The one shown has a deck that can carry boxes, with holes for straps and/or bungees. Longer items can overlap front wheel, a feature missing on many rival designs. Also a removable bag to carry smaller items like tools.

To find out more, contact David Gardiner, [laidbackscotland@gmail.com](mailto:laidbackscotland@gmail.com)



### 10.2 Rent a bike at North Edinburgh Arts

North Edinburgh Arts has opened a new bike library allowing locals to rent a bike for up to a week, or an e-bike for a day. An e-trike is also available.

Contact 07493 876130 [Bikes@northedinburgharts.co.uk](mailto:Bikes@northedinburgharts.co.uk)

And it's free to local residents with a [£3 annual membership](#).



### 10.3 UK All-Party Parliamentary Group report on illegal e-bikes on the roads

*"A report from the All-Party Parliamentary Group for Cycling & Walking (APPGCW) warns of a growing safety risk caused by the widespread use of unsafe, illegally modified e-bikes, referred to as "fake e-bikes", purchased through online marketplaces and frequently used in the gig economy.*

*The cross-party report follows a detailed inquiry that took both written and oral evidence from fire services, police, industry bodies, gig economy workers, academics, and regulators. It finds that the UK's lack of regulation and enforcement around e-bike safety is putting lives at risk, particularly among delivery riders operating in low-paid, high-pressure environments."*

To download the report as a PDF, please click [here](#).

There are 2 distinct issues: Illegal behaviour on roads and paths; and fire risks due to unsafe modifications.

Locally, delivery bike issues were discussed at [26.6.25 Transport Committee](#), where the Workers' Observatory submitted these comments to the Committee:

*Document Author Boyan Karabaliev (Policy Coordinator), [boyan@workersobservatory.org](mailto:boyan@workersobservatory.org)*

*Deputation to Transport and Environment Committee Meeting date 26 Jun 2025*

*The Workers' Observatory would like to thank councillors and council officers for engaging with us and for producing this report. We appreciate the inclusion of the Workers' Observatory as a stakeholder and we will be happy to continue facilitating engagement between the local authority and delivery workers.*

*We agree with the view that appropriate cycling infrastructure would improve working conditions of delivery cyclists and reduce conflict with other road users. However, as we stated in our deputation to Full Council on 20 March 2025, the key driver of occasional unsafe behaviour from workers is the immense pressure put on them by delivery platform companies.*

*We recognise the unfortunate lack of powers for local authorities in Scotland to ensure fair working conditions for delivery riders, for whom public space (roads, streets, paths) is the workplace. We request that the report is referred to the Housing, Homelessness, and Fair Work committee, for a further discussion on how the Council can include platform workers in the Fair Work agenda. We ask that the lack of needed powers is raised with COSLA and the Scottish Government.*

Specifically on ebike modifications, Spokes has heard of several employers and housing providers who are banning e-bikes due to fear of fires. Spokes is hoping to work with a local bike shop to arrange e-bike certification which the owner could show to their landlord/employer to try and overcome such problems, at least in individual cases. For more info, contact Ian [imaxwell@gn.apc.org](mailto:imaxwell@gn.apc.org).

#### Unregulated and Unsafe: The Threat of Illegal E-Bikes

How fake e-bikes pose a safety risk and undermine the UK's active travel efforts

June 2025

## 10.4 Edinburgh Walking & Cycling Index 2026 ... it could feature you!

*"Are you passionate about walking, wheeling and cycling in Edinburgh and keen to share your story? We'd love to hear from you. Please [tell us about your experience](#).*

*Did you know that the total annual economic benefit from all trips walked and wheeled in Edinburgh is 180.8 million? Or that in Edinburgh the physical activity benefits of cycling prevent 37 early deaths annually which is valued at £133 million?*

*Read the most recent [Edinburgh Walking and Cycling Index](#) .. you could feature in a future edition!"*



## 10.5 East Lothian Council, cargo-bike/ trailer/ tandem demo & try-out

The Council's Cycle Forum is organising the above at 3.30pm on Fri 29 August in Musselburgh, run by the Council Outdoor Team along with Cycling UK. If interested in attending, contact cycling officer Chris Milne. email [cmilne@eastlothian.gov.uk](mailto:cmilne@eastlothian.gov.uk). The try-out is preceded from 1-3.30 by a Cycle Forum meeting – it is open to all who live or have other interests in East Lothian – again, contact Chris Milne for details.

**11. Small ads** We are happy to post cycling-related small-ads from Spokes members at no charge, though we can't guarantee the date of circulation. Include a photo if possible.

### 11.1 Cargo Bike - Bakfiets Classic Long £2100 [RRP with accessories £3515]

Cargo Bike - Bakfiets Classic Long Matt Granite (not electric) bought new in April 2023. Used for only a few months so is almost new. It comes with rain tent with zips, extension lock and gold standard lock.

We recently moved closer to our son's school, and since he now rides his own bike, we're looking to sell as no longer being used. All paperwork ready and insurance still active.

For more info, WhatsApp us: 07511544802 or email [pad47@cam.ac.uk](mailto:pad47@cam.ac.uk)



### 11.2 Rhode Gear Ultra Shuttle 3, bike carrier



Free to a good home, but the owner says that you could salve your conscience at taking a freebie by making a donation to Spokes or to the [Museum of Scottish Railways](#).

For more info, contact [chris.r.dufeu@gmail.com](mailto:chris.r.dufeu@gmail.com) 01383 669 124.

*Spokes note:* our 2025 competition (4 above) includes a prize of a one-year family pass to the Museum

## 12. Local councils - Active Travel websites

- Edinburgh – [main page: Cycling & Walking page](#) /
- East Lothian - [main page: East Lothian on the move](#) / [AT infrastructure](#) /
- Midlothian – [main page: Walking, cycling, horse riding](#) / [active travel map](#) /
- West Lothian - [Enquiries and comments about new roads, footpaths, cycle routes](#) / [current projects and completed consultations](#).
- SEStran (South East Scotland regional transport partnership) – [People & Place, projects & grants](#) /

## 13. More & future consultations – *Check council, government, and other sites*

- ◆ Edinburgh [consultationhub.edinburgh.gov.uk](https://consultationhub.edinburgh.gov.uk)
- ◆ Edinburgh [Edinburgh traffic orders](#)
- ◆ East Lothian [www.eastlothianconsultations.co.uk](http://www.eastlothianconsultations.co.uk)
- ◆ Midlothian <https://www.midlothian.gov.uk/directory/33/consultations>
- ◆ West Lothian [www.westlothian.gov.uk/consultations](http://www.westlothian.gov.uk/consultations)
- ◆ Scottish Government [consult.gov.scot](https://consult.gov.scot)
- ◆ Transport Scotland [www.transport.gov.scot/consultations](http://www.transport.gov.scot/consultations)
- ◆ Scottish Parliament consultations [yourviews.parliament.scot/consultation\\_finder](https://yourviews.parliament.scot/consultation_finder)
- ◆ Scottish Parliament petitions [petitions.parliament.scot](https://petitions.parliament.scot)
- ◆ Just in case... Transform Scotland keeps an updated page of current transport-related consultations... [transformscotland.org.uk/whats-new/action-alerts](https://transformscotland.org.uk/whats-new/action-alerts) Check it out in case there's anything important that doesn't appear in the website addresses above (there often is!)
- ◆ Spokes website We have a page of particularly relevant consultations [www.spokes.org.uk/consultns](https://www.spokes.org.uk/consultns)

## 14. Keeping in touch

- ★ Remember to check out our **website** every so often [www.spokes.org.uk](https://www.spokes.org.uk)
- ★ We are active on **Bluesky** [@spokes.org.uk](https://bsky.app/profile/spokes.org.uk) Follow us, and repost posts that you support.
- ★ If you use **Facebook**, please like, share, etc the [Spokes Facebook page](#)
- ★ To campaign effectively Spokes needs as many supporters as possible. If you are not already a member and you like what we do, go to [www.spokes.org.uk/membership](https://www.spokes.org.uk/membership).